

ROOF PLANT



ROOF TOP PLANT AREAS

STRONG SOLUTIONS IN ESSENTIAL SPACES

**DURABILITY** - Computer controlled air conditioning will be utilised to cool the air that's into the data hall. As such we need to consider extreme fluctuations in air temperature as well as potential ingress challenges.



PIAZZA



FORCELED



ESCORT

## CONTROL ROOM



## NETWORK OPERATIONS CENTRE (NOC)

### ILLUMINATING PEOPLE

**COMFORT** - Security teams work long hours in these spaces and the right lighting solution needs to be in place to support the comfort of the team. Products designed for low glare and visual comfort are essential and direct/indirect solutions should be considered in order to optimise comfort levels.



DATA HALL



## DATA HALL

### LIGHT AT THE HEART OF THE DATA CENTRE

**RELIABILITY** - The demands that come from the main technical suite are intense and many "off the shelf" solutions may not meet the temperature demands of a server room. Built to withstand up to 50°C heat, this is where our **SPECLINE TA50** comes in.



SPECLINE TA50



OMEGA PRO 2



AQUAFORCE PRO

OFFICE



## OFFICE

### DIVERSE ILLUMINATION FOR MULTIUSE SPACES

**COMFORT** - The office areas are busy spaces that require comfortable and controllable lighting solutions whilst offering open collaborative spaces. These spaces should adhere to BS EN 12464-1:2021, so an intelligent control system may be a valuable addition to these spaces.



IQ BEAM



OMEGA PRO 2



PUNCH

## MEETING ROOM



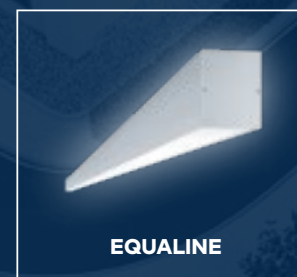
## MEETING ROOM

### LIGHTING THAT ENHANCES INTERACTION

**INTERACTION** - Meeting rooms and offices have become multi-function spaces. These spaces need to be flexible and lighting plays an important part. With that in mind strong horizontal illumination is key in order to enhance facial recognition and therefore interaction.



CETUS



EQUALINE



OMEGA PRO 2

CAR PARK



## CAR PARK

### LIGHTING WHERE SAFETY IS PARAMOUNT

**SAFETY** - Lighting for car parks is essential for public safety. Good colour rendering, a high level of comfortable illumination and a commitment to sustainability and the environment are clear priorities for this space. Aside from safety and visibility concerns, energy efficiency should be considered to minimise site running costs.



## RECEPTION



## ENTRANCE & CIRCULATION AREAS

**CLEAR AND EFFICIENT LIGHTING  
FOR EASY WAYFINDING**

**SAFETY** - At the building entrance, the importance of security increases further. With the facial recognition software utilised in these spaces, cylindrical illumination has never been more important.



CETUS



NOVALINE STYLE



GLACIER

UPS



## UPS & BATTERY ROOM

### RELIABLE LIGHTING ENSURING SAFETY

**ESSENTIAL** - Challenging areas and access to the area for maintenance or emergency purposes requires reliable solutions. The lighting here needs to provide the perfect light levels at the right time to simplify and streamline maintenance processes.



KATONA



AQUAFORCE PRO



COLLEGE



## SECURITY ENTRANCE & PERIMETER AREAS

### LIGHTING WITH ENHANCED SECURITY IN MIND

**ILLUMINATION** - Facial recognition is key for anyone working at the main entrance security gate. Data centre spaces are high security areas so wall mount solutions along with post top illumination helps improve vertical and horizontal illumination.

**SAFETY** - Light illuminates hazards and makes wayfinding easy, keeping people safe and reassured. Higher light levels here help support security teams spot any potential security breaches before people reach the building entrance.



PIAZZA



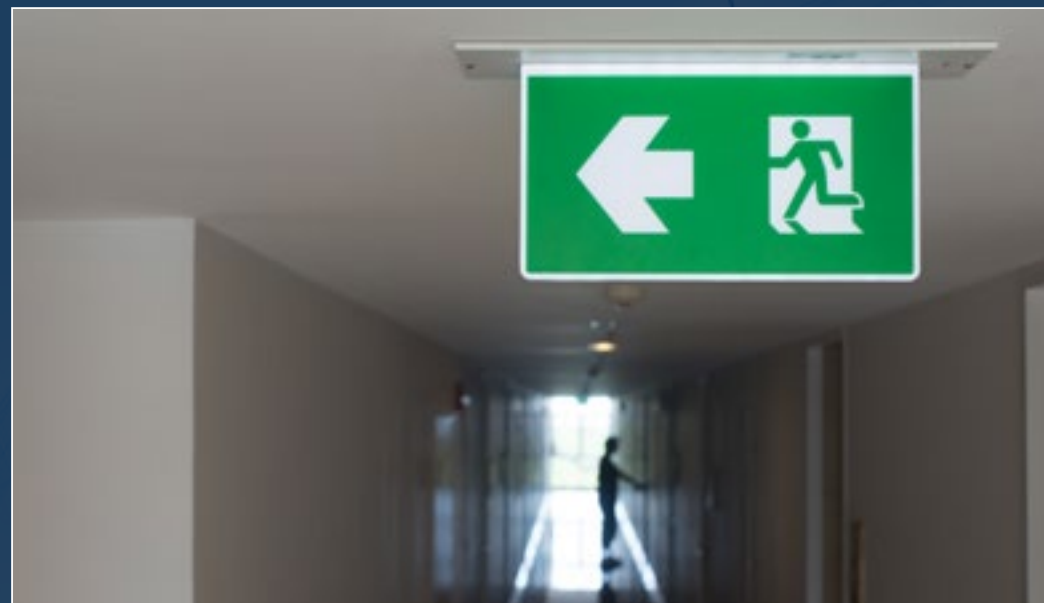
AREAFLUOD PRO



PLURIO

SECURITY & PERIMETER

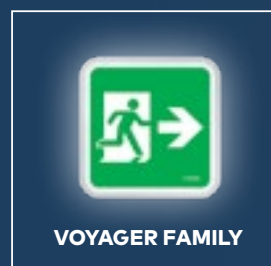




## EMERGENCY

### GUIDING TOWARDS SAFETY

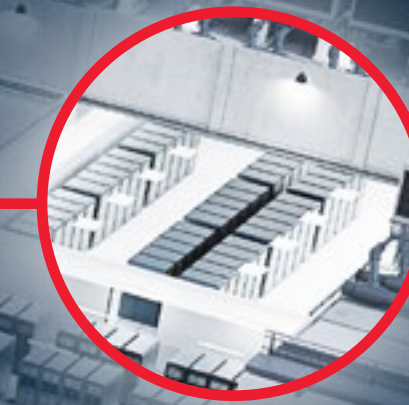
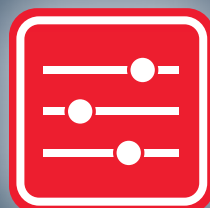
The purpose of emergency lighting is to allow people to make their way safely out of buildings in the event of an emergency. In these situations, we can offer an ingenious solution called Ebox, a sub-distribution station for central supply system including monitoring of LED emergency and escape sign luminaires.





## INTELLIGENT LIGHTING CONTROL

INDOOR OR OUTDOOR,  
SINGLE ROOMS OR  
WHOLE BUILDINGS.  
NO TWO INSTALLATIONS  
ARE THE SAME, SO OUR  
CONTROLS SOLUTIONS  
ADAPT TO YOUR NEEDS.



**INDOOR: FROM INDIVIDUAL ROOMS TO THE WHOLE BUILDING** - Whether it is a small installation or a large building, a central system or a room based solution, via Zumtobel we have controls that adapt to your needs. **DIMLITE** provides the solutions for individual room control systems and **LITECOM** manages smaller to larger spaces up to the whole building, working with any DALI fitting.



**DIMLITE:** control individual rooms.



**LITECOM:** manage from small to large scale spaces.



**MovU lateral or Post top:** External motion sensor with Radio Frequency (RF) and with Master / Slave possibility.



Integrated motion sensor in the luminaire with Radio Frequency (RF) technology and with Master / Slave possibility.

**OUTDOOR: GROUP CONTROLS** - Groups of luminaires can be controlled using a variety of wired and wireless solutions, which are easy to commission and can enable significant energy savings. Whether using a local control cabinet, power line communication, DALI, DMX or a radio frequency (RF) wireless system, multiple lights can be adjusted together, according to predefined profiles or in response to the presence of people and vehicles.



**basicDIM Wireless:** Control luminaire individually to easily change colour temperature and light intensity (also applicable for outdoor luminaires).

**OUTDOOR: SINGLE LUMINAIRE** - Individual luminaires can be controlled by time switches, photocells and motion detectors, for reliable savings with minimal effort. Thorn's **bi-power switch (BPS)** solutions enable dimming to 50% for eight hours at night. Dimming can also be made directly on the product with our **switchDIM** technology to better adjust to users specific needs.



**Bi-power switch (BPS):** requires no external control wiring, and can be easily customised or turned off.



**switchDIM:** Manually dim the light directly at the fitting.

