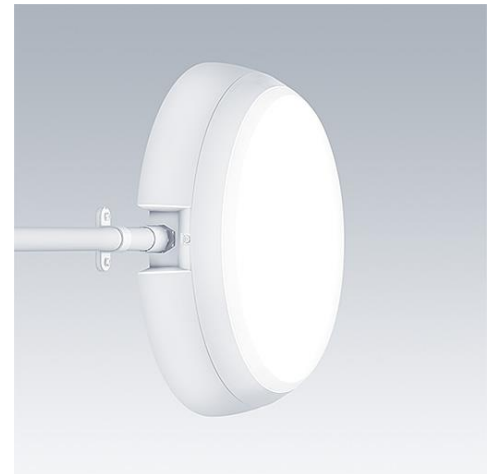


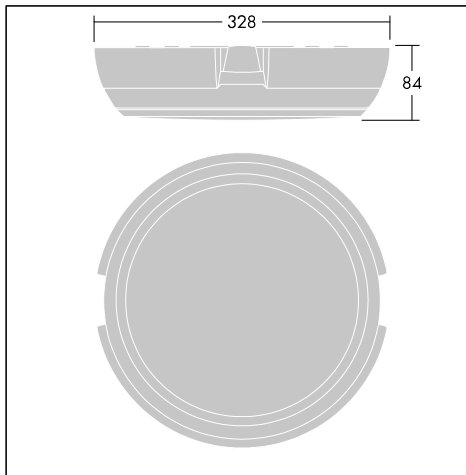
Katona

The primary choice for secondary areas - the perfect problem solver for the contractor

- IP 66 - protection against dust & water, making it an ideal fitting for indoor and outdoor applications
- IK 10 rating resists impacts of up to 20 joules ensuring a high level of protection for public circulation areas
- Clean, smooth aesthetic design reduces dust and dirt accumulation and ensures easy cleaning and lowers maintenance requirements
- Easy installation saving time and money
- Additional options (wired sensor, wired corridor function, E3D emergency and bluetooth sensor options) are available through myProduct
- Self-contained emergency luminaires rely on long-lasting batteries. The high-tech lithium iron phosphate battery used is robust and comes with a three-year guarantee, giving users peace of mind (for further information see respective datasheet).



Photographs, line drawings and photometric data are representative only. For specific product detail please select an individual product.



Material/Finish

Body and bezel: polycarbonate, white
 Diffuser: polycarbonate, white, diffuse
 Screws: steel, zinc plated
 Silicone free

Installation/Mounting

Suitable for installation directly to walls or ceilings, indoors or outdoors. side entry (25mm conduit) for through wiring with entry into 3 way terminal block suitable to accept 2 x 2.5mm. Loop-in, loop-out is possible for cables up to 2.5mm². BESA compatible.

Specification

To specify state:

Functional and well protected luminaire for installation on walls and ceilings, indoors and outdoors (corridors, stairwells, storage rooms, underpasses, terraces, balconies, entrance areas).

Available in a circular design, round (Ø328mm), in a white finish, each with 3 different lumen packages, 900lm, 1200lm and 1400lm, in warm white (3000K) and cool white (4000K), CRI 80. Diffuse lighting distribution, IP66 and IK10 rated, ensuring a high level of protection for e.g. public circulation areas. Efficacy of up to 108lm/W, ambient temperature: -15° to +35° (Emergency versions: 0° to 35°). Lifetime: 50 000 hours L80, Electrical class II. Anti tamper screws as standard. The emergency versions, E3 (3 hours manual test) and E3D (3 hours self/addressable test) come with a Lithium ION Battery with 3 levels of protection and 3 years warranty. Available also with DALI, basicDIM, Microwave Sensor (wired Master/Slave), Bluetooth and mobile apps.

As Thorn Katona

Katona

Ordering Guide

Description	ILCOS Code	Socket	Wt (kg)	SAP Code
Katona Round, side entry				
KAT RD SE 900-840 HF	LED		1,47	96631535
KAT RD SE 1200-840 HF	LED		1,47	96631536
KAT RD SE 1800-840 HF	LED		1,5	96631537
KAT RD SE 900-830 HF	LED		1,47	96632220
KAT RD SE 1200-830 HF	LED		1,47	96632221
KAT RD SE 1800-830 HF	LED		1,5	96632222
Katona Round, side entry, emergency				
KAT RD SE 900-840 HF E3	LED		0,14	96632482
KAT RD SE 1200-840 HF E3	LED		0,14	96632485
KAT RD SE 1800-840 HF E3	LED		0,14	96632488
Katona Round, side entry, dimmable				
KAT RD SE 2200-840 HFI	LED		1,3	96634053
Katona Round, side entry, dimmable, emergency				
KAT RD SE 2200-840 HFI E3	LED		1,45	96634054
Katona Round, side entry, sensor				
KAT RD SE 900-840 MWS	LED		0,046	96632483
KAT RD SE 1200-840 MWS	LED		0,046	96632486
KAT RD SE 1800-840 MWS	LED		0,046	96632489
Katona Round, side entry, sensor, emergency				
KAT RD SE 900-840 MWS E3	LED		0,186	96632484
KAT RD SE 1200-840 MWS E3	LED		0,186	96632487
KAT RD SE 1800-840 MWS E3	LED		0,186	96632490