

Steel Stepped Columns and Accessories

THORN

96632569 FLOOD BRAX2/4 1M STEP COL 3/4/5/6/8M*

Steel Stepped Columns and Accessories

Twin 1000mm floodlighting bracket for stirrup mounting 2 or 4 floodlights

Weight: 9.62 kg (approx)

This bracket is suitable for use with the following columns:

96632725 : 3m stepped column, root mounted, Ø76mm top spigot

96632726 : 3m stepped column, flange mounted, Ø76mm top spigot

96632727 : 4m stepped column, root mounted, Ø76mm top spigot

96632728 : 4m stepped column, flange mounted, Ø76mm top spigot

96632555 : 5m stepped column, root mounted, Ø76mm top spigot

96632556 : 5m stepped column, flange mounted, Ø76mm top spigot

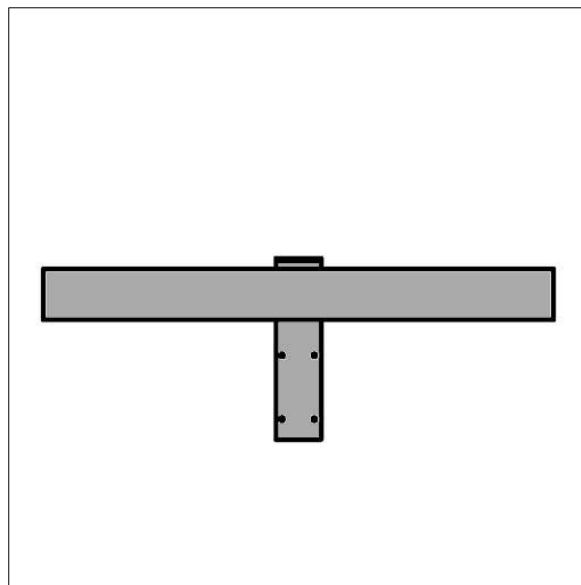
96632557 : 6m stepped column, root mounted, Ø76mm top spigot

96632558 : 6m stepped column, flange mounted, Ø76mm top spigot

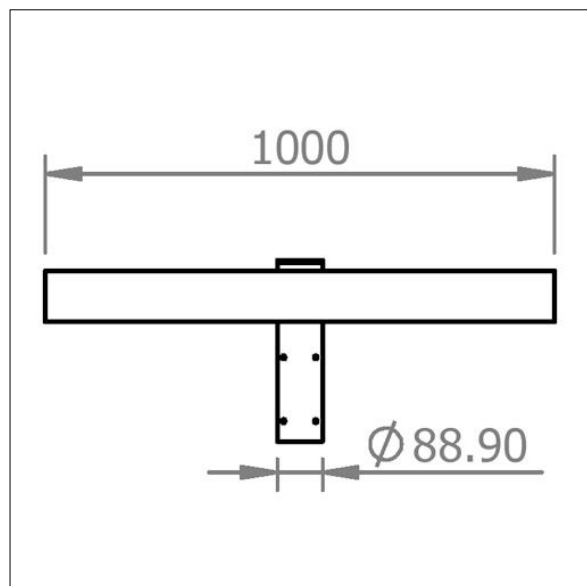
96632559 : 8m stepped column, root mounted, Ø89mm shaft

96632560 : 8m stepped column, flange mounted, Ø89mm shaft

Please note : Delivery charges will apply to this item.



TLG_COLU_F_BRF25.jpg



TLG_COLU_M_BRF25.wmf