

THORN
LIGHTING



ISARO

Optimal, long-lasting efficiency

PERFECTLY OPTIMISED PERFORMANCE

Much more than a high quality optimised lantern, Isaro is a platform allowing a cost-effective, sustainable and customer friendly approach to lighting projects. Through its numerous light distributions and control options, Isaro support cities' long term efficiency and smart lighting strategies. Designed to be easily installed and at the service of long-lasting operation, it's the perfect answer to current and future project needs.



Motorways,
High speed roads,
Major roads



Minor roads &
Residential roads



Intersections



Parking



DARK SKY ACCREDITATION

The International Dark Sky Association is recognised as the global authority on light pollution and is the leading organisation combating this issue worldwide.

The IDA Fixture Seal of Approval is a highly regarded accreditation for manufacturers. The process to achieve this accreditation reviews key features and benefits of a luminaire, its fundamental design and deep dive analysis of photometric data to ensure the product meets strict requirements to limit light pollution.



ISARO

NO COMPROMISE ON PERFORMANCE

Available in two sizes and with latest generation of LED modules, Isaro can reach up to 175 lm/W. With a >90% recycled aluminium body, Isaro is designed to maximize lighting performance and optimise circular economy strategies, while limiting its carbon footprint. Our in-house developed R-PEC system

offers more than 20 light distributions, including pedestrian crossings. Back-light can be reduced using the internal louver option. Combined with a Zhaga socket to create a smart luminaire, Isaro is ready for IoT technology and invest-to-save replacement schemes.



ISARO SMALL
(24-36 LEDs)

FUTURE PROOFED RELIABILITY AND ROBUSTNESS

Highest corrosion protection

Carefully selected die-cast aluminium (EN AC 44300) to give Isaro the highest protection class (Class 5 – very high according to EN ISO 9223) and applications up to seaside where conditions are the harshest.

Maintaining lighting performances matters

The use of a glass cover gives the best optical performance and maintenance factor over time, compared to polycarbonate technology.

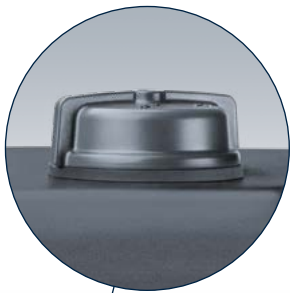
ENEC / ENEC+ certified

Selected electronic components to support long-lasting luminaire operation and interoperability. Equipped with newest generation of outdoor drivers: efficient, reliable and open to connectivity.

EXTREMELY FLEXIBLE AND CONTRACTOR FRIENDLY

With its optimised weight, Isaro is a truly easy to handle lantern. Pre-wired for safe and quick installation. Designed to provide dedicated services for refurbishment, Isaro adapts itself to existing poles, brackets, and cabling configurations.

Multiple options mean you can "build your own" luminaire. Many controls are available including NEMA and Zhaga interface, Bi-Power control, CLO (Constant Lumen Output), etc.



READY TO CONNECT

Both sizes can be configured with a NEMA or Zhaga interface, Zhaga-D4i certified



EASIER ACCESS

Optional butterfly screws provide tool-free access for maintenance

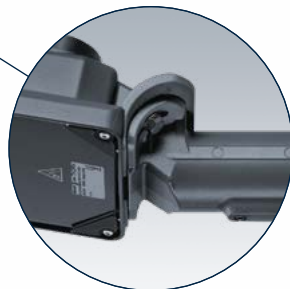
Anthracite

ISARO EXTRA SMALL (12 - 24 LEDs)



R-PEC OPTIC

With more than 20 light distributions, the R-PEC engine features best in class optical performance providing precision, flexibility, achieving wide column spacing, excellent uniformity while limiting waste or obtrusive light

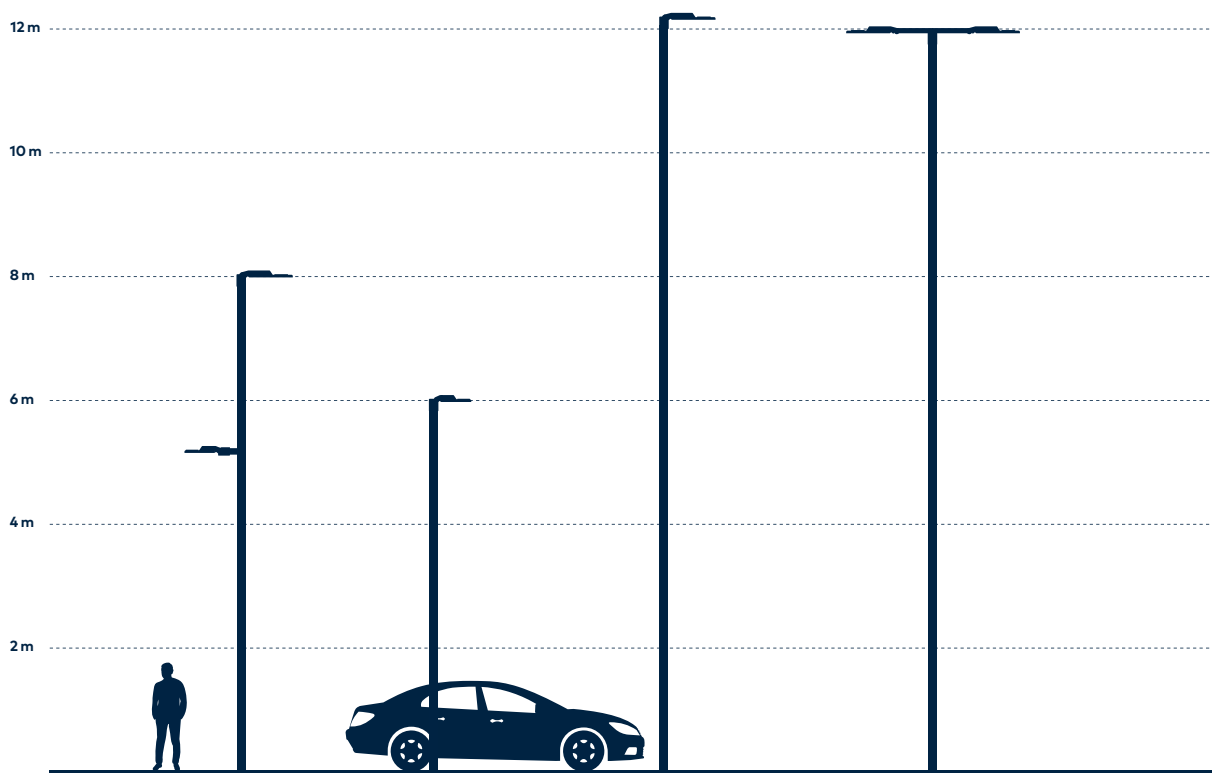


UNIVERSAL SPIGOT

Delivered pre-equipped, Isaro's spigot can be reversed and used as post-top or as a lateral mounted option. Different diameters are available (T60 / T76 / L42 / L60 / L34 with adapter)

INSTALLATION POSSIBILITIES

- Installation up to 15 m in height
- Versatile tilting technology, lateral (-20° / $+20^{\circ}$) and post top (0° / $+20^{\circ}$)
- Adjustable inclination by increments of 5° to optimise lighting distribution and uniformity
- Universal spigot for lateral and post top installation
- As standard: possible coastal application thanks to its C5 corrosion protection class (ISO 9223:2012)
- Pre-wired for ease of installation at any pole height. Option with IP67 quick connector if pole cable is retained (refurbishment)



Please contact your regional pole supplier for more details and to understand the available possibilities for your country.

DISCOVER

ISARO

*IDA fixture seal of approval relates to ≤ 3000K only, clear enclosures, +/- 10° maximum tilt only.
Luminaires must be mounted as photometered.



	SIZE EXTRA SMALL	SIZE SMALL
	12 LEDs / 24 LEDs	24 LEDs / 36 LEDs
	Up to 8000 lm	Up to 17000 lm
	Up to 165 lm/W	Up to 175 lm/W
	2200 K / 2700 K / 3000 K / 4000 K / 5700 K	
CRI	70 / 80	
ULOR	0 %	
	IP66	
	Operating temperature: -35 °C up to 50°C. Not all variants are suitable at high temperature, contact your local sales representative for more information	
	IK08 / IK10 (optional)	
	Housing and spigot corrosion resistant (Class 5 – Very High)	
	UV Resistant glass cover	
	100 000 h L95B10 at Ta 25 °C	
	R-PEC optical system with more than 20 light distributions	
	Post top / Lateral (T60 / T76 / L42 / L60 / L34 with adapter)	
	Texturised light grey (available in 50 RAL)	
	10 kV / 10 kA multi-pulse / 20 kV single pulse	
	DALI dimmable (HFX) / Bi-Power Power Line (BPL) / Constant Light Output (CLO) / Light Reduction Twin Phases (LRT) / Bi-Power (BP) / Zhaga interface Up (ZU) or Down (ZD) / Nema interface (N7)	



