

Technical Information



Design

BSEN40, PD6547: 2004+A1: 2009 (No sign)

Load class B

Deflection class 3

Head load- See Table

Finish Galvanised to BSEN 1461:2022

Welding

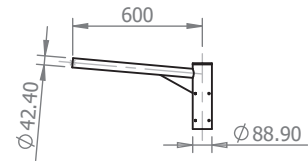
In accordance with BSEN1011

Procedures to BSEN ISO 15614-1:2017

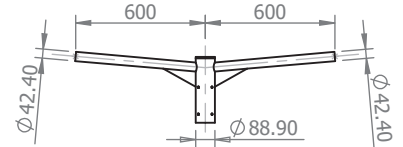
Welders qualified to BSEN ISO 9606-1:2017

* Maximum design head load based on wind loading region with orientation of bracket/ luminaire(s) being on same plane as door

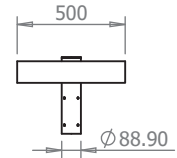
Approximate Column Weight: 34.36kg



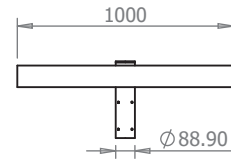
96632566 - Single Arm Bracket
Approx Weight: 5.23kg



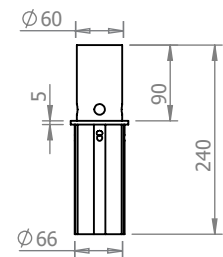
96632567 - Twin Arm Bracket
Approx Weight: 7.36kg



96632568 - Single Flood Light Bracket
Approx Weight: 6.22kg

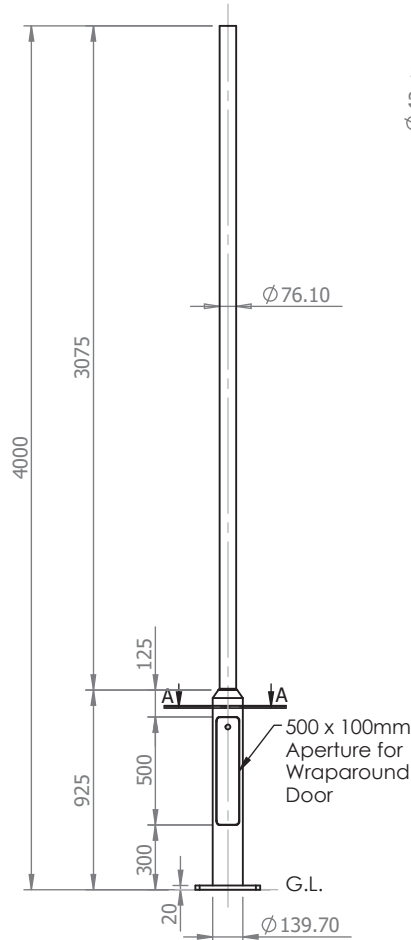


96632569 - Double/Quad Flood Light Bracket
Approx Weight: 9.62kg

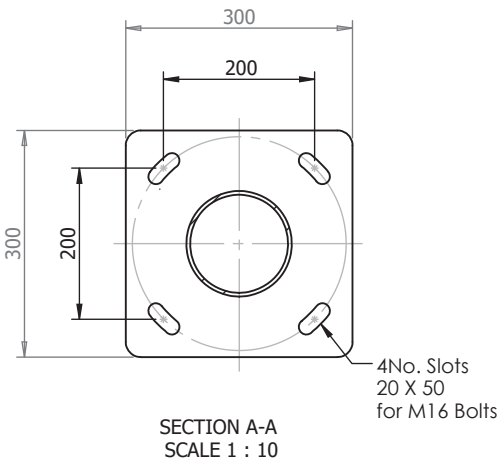


96633563 - 60mm Post Top Adaptor
Approx Weight: 1kg

96632728



Maximum Loading including Bracket		
Wind Loading Region	Terrain Category	Weight/Area
Extra Light	II	95kg/0.87m ²
	III	100kg/0.98m ²
Light	II	80kg/0.77m ²
	III	90kg/0.86m ²
Medium	II	70kg/0.71m ²
	III	85kg/0.99m ²
Heavy	II	65kg/0.65m ²
	III	75kg/0.73m ²
Extra Heavy	II	50kg/0.50m ²
	III	60kg/0.58m ²



THORN

Notes

All dimensions in millimetres unless stated otherwise.

When Multiple views are shown 3rd Angle Projection is assumed.

Title

4 Metre Stepped/Tubular Flange Plated Post Top Column

Drg No. 42198-3

Scale:1:35
Sheet 1 of 1