

Technical Information



Design

BSEN40, PD6547: 2004+A1: 2009 (No sign)

Load class B

Deflection class 3

Head load- See Table

Finish Galvanised to BSEN 1461:2022

Welding

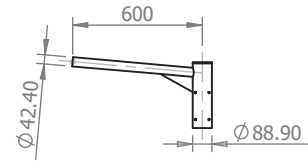
In accordance with BSEN1011

Procedures to BSEN ISO 15614-1:2017

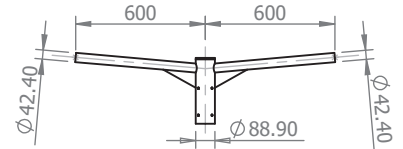
Welders qualified to BSEN ISO 9606-1:2017

\* Maximum design head load based on wind loading region with orientation of bracket/ luminaire(s) being on same plane as door

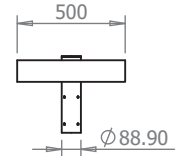
Approximate Column Weight: 29.27kg



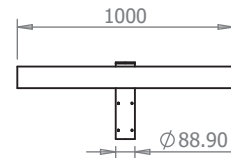
**96632566 - Single Arm Bracket**  
Approx Weight: 5.23kg



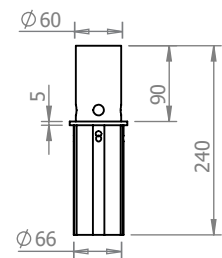
**96632567 - Twin Arm Bracket**  
Approx Weight: 7.36kg



**96632568 - Single Flood Light Bracket**  
Approx Weight: 6.22kg

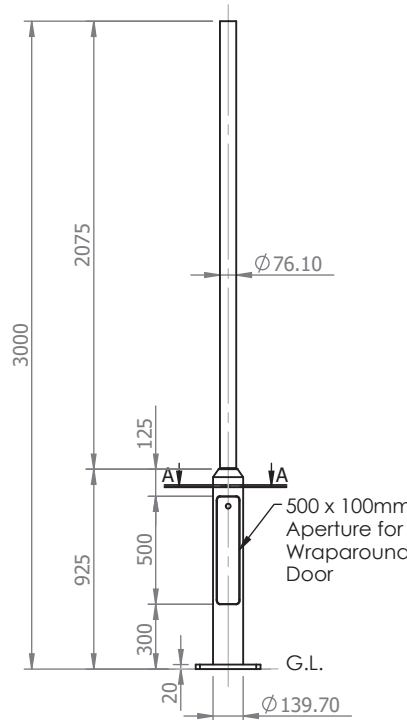


**96632569 - Double/Quad Flood Light Bracket**  
Approx Weight: 9.62kg

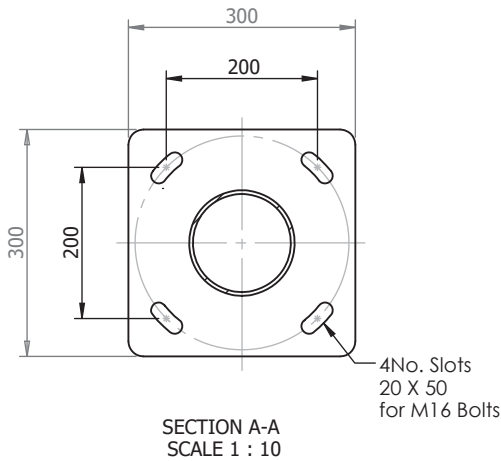


**96633563 - 60mm Post Top Adaptor**  
Approx Weight: 1kg

**96632726**



Maximum Loading including Bracket		
Wind Loading Region	Terrain Category	Weight/Area
Extra Light	II	115kg/1.48m <sup>2</sup>
	III	120kg/1.64m <sup>2</sup>
Light	II	105kg/1.31m <sup>2</sup>
	III	110kg/1.45m <sup>2</sup>
Medium	II	100kg/1.21m <sup>2</sup>
	III	105kg/1.32m <sup>2</sup>
Heavy	II	95kg/1.10m <sup>2</sup>
	III	95kg/1.22m <sup>2</sup>
Extra Heavy	II	85kg/0.90m <sup>2</sup>
	III	112kg/0.97m <sup>2</sup>



**THORN**

Notes

All dimensions in millimetres unless stated otherwise.

When Multiple views are shown 3rd Angle Projection is assumed.

Title

3 Metre Stepped/Tubular Flange Plated Post Top Column

Drg No. 42196-3

Scale: 1:35  
Sheet 1 of 1