

Technical Information



Design

BSEN40, PD6547: 2004+A1: 2009 (No Sign)
 Load Class B
 Deflection Class 3

Head load - See Table

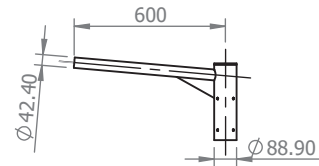
Finish Galvanised to BSEN 1461:2022

Welding

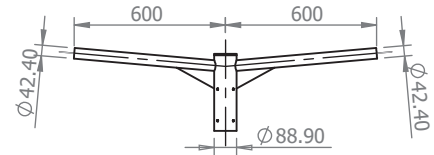
In accordance with BSEN1011
 Procedures to BSEN ISO 15614-1:2017
 Welders qualified to BSEN ISO 9606-1:2017

* Maximum design head load based on wind loading region with orientation of bracket/luminaire(s) being on the same plane as door

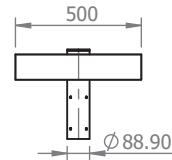
Approximate Column Weight: 30kg



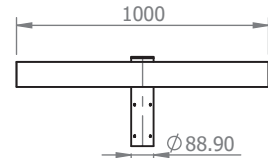
96632716 - Single Arm Bracket
 Approx Weight: 5.23kg



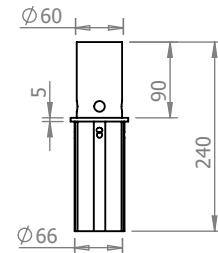
96632717 - Twin Arm Bracket
 Approx Weight: 7.36kg



96632720 - Single Flood Light Bracket
 Approx Weight: 6.22kg

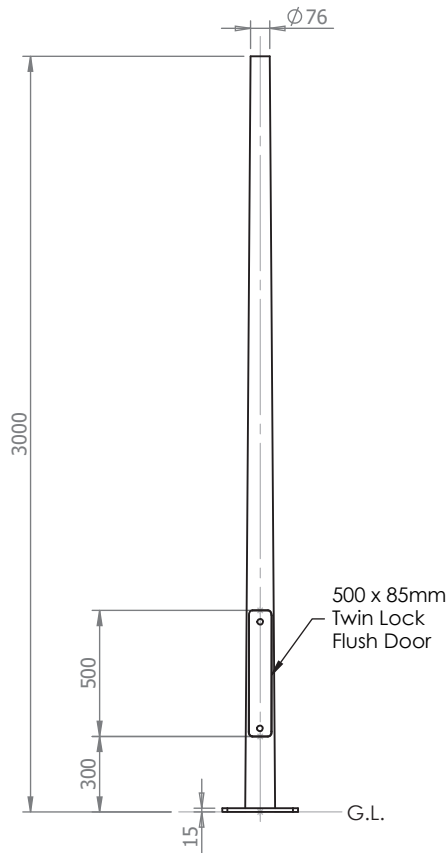


96632721 - Double/Quad Flood Light Bracket
 Approx Weight: 9.62kg

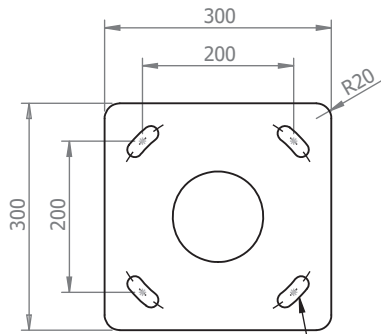


96633562 - 60mm Post Top Adaptor
 Approx Weight: 1kg

96632724



| Maximum Loading Including Bracket | | |
|-----------------------------------|------------------|--------------------------|
| Wind Loading Region | Terrain Category | Weight/Area |
| Extra Light | II | 115kg/0.77m ² |
| | III | 125kg/0.85m ² |
| Light | II | 105kg/0.67m ² |
| | III | 110kg/0.75m ² |
| Medium | II | 95kg/0.62m ² |
| | III | 100kg/0.69m ² |
| Heavy | II | 85kg/0.57m ² |
| | III | 90kg/0.63m ² |
| Extra Heavy | II | 75kg/0.46m ² |
| | III | 80kg/0.51m ² |



Flange Plate
 Scale 1:10
 4No. 20 x 50 slots to suit M16 Fixings

THORN

Notes

All dimensions in millimetres unless stated otherwise.

When Multiple views are shown 3rd Angle Projection is assumed.

Title

3 Metre Tapered/Conical Flange Plated Post Top Column

Drg No. 49355-0

Scale:1:30
 Sheet 1 of 1