

Technical Information

Design

BSEN40, PD6547: 2004+A1: 2009 (No Sign)
 Load Class B
 Deflection Class 3

Head load - See Table

Finish

Galvanised to BSEN 1461:2009 + 1.) External Root

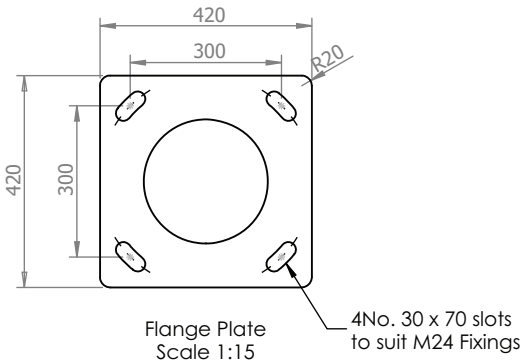
Welding

In accordance with BSEN1011
 Procedures to BSEN ISO 15614-1:2017
 Welders qualified to BSEN ISO 9606-1:2017

* Maximum design head load based on wind loading region with orientation of bracket/luminaire(s) being on the same plane as door

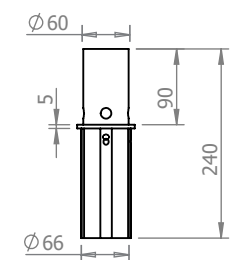
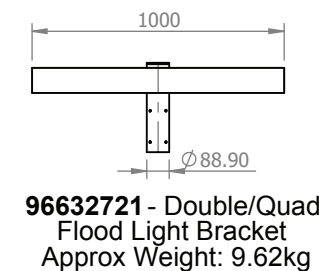
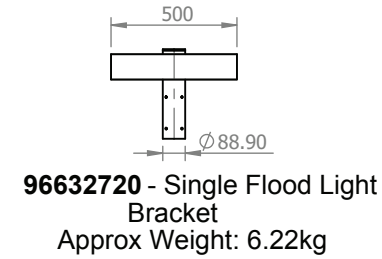
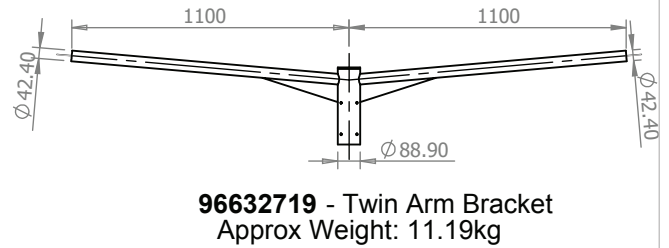
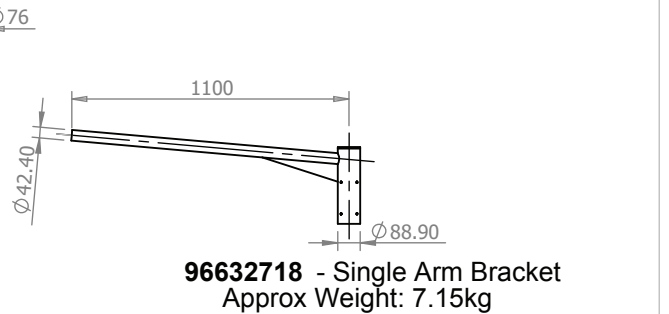
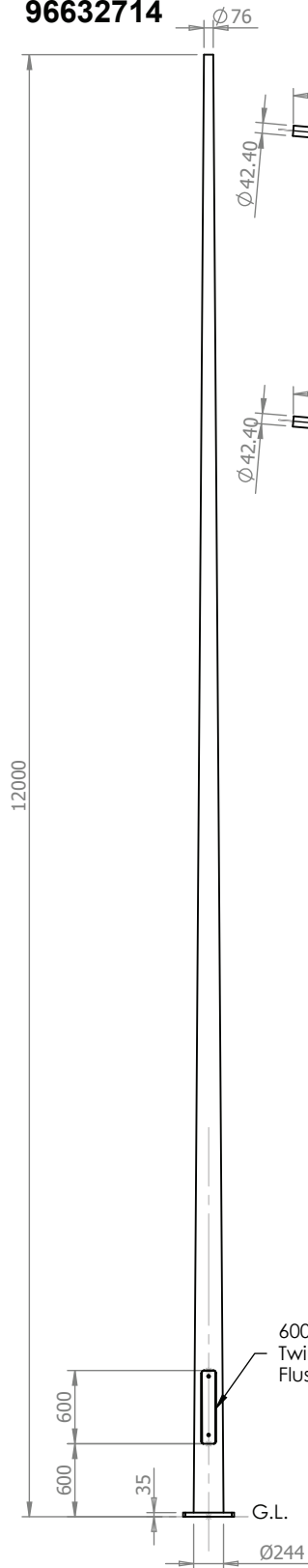
Approximate Column Weight: 331.08kg

Maximum Loading Including Bracket		
Wind Loading Region	Terrain Category	Weight/Area
Extra Light	I	180kg/1.62m ²
	II	205kg/1.9m ²
Light	I	155kg/1.42m ²
	II	180kg/1.67m ²
Medium	I	140kg/1.25m ²
	II	165kg/1.55m ²
Heavy	I	115kg/1.1m ²
	II	150kg/1.42m ²
Extra Heavy	I	85kg/0.79m ²
	II	110kg/1.02m ²



3rd Angle

96632714



THORN
 LIGHTING

Notes
 All dimensions in millimetres unless stated otherwise.
 When Multiple views are shown 3rd Angle Projection is assumed.

Title
 12 Metre Tapered/Conical Flange Plated Post Top Column

Drg No. 36027-3

Scale:1:60
 Sheet 1 of 1