

Technical Information



Design

BSEN40, PD6547: 2004+A1: 2009 (No sign)

Load class B

Deflection class 3

Head load- See Table

Finish

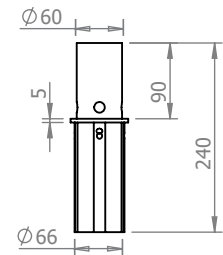
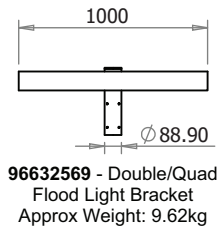
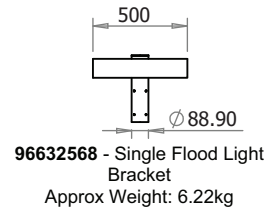
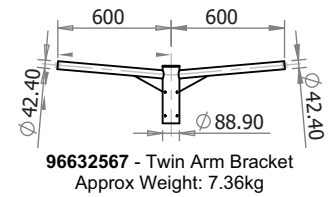
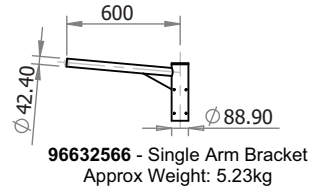
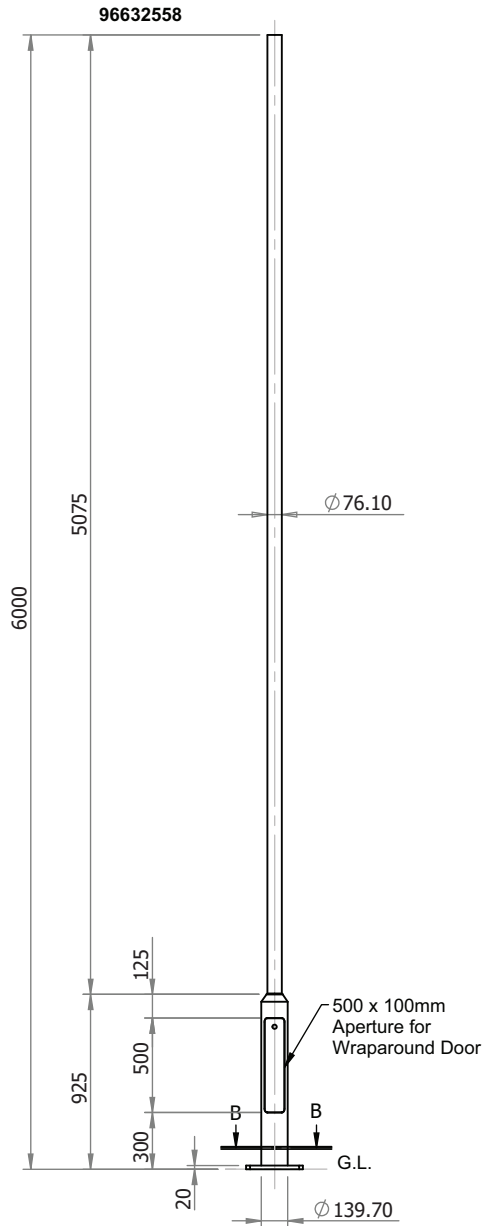
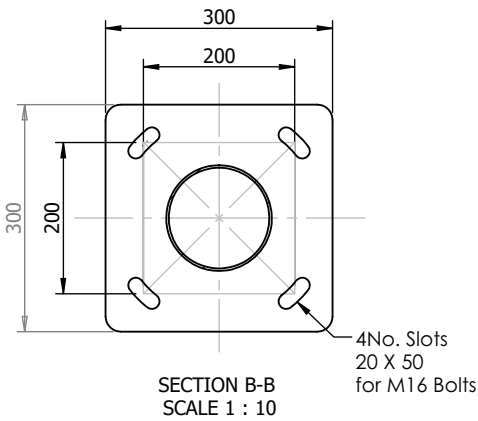
Galvanised to BSEN 1461:2022

Welding

In accordance with BSEN1011  
Procedures to BSEN ISO 15614-1:2017  
Welders qualified to BSEN ISO 9606-1:2017

\* Maximum design head load based on wind loading region with orientation of bracket/ luminaire(s) being on same plane as door Approx Column Weight: 47.53kg

Maximum Loading including Bracket		
Wind Loading Region	Terrain Category	Weight/Area
Extra Light	II	55kg/0.46m <sup>2</sup>
	III	60kg/0.61m <sup>2</sup>
Light	II	40kg/0.40m <sup>2</sup>
	III	60kg/0.51m <sup>2</sup>
Medium	II	38kg/0.36m <sup>2</sup>
	III	50kg/0.47m <sup>2</sup>
Heavy	II	35kg/0.32m <sup>2</sup>
	III	45kg/0.42m <sup>2</sup>
Extra Heavy	II	30kg/0.24m <sup>2</sup>
	III	34kg/0.31m <sup>2</sup>



**THORN**  
LIGHTING


Title

6 Metre Stepped/Tubular Flange Plated Post Top Column

Drg No. 35922-5

Scale:1:40

Sheet 1 of 1

Notes

All dimensions in millimetres unless stated otherwise.

When Multiple views are shown 3rd Angle Projection is assumed.