

PopPack Pro battens and modules

THORN

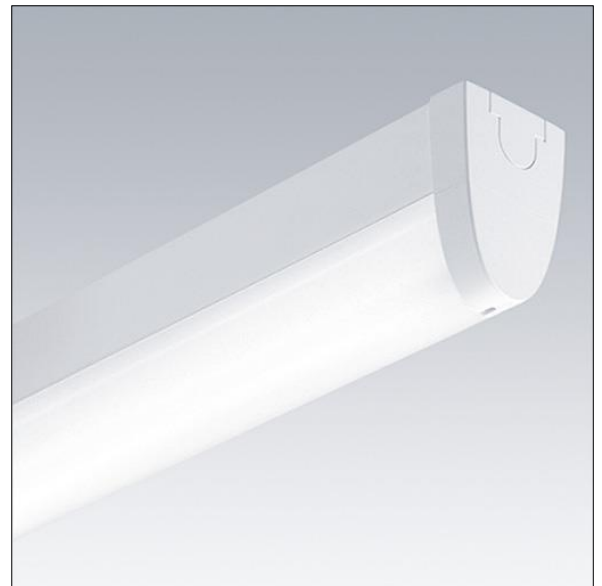
96548078 <POPPACK PRO 1x49W T16 HF OP L840

IP20			650 °C	T _a 25
------	---	---	--------	-------------------

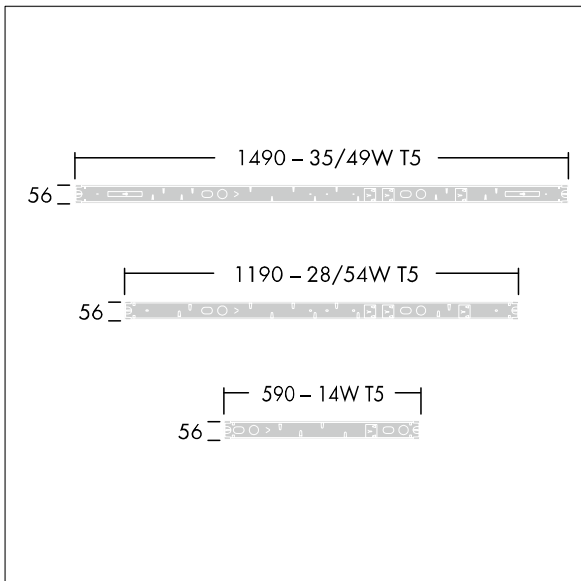
PopPack Pro battens and modules

A classic batten luminaire for 1 x 49W T16 lamp(s) with electronic - fixed output ballast. IP20, Class I electrical. Batten: white, pre-coated rolled form steel. Endcaps/lamp holders: injection moulded white polycarbonate. Mounting plates (FixExpress): injection moulded polycarbonate. 600mm fixing centres. Electrical connection via 7 x 2.5mm² terminal block, all internal wiring is halogen free. Sensor (SaveExpress) and emergency (SafeExpress) modules push fit on either end after the end caps have been removed and are connected with 'one-way' plugs and sockets. All attachments are installed without the need for any tools. Supplied complete with opal acrylic ClipLine diffuser. Complete with 840 lamp(s).

Dimensions: 1490 x 55 x 85 mm
Total power: 53 W
Weight: 1.7 kg



TLG_POPP_F_CLASST51X28DIFF.jpg



TLG_POPP_M_T5.wmf

All values marked with an * are rated values. Unless stated otherwise, the values apply to an ambient temperature of 25°C.

Thorn Lighting is constantly developing and improving its products. The right is reserved to change specifications without prior notification or public announcement.
© Thorn Lighting

PopPack Pro battens and modules

96548078 <POPPACK PRO 1x49W T16 HF OP L840

THORN