

THORN

Leopard

SwitchLite and
LED Bulkheads



Leopard

SwitchLite and LED Bulkheads

The Leopard 2D bulkhead is one of the most popular and versatile utility luminaries on the market.

Suitable for both interior and exterior use with its IP65 rating, it is just as happy illuminating a store room, set of toilets, student's accommodation, exterior walkways or stairwells.

Being pro-active to minimise the impact of the rapidly rising cost of energy is vital. Reducing building maintenance costs can also produce substantial savings.

Leopard SwitchLite and LED can achieve both of these when compared to standard 2D fluorescent bulkheads.

Why leave lights turned on when they're not needed? The automatic microwave detector inside Leopard SwitchLite ensures that does not happen, potentially producing huge energy savings.

LED lamp technology means instant light, reduced energy consumption, greater efficiency and massively increased lamp life.

Using the Leopard LED bulkhead 8 hours per day, 7 days a week, you're unlikely to need to change the lamp for the next 17 years and even using it 24/7 it is still almost 6 years.

Key product benefits

Suitable for both interior and exterior use

Automatic SwitchLite microwave movement detector provides light when you need it

SwitchLite 'master' luminaire can additionally control 3 'slave' bulkheads

LED technology offers huge increase in lamp life, instant light, reduced energy consumption and greater efficiency

Leopard LED

- Luminaire lumen output over 95% of the 28w 2D fluorescent lamp
- Average LED lamp life ($\geq 50,000$ hrs) massively reduces maintenance costs compared to conventional fluorescent alternatives
- Energy efficient - ECA compliant at 60 lm/w
- Available in both standard and microwave detector versions (with or without emergency mode control gear)

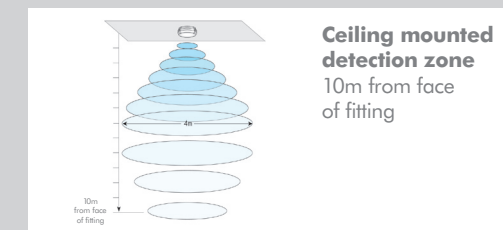
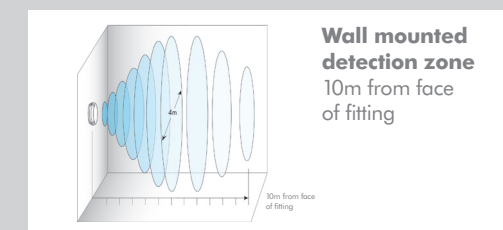
Gear tray with LED module



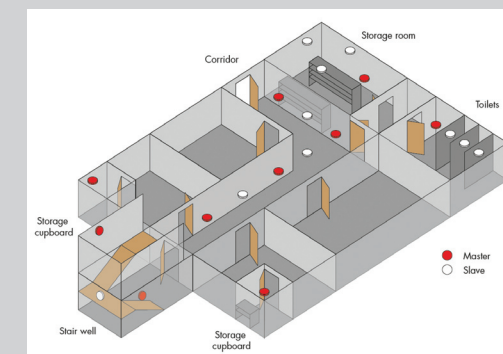
Leopard SwitchLite

- Suitable for use in areas of infrequent occupancy
- Integral microwave detector for motion and ambient light (5 - 1,000 lux)
- Can operate up to three additional 'slave' Leopard Bulkheads
- 10 mins. re-set (approx.), can be adjusted between 2secs and 1,200secs
- Microwave detector sensitivity adjustable between 20% and 100%
- Forward detection range up to 10m (depending on location and sensitivity adjustment)
- 4m diameter detection footprint
- Available with or without emergency mode control gear

Leopard SwitchLite Bulkhead



Typical layout of SwitchLite 'master' and standard 'slave' luminaires



Technical Data

	Leopard LED	Leopard 1x28W HF
Light source	LED	28W GE Wattmiser
Light output	10 x 200 lm	2020 lm*
Diffuser	Opal	Opal
LOR	100%	65%
Colour temperature	4000k	4000k
Luminaire lumens	1250	1310 lm*
Luminaire lm/W	>60	54
System power	20.5w	25w
Expected life time	50,000 hrs	15,000 hrs
Pre heat	No	Yes
Time to max light output	Instant	Up to 80s
Switching time	Instant	Warm up
Light output depending on ambient luminaire temperature		
-10°	100%	<20%
0°	100%	20%
+25°c	100%	100%
SwitchLite microwave detector	Yes	Yes
SwitchLite detection range	Up to 10m with a 4m diameter footprint	
SwitchLite version maximum mounting height	Wall = 2.7m Ceiling = 4m	
SwitchLite version adjustments	Time adjustment to re-set 2 - 1,200 secs Detector Sensitivity 20% - 100% Ambient light level 5 - 1,000 lux	
Emergency option	Yes	Yes
Emergency light source	Dedicated LED	2D lamp
Impact Resistance - IK10	Yes	Yes
Moisture and dust rating - IP65	Yes	Yes
Recyclable	Yes	Mercury in lamp
Maintenance	Minimal	Lamp replacement at least every 15,000 hrs

* Data based on lumen output at 2,000 hrs

Leopard Range Table

Product Code	Catalogue Number	Description
Leopard LED		
96240254	LEROLED1250W	1250 LED 4000K lamp, round, white, body with opal diffuser
96240256	E3LEROLED1250W	1250 LED 4000K lamp, round, white, body with opal diffuser and emergency mode operation
Leopard LED SwitchLite with microwave detector		
96240255	LEROMWSLED1250W	1250 LED 4000K lamp, microwave detector, round, white, body with opal diffuser
96240257	E3LEROMWSLED1250W	1250 LED 4000K lamp, microwave detector, round, white, body with opal diffuser and emergency mode operation
Leopard SwitchLite 28w 2D with microwave detector		
96239796	LEROMWS2D28B	28w 4000K 2D lamp, microwave detector, round, black, body with opal diffuser
96239797	LEROMWS2D28W	28w 4000K 2D lamp, microwave detector, round, white, body with opal diffuser
96239799	LESOMWS2D28B	28w 4000K 2D lamp, microwave detector, square, black, body with opal diffuser
96239800	LESOMWS2D28W	28w 4000K 2D lamp, microwave detector, square, white, body with opal diffuser
96239801	LERCMWS2D28B	28w 4000K 2D lamp, microwave detector, round, black, body with clear diffuser
96239802	LERCMWS2D28W	28w 4000K 2D lamp, microwave detector, round, white, body with clear diffuser
96239803	LESCMWS2D28B	28w 4000K 2D lamp, microwave detector, square, black, body with clear diffuser
96239804	LESCMWS2D28W	28w 4000K 2D lamp, microwave detector, square, white, body with clear diffuser
Leopard SwitchLite 28w 2D Emergency with microwave detector		
96239805	E3LEROMWS2D28B	28w 2D lamp, microwave detector, round, black, body with opal diffuser and emergency mode operation
96239806	E3LEROMWS2D28W	28w 2D lamp, microwave detector, round, white, body with opal diffuser and emergency mode operation
96239807	E3LESOMWS2D28B	28w 2D lamp, microwave detector, square, black, body with opal diffuser and emergency mode operation
96239808	E3LESOMWS2D28W	28w 2D lamp, microwave detector, square, white, body with opal diffuser and emergency mode operation
96239809	E3LERCMWS2D28B	28w 2D lamp, microwave detector, round, black, body with clear diffuser and emergency mode operation
96239810	E3LERCMWS2D28W	28w 2D lamp, microwave detector, round, white, body with clear diffuser and emergency mode operation
96239811	E3LESCMWS2D28B	28w 2D lamp, microwave detector, square, black, body with clear diffuser and emergency mode operation
96239812	E3LESCMWS2D28W	28w 2D lamp, microwave detector, square, white, body with clear diffuser and emergency mode operation

Thorn Lighting Limited

UK

Durhamgate, Spennymoor,
County Durham, DL16 6HL
Tel 01388 420042

Sales support to the market

Sales/Quotations
Tel 0844 855 4810
Fax 0844 855 4811
Email uk.quotations@thornlighting.com

Ireland

Thorn Lighting Limited
393 Holywood Road, Belfast, BT4 2LS
Tel (353) 1 4922 877
Fax (353) 1 4922 724

Spare parts

Tel 0191 301 3131
Fax 0191 301 3038
Email spares@thornlighting.com

Technical support

Tel 0844 855 4812
Fax 0191 301 3107
Email technical@thornlighting.com

Literature hotline

Brochures on specific products/ranges
Email brochures.uk@thornlighting.com

www.thornlighting.co.uk

Thorn Lighting is constantly developing and improving its products. All descriptions, illustrations, drawings and specifications in this publication present only general particulars and shall not form part of any contract. The right is reserved to change specifications without prior notification or public announcement. All goods supplied by the company are supplied subject to the company's General Conditions of Sale, a copy of which is available on request. All measurements are in millimetres and weights in kilograms unless otherwise stated.

Publication No: 542 (GB)
Publication Date: 12/11



ISO 9001:2008
Reg: AT-00005/5
ISO 14001:2004
Reg: AT-00247/2
Manufacturing