

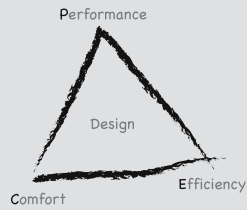
# THORN

## Cetus

A new statement in value  
for money compact  
fluorescent downlights



No hassle. No tools. No worries.  
Just faster, easier to install, low  
energy downlights at  
competitive prices.



**Performance:**  
visual effectiveness

- Horizontal lamp(s) for even light distribution with an LOR of over 55%

**Efficiency:** minimising the use of energy

- Compact fluorescent lamp(s) and HF control gear promotes energy efficiency
- Easy installation means low installation costs
- Recyclable components = eco-friendly

**Comfort:** giving people satisfaction and stimulation

- HF ballast gives flicker free light
- Decorative attachments



- Simple and quick to install. Reflector remains in place when mounting into the ceiling using the spring clips.
- One size: with 230mm bezel (210mm cut-out)
- Low 100mm height/ mounting void depth 110mm
- Suitable for ceiling thickness between 1-25mm
- Light output ratio at or about 55%
- Choice of HPF switchstart or high frequency integral control gear
- Tools not required for electrical or mechanical fixation
- 3 hour maintained emergency versions with remote gear
- Range of attachments, including tri-vane louvre and IP44 cover

### Lamps

- ☺ 18-26W TC-D (FSG)  
Cap: G24d-2/3
- ☺ 18-26W TC-DEL (FSG)  
Cap: G24q-2/3

### Materials/Finish

- Body: polycarbonate white
- Gear housing: polycarbonate, black
- Reflector: specular vacuum metallised plastic
- Attachments: polycarbonate/glass
- Fixing mechanism: steel

### Installation/Mounting

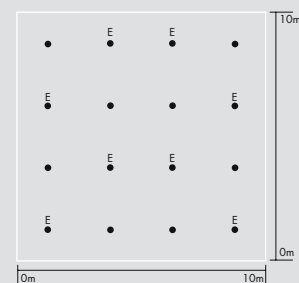
- Tool-free installation.
- Integrated strain relief.
- 3 pole piano key terminal block. Adjustable spring clips for fixation. (1-25mm ceiling thickness)

### Standards

- Designed and manufactured to comply with EN 60598
- Emergency versions: EN605982.22
- ⊕ Class I Electrical IP20 (IP44)
- CE

### Sample Lighting Layout

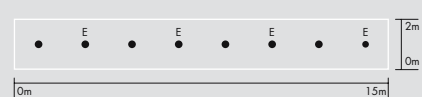
General area



- Room height: 3m
- Mounting height: 3.09m
- Maintenance factor: 0.67
- Lamps: 2 x 26W TC-DEL
- Light output: 2 x 1800 lumens
- Av. Illumination: 190 Lux

### Sample Lighting Layout

Corridor



- Room height: 2.6m
- Mounting height: 2.7m
- Maintenance factor: 0.67
- Lamps: 1 x 26W TC-DEL
- Light output: 1 x 1800 lumens
- Av. Illumination: 116 Lux



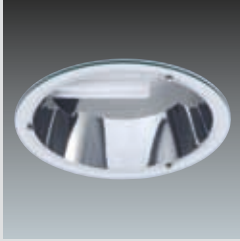
TRI-VANE LOUVRE



PC IP44 CL



PC IP44 OP



GLASS CL



GLASS FR



IP44 is achieved when the polycarbonate attachments are flush fitted to the bezel



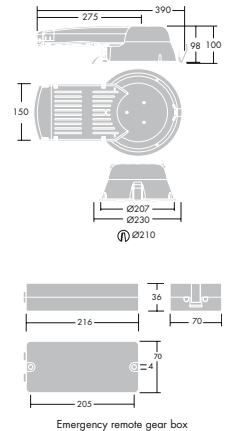
## Ordering Guide Lamp(s) supplied

Description	Ilcos Code	Socket	Weight (kg)	UK Cat No.	SAP Code
<b>Switchstart (integral gear)/840</b>					
CETUS 1X18W TC-D CP L 840	FSG	G24d-3	0.9	CET118	96107204
CETUS 1X26W TC-D CP L 840	FSG	G24d-3	0.9	CET126	96107205
CETUS 2X18W TC-D CP L 840	FSG	G24d-2	1.4	CET218	96107206
CETUS 2X26W TC-D CP L 840*	FSG	G24d-2	1.4	CET226	96107207
<b>High Frequency (integral gear)/840</b>					
CETUS 1X18W TC-DEL HF L 840	FSG	G24q-3	0.6	CETZ118	96107208
CETUS 1X26W TC-DEL HF L 840	FSG	G24q-3	0.6	CETZ126	96107209
CETUS 2X18W TC-DEL HF L 840	FSG	G24q-2	0.6	CETZ218	96107210
CETUS 2X26W TC-DEL HF L 840	FSG	G24q-2	0.6	CETZ226	96107211
<b>High Frequency Emergency (remote gear)/840</b>					
CETUS 1X18W TC-DEL HF E3 L 840	FSG	G24q-3	1.3	CETZE3118	96107212
CETUS 1X26W TC-DEL HF E3 L 840	FSG	G24q-3	1.3	CETZE3126	96107213
CETUS 2X18W TC-DEL HF E3 L 840	FSG	G24q-2	1.4	CETZE3218	96107214
CETUS 2X26W TC-DEL HF E3 L 840	FSG	G24q-2	1.5	CETZE3226	96107215
<b>Attachments</b>					
CETUS GLASS CL				CETCG	96107228
CETUS GLASS FR				CETFG	96107229
CETUS PC IP44 CL**				CETCP	96107230
CETUS PC IP44 OP**				CETFP	96107231
CETUS TRI-VANE LOUVRE				CETL	96107232

CP - Switchstart, HF - High Frequency, E3 - 3 hour emergency, CL - clear, FR - frosted, OP - opal

\* No IP44 attachment use on 2 x 26W CP versions

\*\* The mounting pins moulded to the attachment can be snapped off half way down to allow flush fitting to the bezel



Emergency remote gear box



**Head Office**

Thorn Lighting Limited  
Silver Screens, Elstree Way, Borehamwood,  
Hertfordshire, WD6 1FE  
Tel: 020 8732 9800  
Fax: 020 8732 9801  
E-mail: brochures.uk@thornlighting.com

**[www.thornlighting.co.uk](http://www.thornlighting.co.uk)**



Thorn Lighting is constantly developing and improving its products. All descriptions, illustrations, drawings and specifications in this publication present only general particulars and shall not form part of any contract. The right is reserved to change specifications without prior notification or public announcement. All goods supplied by the company are supplied subject to the company's General Conditions of Sale, a copy of which is available on request. All measurements are in millimetres and weights in kilograms unless otherwise stated.

**Publication No: 449 (GB) Publication Date: 12/08**