



INSTALLATION & MAINTENANCE INSTRUCTIONS FOR FLUORESCENT LUMINAIRES
PETRELUX 7 SERIES – STANDARD LUMINAIRES. CERTIFICATE No SIRA 01ATEX1033X
For Emergency Luminaires see publication TB27 or TB27A

- IT IS ESSENTIAL THAT THE INSTALLER CHECKS THAT THE PRODUCT IS SUITABLE FOR THE INTENDED APPLICATION
- THE LUMINAIRE MUST BE INSTALLED BY SUITABLY QUALIFIED PERSONNEL AND IN ACCORDANCE WITH THE APPROPRIATE PARTS OF BSEN60079 CODE OF PRACTICE FOR THE SELECTION INSTALLATION AND MAINTENANCE OF ELECTRICAL EQUIPMENT FOR USE IN POTENTIALLY EXPLOSIVE ATMOSPHERES OR EQUIVALENT NATIONAL STANDARDS OF THE COUNTRY CONCERNED.
- NO MODIFICATIONS TO THE LUMINAIRE ARE PERMITTED BECAUSE THIS COULD INVALIDATE CERTIFICATION.
- SPECIAL CONDITIONS FOR SAFE USE (DENOTED BY 'X' AFTER THE CERTIFICATE No). LUMINAIRES WITH GLASS TUBES SHALL ONLY BE INSTALLED IN AREAS WHERE THERE IS A LOW RISK OF IMOPACT

CERTIFICATION DATA

			T4	T5	T6
Size 1'	EEx d IIC	Polycarbonate/Glass	52°C	40°C	
Size 1'	EEx d IIC	Only 1 lamp to be operated at any time		55°C	40°C
Size 2'	EEx d IIC	Polycarbonate/Glass		55°C	40°C
Size 4'	EEx d IIC	Polycarbonate/Glass		55°C	40°C
Size 5'	EEx d IIC	Polycarbonate/Glass		55°C	40°C
Size 6'	EEx d IIC	Polycarbonate/Glass	55°C	40°C	

The temperatures shown above are the ambient temperatures for each T Classification and in addition all models are certified for operation down to - 25°C ambient temperature

INSTALLATION

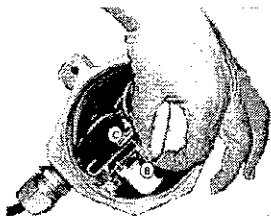
- The luminaire is factory assembled to allow removal of the interior from the label end although access to both ends is available. The orientation of the fitting should therefore be decided prior to installation unless a through wiring option is purchased

- Access to the luminaire is obtained by releasing the external shrouded locking screw and unscrewing the appropriate end cap. The end cap may be loosened using a spanner or other suitable tool laid flat across the cover against the 'V' notches (A). The end cover thread and O' ring gasket must be kept free of dust or dirt to ensure a correct seal on re-fitting

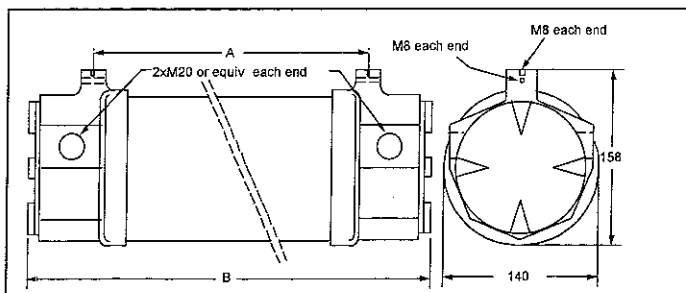


- It is recommended that the interior assembly is first removed and that the Light -

weight empty enclosure is installed. The lamp assembly is first withdrawn after disconnecting the floating plug and socket by squeezing the plug (B) to allow disconnection and then unplugging the mains connector (C) from the gear tray



- The luminaire is provided with 2 mounting holes tapped M8 at each end to permit suspended or unistrut mounting or equivalent
- The metal body components are supplied in an anodised form to provide long term protection but ensure the threaded flamepaths are treated with a non-setting grease during installation and subsequent maintenance



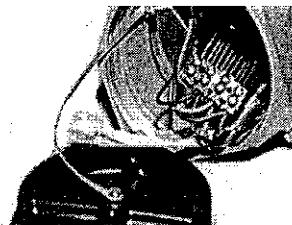
TECHNICAL DATA

Model	Rating	Lamp	Weight (kg)	A(mm)	B(mm)
Size 1'	1 or 2 x 8W	T5	4.2	334	452
	1 or 2 x 26W	PL	4.5		
Size 2'	1 or 2 x 18W	T8	6.0	632	752
	1 or 2 x 55W	PL	5.0		
Size 4'	1 or 2 x 36W	T8	7.5	1242	1362
	1 or 2 x 55W	PL	6.5		
Size 5'	1 or 2 x 58W	T8	9.0	1542	1682
Size 6'	1 or 2 x 18W	T8	10.5	1806	1926

ELECTRICAL CONNECTIONS

Always ensure that the mains supply is safely isolated before carrying out installation or maintenance work.

- We suggest that glanding to the luminaire but not terminal connection is made before the gear tray or lamp assembly is re-inserted
- The terminal block will accept up to 4mm² cable and is suitable for looping at each end and/or for through wiring if specified at the time of purchase. 2 x 20mm cable entries are provided at each end of the fitting of which 3 are plugged L1 is the switched mains connection and L2 is the un-switched mains connection used on emergency fittings only All unused cable entries must be fitted with certified flameproof plugs.
- Once cable and glands are fitted, the gear tray is re-inserted and connection made to the floating half of the black connector making sure to retain the earth connection. Plug the connector into the gear tray



- Insert the lamp assembly and re-connect the floating plug and socket
- After replacing the end cap(s) lightly tighten the locking grub screw to avoid accidental rotation of the end cap

MAINTENANCE

- Flamepaths should be checked periodically to ensure good condition and freedom from corrosion. Ensure that the flamepath is treated with a non-setting grease before re-sealing.
- Any replacement parts must be compatible with certification Contact PFP for details

SPARES	Size 1	Size 2	Size 4	Size 5	Size 6
Complete Enclosure					
Polycarbonate	2H69070001	2H69070002	2H69070004	2H69070005	2H69070006
Glass	2H69070011	2H69070012	2H69070014	2H69070015	N/A
End Cover	4H15240170	4H15240170	4H15240170	4H15240170	4H15240170
Cover Gasket	6GA00086	6GA00086	6GA00086	6GA00086	6GA00086
T.Block Fixed	6TA44700	6TA44700	6TA44700	6TA44700	6TA44700
T.Block Floating	6TA44701	6TA44701	6TA44701	6TA44701	6TA44701
Lampholder	Specify Type				
Starter Holder	6H32171073	6H32171073	6H32171073	6H32171073	6H32171073
Ballasts	Specify Type				