

THORN

D-CO LED

LED lighting for everyday
guidance and accent tasks
- indoor and outdoor



D-CO LED

Here's the best news ever for contractors and consultants in the display and night lighting business. It's the new D-CO LED range, a complete matching series of indoor and outdoor luminaires with so many features there's hardly room to list them all. But, just for a start, look at these big advantages:

- Majority designed to replace 20W and 35W MR16 halogen fittings, thus reducing running costs
- Mainly Osram LEDs for exact colour rendering and choice of constant colour appearance
- All versions are available complete with light source, pre-wired cable and converter to facilitate easy installation, ordering and customer convenience. What's more, there are 'plug and play' kits in strings of 3, 4, 5 or 6
- Maintenance free with lamp life up to 50,000 hours
- Light level can be regulated with dimmable options
- Cold light, no UV or IR, plus any front glasses remain cool to the touch
- Interior fittings in white or grey (Wall Asymmetric in anodised aluminium)

Competitively priced, the new range gives reliability, efficiency and ease of installation, thus providing a simple and attractive solution to guide, accent and night-light situations.



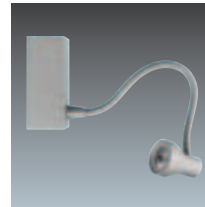


Product overview

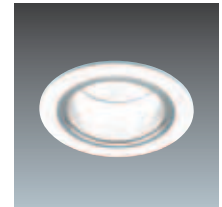
Indoor



3W Mini Spotlight
p.4



3W Mini Spotlight
with flexible arm
p.4



3 x 3W Downlight
p.5



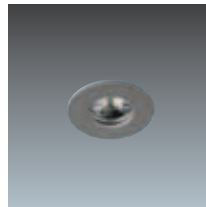
6 x 1.2W Downlight
p.5



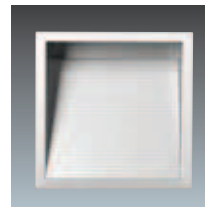
6 x 1.2W Multi-
directional downlight
p.6



3 x 1.2W Downlight
p.6

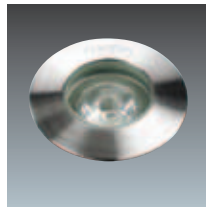


1.2W Mini Downlight
p.7

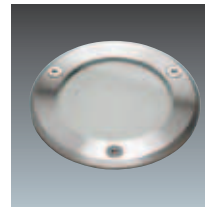


Recessed Wall Asymmetric
p.7

Outdoor



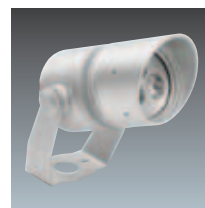
Mini Recessed
p.12



Medium Recessed
p.12

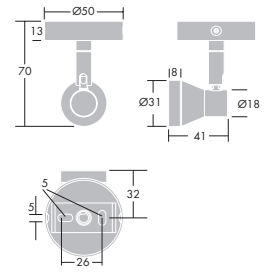


Maxi Recessed
p.13



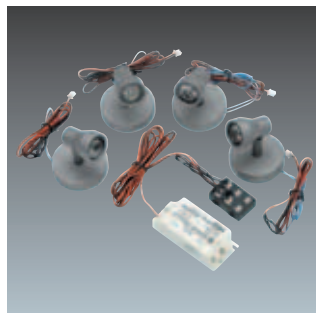
Flood
p.13

3W Mini Spotlight



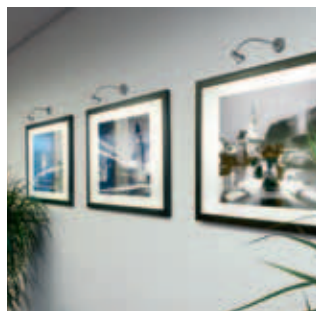
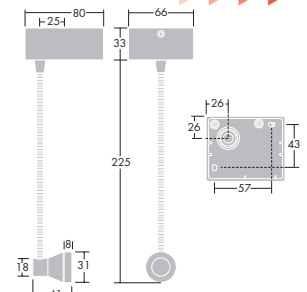
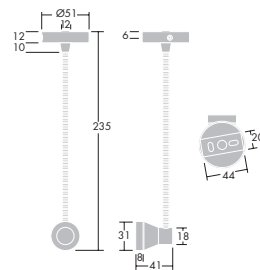
Mounting height	E _{max}	Beam Diameter
1 m	639 lux	0.36 m
2 m	160 lux	0.72 m
3 m	71 lux	1.08 m
4 m	40 lux	1.44 m

- Compact spotlight with short arm - fits palm of the hand.
- Precise 20° beam in either warm white (3000K) or cold white (4000K) - great for working or selling by
- Rotates 355° and can be tilted through 80°
- Surface mounts. Comes pre-wired with cable tail for use with remote switchable or dimmable converter
- Available in kit form - 4 spots, individually pre-wired with connector cables and single converter (pre-wired with cable into central connector block)
- Finished Titan grey



1 x 3W LED
Class III electrical
700mA, 230V as kit with driver
IP20 CE

3W Mini Spotlight with flexible arm



Mounting height	E _{max}	Beam Diameter
1 m	639 lux	0.36 m
2 m	160 lux	0.72 m
3 m	71 lux	1.08 m
4 m	40 lux	1.44 m

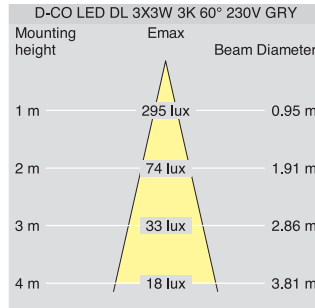
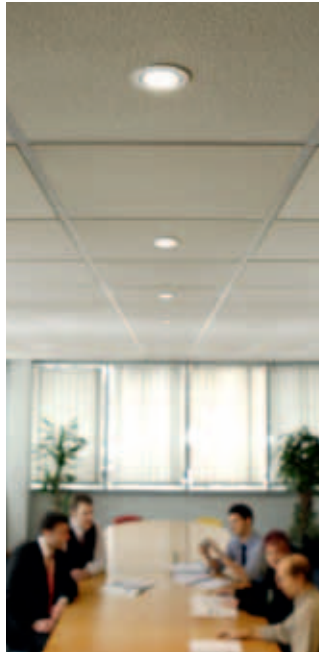
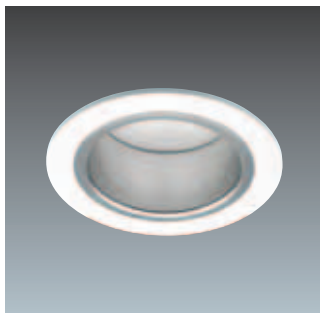
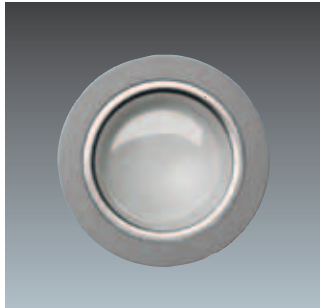
- Compact spotlight with flexible arm allowing directional light
- Precise 20° beam in either warm white (3000K) or cold white (4000K)
- Surface mounts. Choice of base: large base houses converter, small base supplied pre-wired with cable tail for use with remote converter
- Finished Titan grey
- Ideal bedhead unit for hotel and residential applications. Also suitable for display lighting.



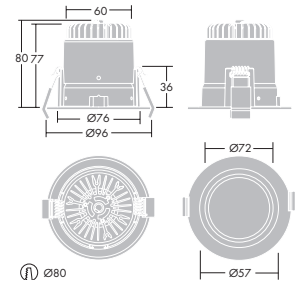
1 x 3W LED
Class I electrical
Class III electrical
700mA, 230V including driver
IP20 CE

Version with integral gear

3 x 3W Downlight

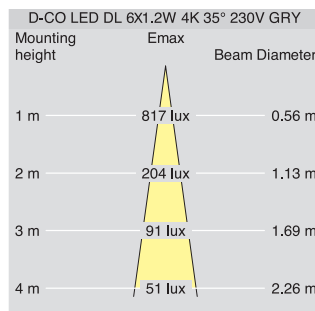


3 x 3W LED
Class II electrical (for 230V version)
Class III electrical (for 700mA version)
700mA, 230V including driver
IP20 CE

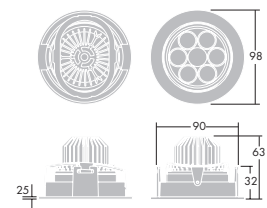


- Round, fixed, recessed downlight
- Comes pre-wired with cable directly into a remote 9W converter. Less gear option, pre-wired with cable tail for use with remote dimmable converter
- Simple 20W MR16 LV halogen replacement (9W circuit load)
- Wide 60° beam in either warm white (3000K) or cold white (4000K)
- Choice of white or Titan grey finish
- No glare/spill light

6 x 1.2W Downlight

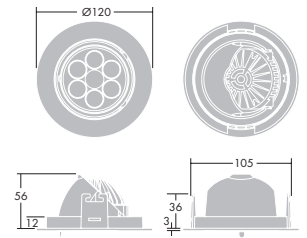


6 x 1.2W LED
Class II electrical (for 230V version)
Class III electrical (for 350mA version)
350mA, 230V including driver
IP20 CE



- Round, fixed and adjustable (+/- 20°), recessed downlight
- Comes pre-wired with cable directly into a remote 8W converter. Less gear option, pre-wired with cable tail for use with remote dimmable converter
- Choice of beam angles: 15°, 24° or 35°
- Simple 35W MR16 LV halogen replacement
- Available in warm white (3000K) or cold white (4000K) options
- Choice of white or Titan grey finish

6 x 1.2W Multi-directional downlight

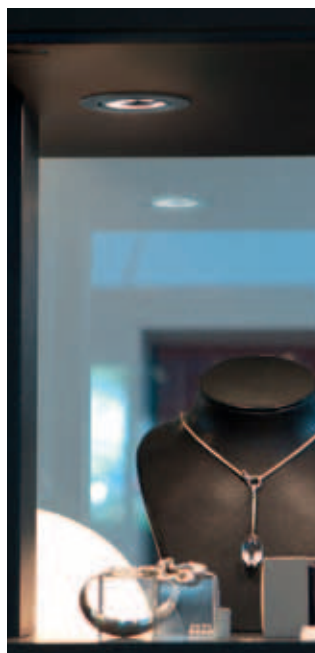
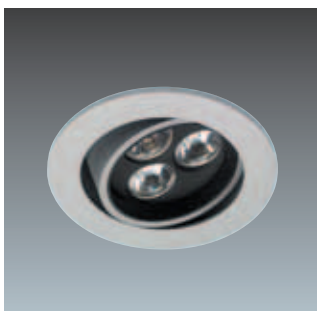
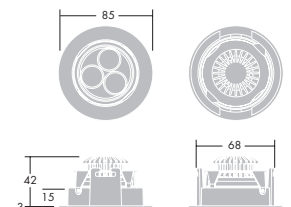


Mounting height	E _{max}	Beam Diameter
1 m	1745 lux	0.40 m
2 m	436 lux	0.81 m
3 m	194 lux	1.21 m
4 m	109 lux	1.61 m

6 x 1.2W LED
Class II electrical (for 230V version)
Class III electrical (for 350mA version)
350mA, 230V including driver
IP20 CE

- Round, gyro adjustable (40° tilt and 355° rotation), recessed downlight.
- Comes pre-wired with cable directly into a remote 8W converter. Less gear option, pre-wired with cable tail for use with remote dimmable converter
- Simple 35W MR16 LV halogen replacement
- Available in warm white (3000K) or cold white (4000K) options
- Choice of white or Titan grey finish

3 x 1.2W Downlight

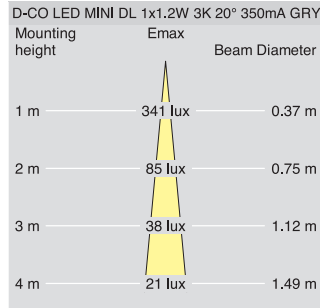
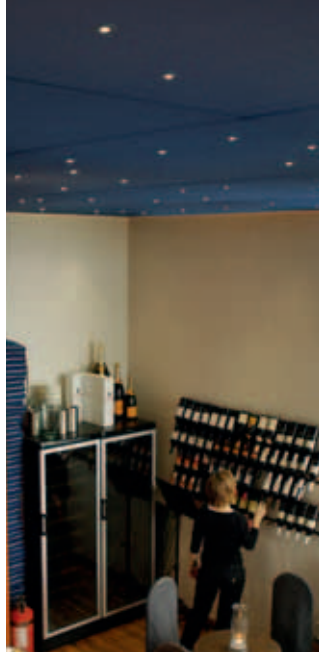
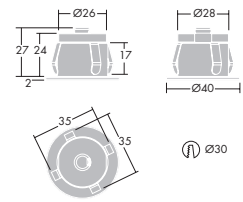


Mounting height	E _{max}	Beam Diameter
1 m	483 lux	0.55 m
2 m	121 lux	1.10 m
3 m	54 lux	1.65 m
4 m	30 lux	2.20 m

3 x 1.2W LED
Class III electrical
350mA
IP20 CE

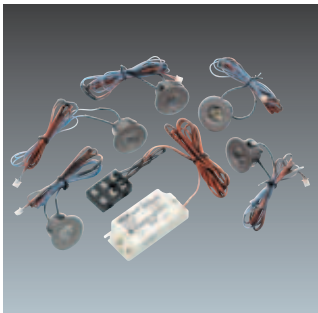
- Round, fixed and adjustable (+/- 20°), recessed downlight.
- Comes pre-wired with cable for use with remote switchable or dimmable converter
- Available in kit form - 3 downlights, individually pre-wired with connector cables and single converter (pre-wired with cable into central connector block)
- Choice of beam angles: 15°, 24° or 35°
- Simple 20W MR16 LV halogen replacement
- Available in warm white (3000K) or cold white (4000K) options
- Finished Titan grey

1.2W Mini Downlight

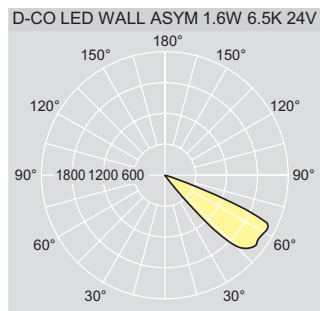
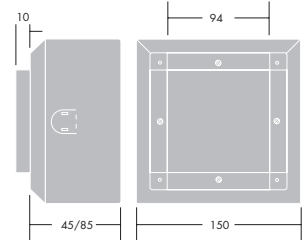
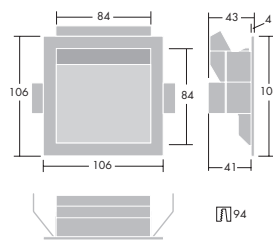


1 x 1.2W LED
Class III electrical
350mA, 230V as kit with driver
IP20 CE

- Miniature round, fixed, recessed downlight
- Comes pre-wired with cable tail for use with remote switchable or dimmable converter
- Precise 20° beam in either warm white (3000K) or cold white (4000K) options
- Available in kit form - 5 downlights, individually pre-wired with connector cables and single converter (pre-wired with cable into central connector block)
- Finished Titan grey
- Ideal for decorative effects (night sky), shelves and display cases



Recessed Wall Asymmetric



1.6W LED
Class III electrical
24V DC
IP20 CE

- Compact square wall guidance luminaire for interior recessing housing or hollow walls
- Hidden light source gives glare-free light
- Asymmetric reflector casts an even wash of light onto the floor
- Comes pre-wired with cable tail for use with remote 24V DC converter
- Available in warm white (3000K) or cold white (6500K) options
- Finished anodised aluminium
- Recessed box available as an accessory



Technical information

D-CO LED Driver range overview (number of fittings per driver)

350mA + 24V luminaires

SAP code	SAP description	Description	1.2W Mini Downlight	3 x 1.2W Downlight	6 x 1.2W Downlight	6 x 1.2W Downlight Multi-directional	1.6W Asymmetric Wall Recessed
96107644*	LED CONVERTER 8W DC24V	8W switchable	-	-	-	-	5
96107645*	LED CONVERTER 25W DC24V	25W switchable	-	-	-	-	15
86455937*	LED 0025 K210 24V One4all	25W dimmable	-	-	-	-	15
96107646*	LED CONVERTER 8W 350mA 100-240V 3PLUG	8W switchable inc 3 way connector	6***	2	-	-	-
96107647*	LED CONVERTER 12W 350mA 100-240V 6PLUG	12W switchable inc 6 way connector	10***	3	-	-	-
96107648*	LED CONVERTER 6W 350mA 230V 1-10 DIM	6W dimmable	5	1	-	-	-
96107649*	LED CONV 15/25W UNI 110-240V DIM**	15W/25W dimmable	12	4	2	2	-
96107650	LED MULTIPLUG 3WAY SERIES 350mA	3 way connector	3	3	3	3	-
96107651	LED MULTIPLUG 6WAY SERIES 350mA	6 way connector	6	6	-	-	-

700mA luminaires

SAP code	SAP description	Description	3W Spotlight	3W Mini Spotlight with flexible arm	3W Mini Spotlight with flexible arm and integrated gear	3 x 3W Downlight
96107649*	LED CONV 15/25W UNI 110-240V DIM**	15W/25W dimmable	8	8	-	2
96108001*	LED CONVERTER 3W 700mA 100-240V 3PLUG	3W switchable inc 3 way connector	1	1	-	-
96108002*	LED CONVERTER 12W 700mA 100-240V 6PLUG	12W switchable inc 3 way connector	4***	4***	-	1
96108003*	LED CONVERTER 18W 700mA 100-240V 6PLUG	18W switchable inc 3 way connector	6***	6***	-	2
96107980	LED MULTIPLUG 3WAY SERIES 700mA	3 way connector	3	3	-	3
96108000	LED MULTIPLUG 6WAY SERIES 700mA	6 way connector	6	6	-	6

* Secondary side: cable length 15m maximum, cross section 2 x 1.5mm² recommended

** 96107649 fits both 350mA luminaires (total load up to 15W) and 700mA luminaires (total load up to 25W)

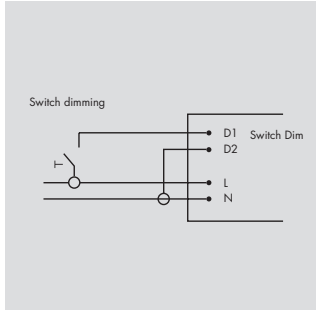
*** The maximum number of fittings per driver can be connected by ordering an additional multiplug connector (3 or 6 way)



Input

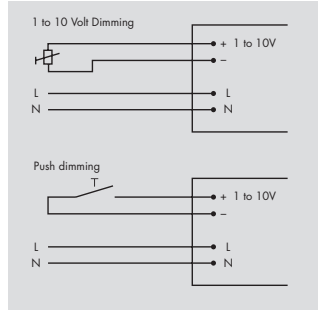
86455937

LED 0025 K210 24V One4all
25W driver for wall
asymmetric, dimmable



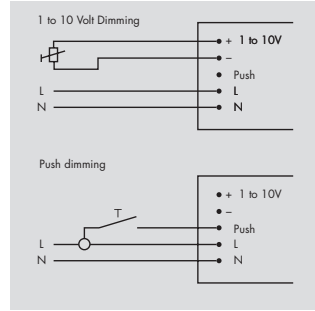
96107648

LED CONVERTER 6W 350mA
230V DIM driver for all
downlights and spots, dimmable

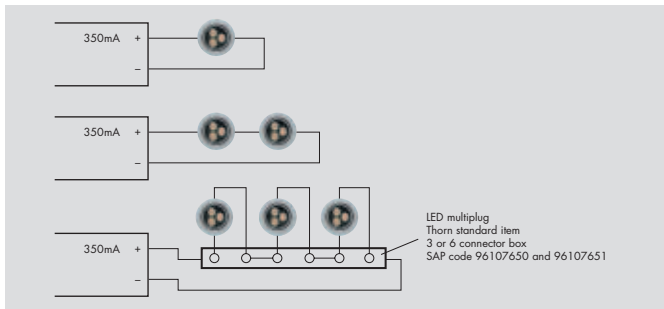


96107649

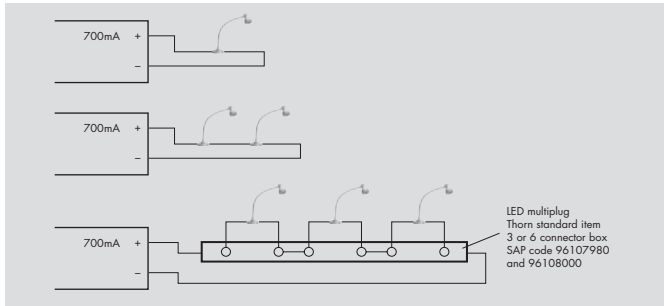
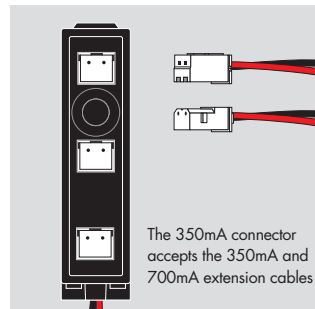
LED CONV 15/25W UNI 110-240V
DIM driver for all downlights and
spots, dimmable



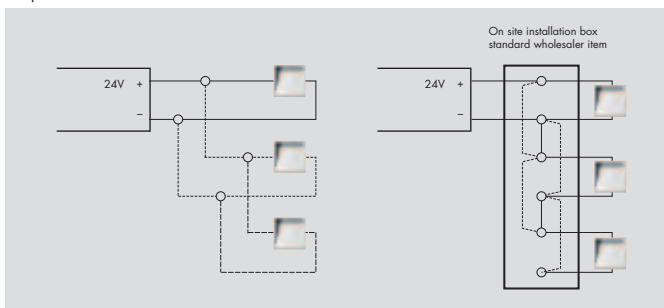
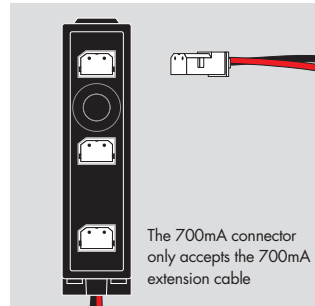
Output



Output for 350mA (all downlights and spots)



Output for 700mA



Output for 24V (Asymmetric Wall Recessed)

Indoor version product features and ordering guides

Materials/Finish

Bodies: die-cast aluminium with white or Titan grey finish
Asymmetric Wall: anodised aluminium

Installation

Downlights fixed with 2 spring clips. Suitable for ceiling thicknesses between 1 and 22mm (3 x 1.2W model, 1-25mm).

Downlight cut out diameters:
3x3W Ø 80mm; 6x1.2W Ø 90mm; 6x1.2W Gyro Ø 105mm; 3x1.2W Ø 75mm and 1x1.2W Ø 30mm.

Asymmetric Wall suitable for wall thickness between 1 and 19mm. Minimum void depth 43mm. Also fits recessing box (minimum void depth 55mm or 95mm for the deep version)

Pre-wired halogen-free cable included. Length 0.7m.

Extension cable between fittings available. Length 1 or 2m.

Downlights and spots connect in series. Kits are individually pre-wired with cables for plug and play connection into a central connector block (pre-wired with cable into a single converter).

Wall lights connect in parallel
Dimmable converters 2-100%

Ordering guide

Description		Weight (Kg)	SAP Code
3W Mini Spotlight			
D-CO LED MINI SP 1X3W 3K 20° 700mA GRY	Mini Spotlight	0.1	96107965
D-CO LED MINI SP 1X3W 4K 20° 700mA GRY	Mini Spotlight	0.1	96107966
D-CO LED MINI SP 4/1X3W 3K20° 230V KIT	Kit of 4 Mini Spotlight and 1 switchable driver	0.4	96107967
D-CO LED MINI SP 4/1X3W 4K20° 230V KIT	Kit of 4 Mini Spotlight and 1 switchable driver	0.4	96107968
3W Mini Spotlight with flexible arm			
D-CO LED MINI FLEX 1X3W 3K 20° 700mA GRY	Mini Spot with flexible arm	0.2	96107865
D-CO LED MINI FLEX 1X3W 4K 20° 700mA GRY	Mini Spot with flexible arm	0.2	96107866
D-CO LED MINI FLEX 1X3W 3K 20° 230V GRY	Mini Spot with flexible arm and integrated gear	0.3	96107867
D-CO LED MINI FLEX 1X3W 4K 20° 230V GRY	Mini Spot with flexible arm and integrated gear	0.3	96107868
Low glare 3 x 3W Downlight			
D-CO LED DL 3X3W 3K 60° 230V GRY	Low glare DL incl. switchable driver	0.4	96107861
D-CO LED DL 3X3W 4K 60° 230V GRY	Low glare DL incl. switchable driver	0.4	96107862
D-CO LED DL 3X3W 3K 60° 230V WHI	Low glare DL incl. switchable driver	0.4	96107863
D-CO LED DL 3X3W 4K 60° 230V WHI	Low glare DL incl. switchable driver	0.4	96107864
D-CO LED DL 3X3W 3K 60° 700mA GRY	Low glare DL for dimmable drivers (delivered w/o driver)	0.4	96107975
D-CO LED DL 3X3W 3K 60° 700mA WHI	Low glare DL for dimmable drivers (delivered w/o driver)	0.4	96107976
6 x 1.2W Downlight (grey or white)			
D-CO LED DL 6X1.2W 3K 15° 230V GRY	Grey version incl switchable driver	0.4	96107443
D-CO LED DL 6X1.2W 3K 24° 230V GRY	Grey version incl switchable driver	0.4	96107444
D-CO LED DL 6X1.2W 3K 35° 230V GRY	Grey version incl switchable driver	0.4	96107445
D-CO LED DL 6X1.2W 4K 15° 230V GRY	Grey version incl switchable driver	0.4	96107446
D-CO LED DL 6X1.2W 4K 24° 230V GRY	Grey version incl switchable driver	0.4	96107447
D-CO LED DL 6X1.2W 4K 35° 230V GRY	Grey version incl switchable driver	0.4	96107448
D-CO LED DL 6X1.2W 3K 15° 230V WHI	White version incl switchable driver	0.4	96107846
D-CO LED DL 6X1.2W 3K 24° 230V WHI	White version incl switchable driver	0.4	96107847
D-CO LED DL 6X1.2W 3K 35° 230V WHI	White version incl switchable driver	0.4	96107848
D-CO LED DL 6X1.2W 4K 15° 230V WHI	White version incl switchable driver	0.4	96107849
D-CO LED DL 6X1.2W 4K 24° 230V WHI	White version incl switchable driver	0.4	96107850
D-CO LED DL 6X1.2W 4K 35° 230V WHI	White version incl switchable driver	0.4	96107851
6 x 1.2W Downlight Gyro (grey or white)			
D-CO LED DL 6X1.2W GYRO 3K 15° 230V GRY	Grey version incl switchable driver	0.4	96107449
D-CO LED DL 6X1.2W GYRO 3K 24° 230V GRY	Grey version incl switchable driver	0.4	96107450
D-CO LED DL 6X1.2W GYRO 3K 35° 230V GRY	Grey version incl switchable driver	0.4	96107451
D-CO LED DL 6X1.2W GYRO 4K 15° 230V GRY	Grey version incl switchable driver	0.4	96107452
D-CO LED DL 6X1.2W GYRO 4K 24° 230V GRY	Grey version incl switchable driver	0.4	96107453
D-CO LED DL 6X1.2W GYRO 4K 35° 230V GRY	Grey version incl switchable driver	0.4	96107454
D-CO LED DL 6X1.2W GYRO 3K 15° 230V WHI	White version incl switchable driver	0.4	96107852
D-CO LED DL 6X1.2W GYRO 3K 24° 230V WHI	White version incl switchable driver	0.4	96107853
D-CO LED DL 6X1.2W GYRO 3K 35° 230V WHI	White version incl switchable driver	0.4	96107854
D-CO LED DL 6X1.2W GYRO 4K 15° 230V WHI	White version incl switchable driver	0.4	96107855
D-CO LED DL 6X1.2W GYRO 4K 24° 230V WHI	White version incl switchable driver	0.4	96107856
D-CO LED DL 6X1.2W GYRO 4K 35° 230V WHI	White version incl switchable driver	0.4	96107857
6 x 1.2W Downlight w/o driver for dimmable gears			
D-CO LED DL 6X1.2W 3K 15° 350mA WHI	only white versions with 3000K, for dimmable drivers (delivered w/o driver)	0.3	96107969
D-CO LED DL 6X1.2W 3K 24° 350mA WHI	only white versions with 3000K, for dimmable drivers (delivered w/o driver)	0.3	96107970
D-CO LED DL 6X1.2W 3K 35° 350mA WHI	only white versions with 3000K, for dimmable drivers (delivered w/o driver)	0.3	96107971
D-CO LED DL 6X1.2W GYRO 3K 15° 350mA WHI	only white versions with 3000K, for dimmable drivers (delivered w/o driver)	0.3	96107972
D-CO LED DL 6X1.2W GYRO 3K 24° 350mA WHI	only white versions with 3000K, for dimmable drivers (delivered w/o driver)	0.3	96107973
D-CO LED DL 6X1.2W GYRO 3K 35° 350mA WHI	only white versions with 3000K, for dimmable drivers (delivered w/o driver)	0.3	96107974

Ordering guide (continued)

Description		Weight (Kg)	SAP Code
3 x 1.2W Downlight			
D-CO LED DL 3X1.2W 3K 15° 350mA GRY	Grey version (delivered w/o driver)	0.3	96107431
D-CO LED DL 3X1.2W 3K 24° 350mA GRY	Grey version (delivered w/o driver)	0.3	96107432
D-CO LED DL 3X1.2W 3K 35° 350mA GRY	Grey version (delivered w/o driver)	0.3	96107433
D-CO LED DL 3X1.2W 4K 15° 350mA GRY	Grey version (delivered w/o driver)	0.3	96107434
D-CO LED DL 3X1.2W 4K 24° 350mA GRY	Grey version (delivered w/o driver)	0.3	96107435
D-CO LED DL 3X1.2W 4K 35° 350mA GRY	Grey version (delivered w/o driver)	0.3	96107436
D-CO LED DL 3/3X1.2W 3K 15° 230V KIT GRY	Kit of 3 Downlight and 1 switchable driver	0.9	96107437
D-CO LED DL 3/3X1.2W 3K 24° 230V KIT GRY	Kit of 3 Downlight and 1 switchable driver	0.9	96107438
D-CO LED DL 3/3X1.2W 3K 35° 230V KIT GRY	Kit of 3 Downlight and 1 switchable driver	0.9	96107439
D-CO LED DL 3/3X1.2W 4K 15° 230V KIT GRY	Kit of 3 Downlight and 1 switchable driver	0.9	96107440
D-CO LED DL 3/3X1.2W 4K 24° 230V KIT GRY	Kit of 3 Downlight and 1 switchable driver	0.9	96107441
D-CO LED DL 3/3X1.2W 4K 35° 230V KIT GRY	Kit of 3 Downlight and 1 switchable driver	0.9	96107442
1.2W Mini Downlight			
D-CO LED MINI DL 1X1.2W 3K 20° 350mA GRY	Mini Downlight	0.1	96107427
D-CO LED MINI DL 1X1.2W 4K 20° 350mA GRY	Mini Downlight	0.1	96107428
D-CO LED MINI DL 5/1X1.2W 3K20° 230V KIT	Kit of 5 Mini Downlight and 1 switchable driver	0.4	96107429
D-CO LED MINI DL 5/1X1.2W 4K20° 230V KIT	Kit of 5 Mini Downlight and 1 switchable driver	0.4	96107430
Recessed wall asymmetric			
D-CO LED WALL ASYM 1.6W 3K 24V	Asymmetric fitting for wall installation	0.1	96107419
D-CO LED WALL ASYM 1.6W 6.5K 24V	Asymmetric fitting for wall installation	0.1	96107420
D-CO LED WALL CONCRETE MTG BOX	Concrete mounting box for asymmetric fitting	0.1	96107421
D-CO LED WALL CONCRETE MTG BOX DEEP	Concrete mounting box for asymmetric fitting	0.1	96107422

WHI - white, GRY - grey

Drivers/transformers Ordering guide

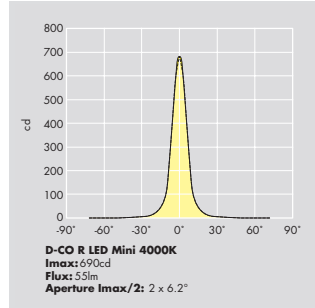
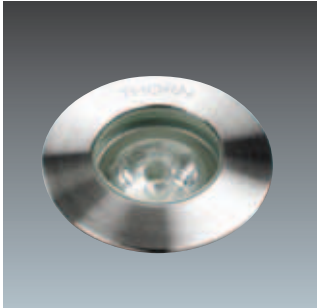
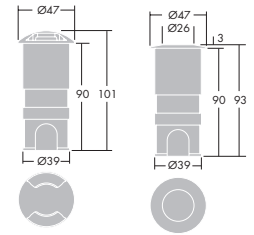
Description		Weight (Kg)	SAP Code
Drivers for 700mA fittings			
LED CONV 15/25W UNI 110-240V DIM	Dimmable 1 - 10V	0.1	96107649
LED CONVERTER 3W 700mA 100-240V 3PLUG	Incl multiplug 3 way connector	0.1	96108001
LED CONVERTER 12W 700mA 100-240V 6PLUG	Incl multiplug 6 way connector	0.1	96108002
LED CONVERTER 18W 700mA 100-240V 6PLUG	Incl multiplug 6 way connector	0.1	96108003
Drivers for 350mA fittings			
LED CONV 8W 350mA 100-240V 3PLUG	Incl 3plug connector	0.1	96107646
LED CONV 12W 350mA 100-240V 6PLUG	Incl 6plug connector	0.1	96107647
LED CONVERTER 6W 350mA 230V 1-10 DIM	Dimmable switchDIM 1 - 10V	0.1	96107648
LED CONV 15/25W UNI 110-240V DIM	Dimmable 1 - 10V	0.1	96107649
Transformers for 24V fittings (Wall asymmetric)			
LED CONVERTER 8W DC24V		0.1	96107644
LED CONVERTER 25W DC24V		0.1	96107645
LED 0025 K210 24V one4all	Dimmable 0.1 - 100% switchDIM, DALI, DSI	0.1	86455937

Converters are available with constant output voltages of 24V for the asymmetric wall fitting and with constant output currents of 350mA and 700mA for all downlights and spotlights. There are both dimmable and non-dimmable versions for both types. All versions are thermally stable to ensure optimum operation and long life. Other benefits include safety extra low voltage (SELV) and EMC protection.

Attachments Ordering guide

Description		Weight (Kg)	SAP Code
LED EXTENSION 2m PLUG/SOCKET 350mA	2m Extension cable 350mA	0.1	96107977
LED EXTENSION 2m PLUG/SOCKET 700mA	2m Extension cable 700mA	0.1	96107978
LED EXTENSION 1m SOCKET/CLIP 350mA	1m Extension cable 350mA	0.1	96108024
LED EXTENSION 1m SOCKET/CLIP 700mA	1m Extension cable 700mA	0.1	96108025
LED MULTIPLUG 3WAY SERIES 700mA	Multiplug 3 way for 700mA versions	0.1	96107980
LED MULTIPLUG 6WAY SERIES 700mA	Multiplug 6 way for 700mA versions	0.1	96108000
LED MULTIPLUG 3WAY SERIES 350mA	Multiplug 3 way for 350mA versions	0.1	96107650
LED MULTIPLUG 6WAY SERIES 350mA	Multiplug 6 way for 350mA versions	0.1	96107651

Mini Recessed

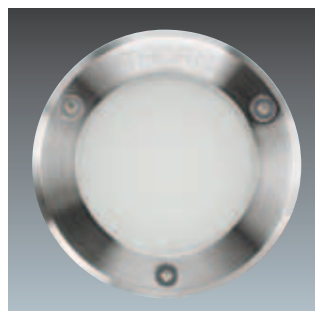
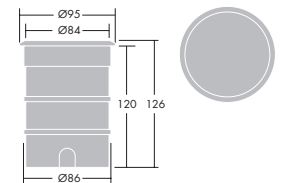


- Miniature, recessed, round walkover luminaire
- LEDs in blue or white (warm white 3000K or cold white 4000K)
- Supplied pre-wired with remote gear, recessed box, plastic end cap, connectors and 3way connection box
- Available in kit form - 6 fittings, individually pre-wired with recessed box, plastic end cap and 8way connection box containing gear and connectors. If a single LED fails, the other LEDs continue to operate.
- Choice of clear or frosted glass in stainless steel frame
- Twin domed window option
- All versions are low temperature 'touch'



🏠 1.2W LEDs	👉
EN60598-2-13	
📏 Class II electrical	
🛡️ IK10 impact resistance	
💧 IP68	🇪🇺 CE

Medium Recessed

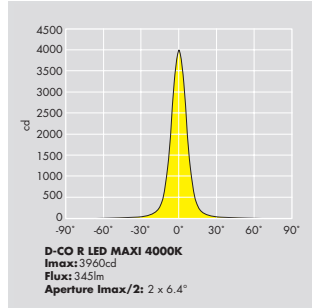
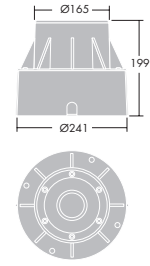


- Medium sized, recessed round walkover luminaire
- LEDs in blue or white (warm white 3000K or cold white 4000K)
- Supplied pre-wired with recessed box and plastic end cap
- Integral gear
- Frosted glass
- Low temperature 'touch'



🏠 1.2W LEDs	👉
EN60598-2-13	
📏 Class II electrical	
🛡️ IK09 impact resistance	
💧 IP67	🇪🇺 CE

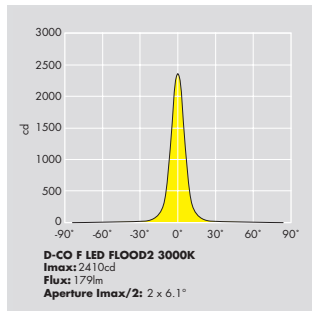
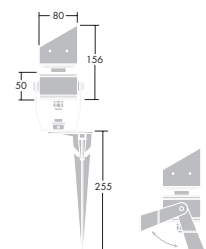
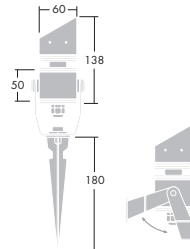
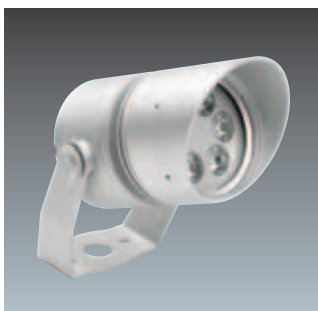
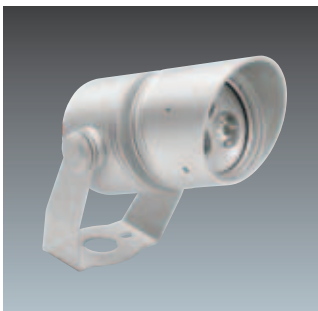
Maxi Recessed



- 1.2W LEDs
- 50W QR-CBC Cap: GZ10
- 14W TC-TSE Cap: E27
- EN60598-2-13
- Class I electrical
- IK10 impact resistance
- IP67 CE

- Large sized, recessed round walkover luminaire
- Clear glass
- LEDs in blue or white (warm white 3000K or cold white 4000K)
- Supplied pre-wired with recessed box and plastic end cap
- Halogen and compact fluorescent versions
- Integral gear
- Tilt: +/- 24° for the LED version, +/- 42° for the dichroic version, +/- 22° for the compact fluorescent version

Flood



- 1.2W LEDs
- EN60598
- Class I electrical
- IK08 impact resistance
- IP67 CE

- Circular compact floodlight with smooth edges
- LEDs in warm white (3000K) or cold white (4000K)
- Stirrup or ground spike mounting
- Visor to limit glare
- Two body sizes
- All versions have integral gear
- Supplied pre-wired

Outdoor version product features and ordering guides

Materials/Finish

Recessed units

Body: aluminium (except medium, PC/ABS blend), CNC Electrophoresis

Recessed housing: aluminium (except Maxi - ABS) with plastic end cap

Glass: toughened frosted or clear
Frames/Windows: stainless steel 316L

Gasket: anti-ageing silicone

Reflector (Maxi only): aluminium

Connection boxes

Body: PC/ABS blend

Floodlights

Body: aluminium, finished in grey

Glass: toughened glass

Gasket: anti-ageing silicone

Stirrup: aluminium finished in grey

Spike: aluminium finished in black

Installation/Mounting

Recessed units

In ground: To ensure efficient drainage, gravel must be used to a depth of 300mm beneath the housing. The plastic end cap prevents ingress of concrete during installation.

All the fittings are supplied with 5m cable. Single Mini units are supplied pre-wired with cable with remote gear, recessed box, plastic end cap, connectors and 3 way connection box. Mini kit luminaires are individually pre-wired with cable and supplied with an 8 way connection box, containing gear and connectors - including a specific connector for through wiring. If a single LED fails, the other system LEDs continues to operate. Connector has LED failure alerting display. Static load: 500kg

Floodlights

Supplied pre-wired with 5m cable

Connection boxes

Two versions: One has 3 glanded cable entries 2x PG13 (in) and 1x PG9 (out), the other 8 glanded cable entries 2 x PG13 (in) and 6 x PG9 (out).

D-CO LED Outdoor

Description	Weight (Kg)	Colours	SAP Code
Recessed Mini			
D-CO R LED MINI 1X1.2W WHI 4K CL	0.5	Cold white	96257227
D-CO R LED MINI 1X1.2W WHI 3K CL	0.5	Warm white	96257228
D-CO R LED MINI 1X1.2W BLU CL	0.5	Blue	96257229
D-CO R LED MINI 1X1.2W WHI 4K FR	0.5	Cold white	96257230
D-CO R LED MINI 1X1.2W WHI 3K FR	0.5	Warm white	96257231
D-CO R LED MINI 1X1.2W BLU FR	0.5	Blue	96257232
D-CO R LED MINI 6/1X1.2W WHI 4K EW2	0.5	Cold white	96257233
D-CO R LED MINI 1X1.2W WHI 3K EW2	0.5	Warm white	96257234
D-CO R LED MINI 1X1.2W BLU EW2	0.5	Blue	96257235
Recessed Mini Kits			
D-CO R LED MINI 6/1X1.2W WHI 4K CL KIT	1.4	cold white	96257248
D-CO R LED MINI 6/1X1.2W WHI 3K CL KIT	1.4	warm white	96257249
D-CO R LED MINI 6/1X1.2W BLU CL KIT	1.4	Blue	96257250
D-CO R LED MINI 6/1X1.2W WHI 4K FR KIT	1.4	Cold white	96257251
D-CO R LED MINI 6/1X1.2W WHI 3K FR KIT	1.4	warm white	96257252
D-CO R LED MINI 6/1X1.2W BLU FR KIT	1.4	Blue	96257253
D-CO R LED MINI 6/1X1.2W WHI 4K EW2 KIT	1.4	Cold white	96257254
D-CO R LED MINI 6/1X1.2W WHI 3K EW2 KIT	1.4	warm white	96257255
D-CO R LED MINI 6/1X1.2W BLU EW2 KIT	1.4	Blue	96257256
Recessed Medium			
D-CO R LED MEDIUM 1X1.2W WHI 4K FR	0.7	Cold white	96257236
D-CO R LED MEDIUM 1X1.2W WHI 3K FR	0.7	warm white	96257237
D-CO R LED MEDIUM 1X1.2W BLU FR	0.7	Blue	96257238
Recessed Maxi			
D-CO R LED MAXI 6X1.2W WHI 4K CL	3.0	Cold white	96257239
D-CO R LED MAXI 6X1.2W WHI 3K CL	3.0	warm white	96257240
D-CO R LED MAXI 6X1.2W BLU CL	3.0	Blue	96257241
D-CO R MAXI 50W QPAR-CB 51 GZ10 OS CL	3.0		96257242
D-CO R MAXI 14W TC-TSE E27 OS/FACI CL	3.0		96257243
Floodlights Size 1			
D-CO F LED FLOOD1 3X1.2W WHI 3K	0.4	warm white	96257244
D-CO F LED FLOOD1 3X1.2W WHI 4K	0.4	cold white	96257245
Floodlights Size 2			
D-CO F LED FLOOD2 6X1.2W WHI 3K	0.9	warm white	96257246
D-CO F LED FLOOD2 6X1.2W WHI 4K	0.9	cold white	96257247
Connection boxes			
CON CABLE BOX 2 ENTRIES 1 EXIT IP67	0.3		96257258
CON CABLE BOX 2 ENTRIES 6 EXIT IP67	0.4		96257259

WHI - white, BLU - blue, CL - Clear glass, FR - Frosted glass, EW2 - 2 windows



THORN

Lighting people and places

Thorn Lighting Main Offices

Thorn Academy of Light

Green Lane Industrial Estate, Spennymoor
County Durham DL16 6HL, UK
Tel: (44) 1388 420 042
E-mail: academy@thornlighting.com
Website: www.thornacademyoflight.com

Australia

Thorn Lighting Pty Limited
43 Newton Road, Wetherill Park
NSW 2164
Tel: (02) 8786 6000
Fax: (02) 9612 2700
E-mail: infoaustralia@thornlighting.com
Website: www.thornlighting.com.au

Austria

Thorn Licht GmbH
Donau-City-Straße 1,
1220 Wien, Austria
Tel: (43) 1 202 66 11
Fax: (43) 1 202 66 11 82712
E-mail: office.at@thornlighting.com
Website: www.thornlighting.at

China

Thorn Lighting (Guangzhou) Operations Ltd,
No.12 Lian Yun Road, Eastern Section,
GETDD, Guangzhou 510530, China
Tel: (86) 20 3228 2706
Fax: (86) 20 3228 1777
E-mail: sales.cn@thornlighting.com

Thorn Lighting (Tianjin) Co. Ltd
332 Hongqi Road, Tianjin 300190,
China
Tel: (86) 22 8369 2303
Fax: (86) 22 8369 2302
E-mail: info.tj@thornlighting.com

Czech Republic

Thorn Lighting CS spol. s.r.o.,
Na Březince 6/930, 150 00 Praha 5
Czech Republic
Tel: (420) 224 315 252
Fax: (420) 233 326 313
E-mail: thorn.cz@thornlighting.com
Website: www.thornlighting.cz

Denmark

Thorn Lighting A/S
Kanonbådsvej 12B, Holmen,
1437 København K, Denmark
Tel: (45) 76 96 36 00
Fax: (45) 76 96 36 01
E-mail: info.dk@thornlighting.com
Website: www.thornlighting.dk

France

Thorn Europhane SA
156 Boulevard Haussmann,
Cedex 08, Paris 75379, France
Tel: (33) 1 49 53 6262
Fax: (33) 1 49 53 6240
Website: www.thornlighting.fr

Hong Kong

Thorn Lighting (Hong Kong) Limited
Unit 4301, Level 43, Tower 1,
Metropolaza, 223 Hing Fong Road,
Kwai Chung, N.T., Hong Kong
Tel: (852) 2578 4303
Fax: (852) 2887 0247
E-mail: info.hk@thornlighting.com

India

Thorn Lighting India Pvt. Ltd.
501, 5th Floor, Tanishka
Opp. Gundecha Industrial Estate
Akurli Road, Kandivali (E), Mumbai – 400 101, India
Tel: (91) 22-67839100
Fax: (91) 22-67839106
E-mail: international_sales@thornlighting.com
Website: www.thornlighting.com

International Sales

Thorn Lighting Limited
Silver Screens, Elstree Way, Borehamwood,
Hertfordshire, WD6 1FE, UK
Tel: (44) 20 8732 9800
Fax: (44) 20 8732 9819
E-mail: international_sales@thornlighting.com
Website: www.thornlighting.com

Ireland

Thorn Lighting (Ireland) Limited
Century House
Harolds Cross Road
Dublin 6W
Tel: (353) 1 4922 877
Fax: (353) 1 4922 724
E-mail: dublinsales@thornlighting.com
Website: www.thornlighting.co.uk

Italy

Thorn Europhane Spa
Via G Di Vittorio, 2, Cadriano di Granarolo,
Bologna 40057, Italy
Tel: (39) 051 763391
Fax: (39) 051 763088
E-mail: info@thornlighting.it
Website: www.thornlighting.it

New Zealand

Thorn Lighting (NZ) Ltd
399 Rosebank Road, Avondale, Auckland 1026
PO Box 71134, Rosebank, Auckland 1348
Tel: (64) 9 828 7155
Fax: (64) 9 828 7591
E-mail: info.NZ@thornlighting.com
Website: www.thornlighting.co.nz

Norway

Thorn Lighting AS
Strømsveien 344, 1081 Oslo,
Norway
Tel: (47) 22 82 07 00
Fax: (47) 22 82 07 01
E-mail: info.no@thornlighting.com
Website: www.thornlighting.no

Poland

Thorn Lighting Polska Sp.z.o.o.,
Ul. Gazowa 26A, Wrocław 50-513,
Poland
Tel: (48) 71 7833 740
Fax: (48) 71 3366 029
E-mail: thorn.pl@thornlighting.com
Website: www.thornlighting.pl

Russia

Thorn Lighting
Novoslobodskaya Str., 21, office 406
Business Center "Novoslobodskaya 21",
Moscow 127030, Russia
Tel: (7) 495 981 35 41
Fax: (7) 495 981 35 42
E-mail: office.moscow@thornlighting.com
Website: www.thornlighting.ru

Singapore

Thorn Lighting (Singapore) Pte Ltd
5 Kaki Bukit Crescent, 04-02 Koyotech
Building, 416238 Singapore
Tel: (65) 6844 5800
Fax: (65) 6745 7707
E-mail: info.sg@thornlighting.com

Sweden

Thorn Lighting AB
Industrigatan, Box 305, SE-261 23
Landskrona, Sweden
Tel: (46) 418 520 00
Fax: (46) 418 265 74
E-mail: info.se@thornlighting.com
Website: www.thornlighting.se

United Arab Emirates

Thorn Lighting Ltd Dubai
Al Shoala Building, Office 301,
Block E, Airport road, P.O. Box 1200,
Deira, Dubai, UAE
Tel: (971) 4 2940181
Fax: (971) 4 2948838
E-mail: marketing.mena@thornlighting.com
Website: www.thornlighting.com

United Kingdom

Thorn Lighting Limited
Silver Screens, Elstree Way, Borehamwood,
Hertfordshire, WD6 1FE, UK
Tel: (44) 20 8732 9800
Fax: (44) 20 8732 9801
E-mail: brochures.uk@thornlighting.com

Thorn Olympics Sports Lighting Team
Tel: 07785 251 438
E-mail: olympics.team@thornlighting.com
Website: www.thornlighting.co.uk

www.thornlighting.com

Thorn Lighting is constantly developing and improving its products. All descriptions, illustrations, drawings and specifications in this publication present only general particulars and shall not form part of any contract. The right is reserved to change specifications without prior notification or public announcement. All goods supplied by the company are supplied subject to the company's General Conditions of Sale, a copy of which is available on request. All measurements are in millimetres and weights in kilograms unless otherwise stated. Printed on Luxo Light.

Publication No: 491 (IS) Publication Date: 06/10



www.pefc.org PEFC08-36-214