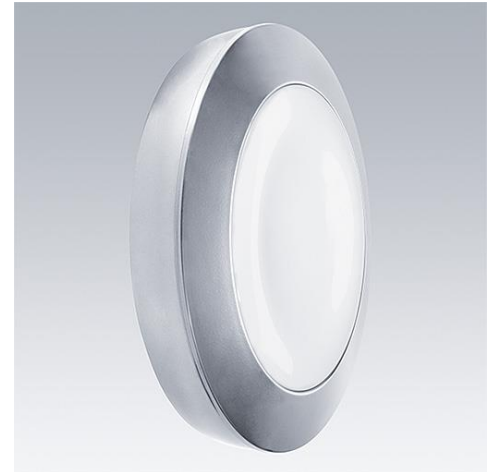


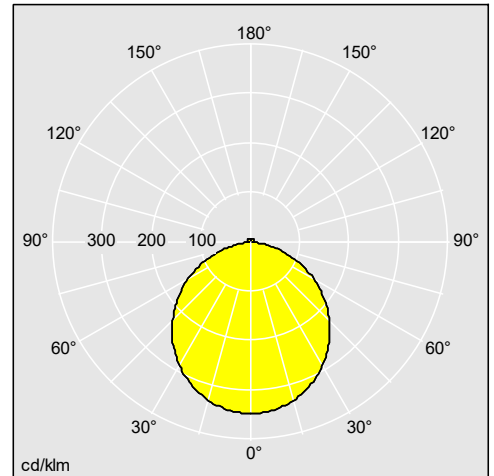
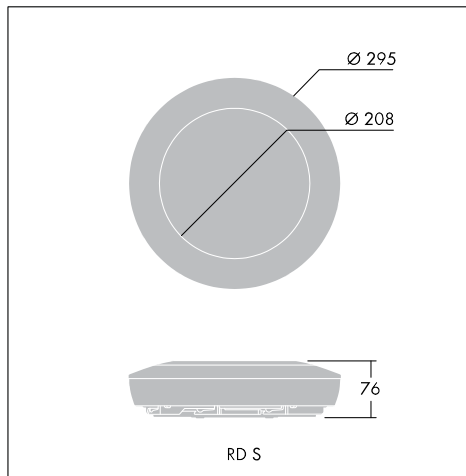
Thames

Elegant luminaire for wall or ceiling mounting with tapered bezel for floating halo effect

- Sealed to IP44 with aluminium base for strength and rigidity
- Metallic bezel available in white or silver
- Supplied with Quick Fix Bracket for safe and rapid electrical installation



Photographs, line drawings and photometric data are representative only. For specific product detail please select an individual product.



96241417

Material/Finish

Body: die-cast aluminium

Bezel: silver (RAL9006) or white (RAL9016) finish

Diffuser: opal polycarbonate

Installation/Mounting

Suitable for surface mounting on wall or ceiling for both interior and exterior use. Quick Fix Bracket is screw fixed onto mounting surface by 4 oblong holes (4.5mm x 10mm). Mains connection via 6x2x2.5mm² terminal block. 'Light Box' mechanically and electrically auto-connected to the Quick Fix Bracket. For loop wiring there are two Ø20mm cable entry holes on the Quick Fix Bracket.

Specification

To Specify state:

Unique and distinctive circular luminaire for 1000lm LED, with an acute angular steel bezel 'floating halo'. Concave opal polycarbonate diffuser mounted on a die-cast aluminium body, with lamp and electronic, integral emergency gear, connected to Quick Fix Bracket.

As Thorn Thames.