

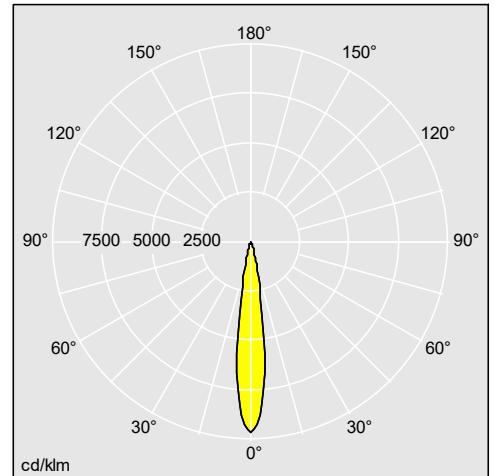
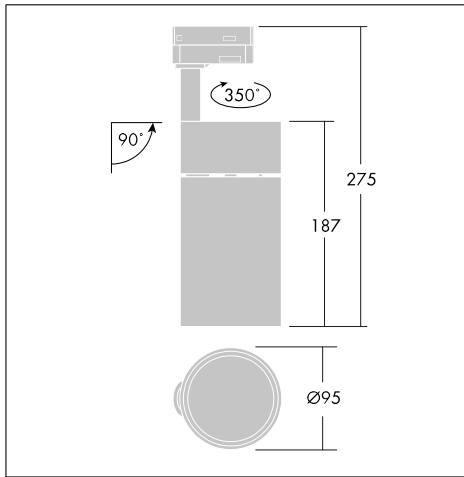
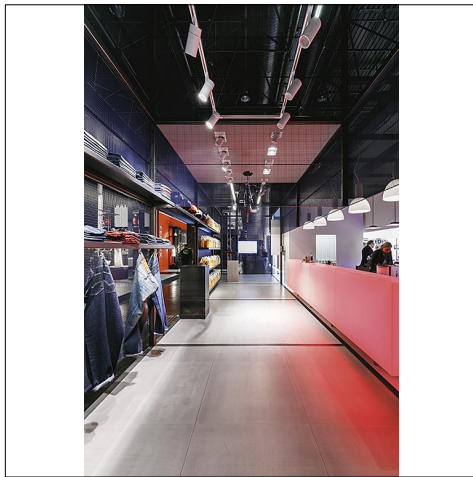
Tonic Spot

Cost effective CRI90 LED spotlight range with integrated multi-voltage driver for worldwide use

- The pure and simple shape of Tonic makes it suitable for use across global application types. Its design integrates with a wide range of environments and architectural styles
- LED spotlight family with global certifications (CE, UL, CCC, RCM, EAC) and a world-wide mains input voltage range of 100-240V
- GA69 certified 3 phase track connection
- The highly efficient optical system on the front also protects the LED light source and is easy to clean



Photographs, line drawings and photometric data are representative only. For specific product detail please select an individual product.



96665970

Material/Finish

Body: aluminium, microstructured white or black
Driver box: PC, microstructured white or black

Installation/Mounting

Suitable for 3 phase tracks.

Track mounting: mechanical and electrical track connection is made using the track adapter, which attaches quickly to the track. Stable clamping points with a simple clockwise turn of the fixing lever. Select the desired circuit (1, 2 or 3) using the selector on the top of the trackbox. Rotation 0° - 350°, tilt 0° - 90° Interchangeable lenses with click-in front ring fixation.

Specification

To specify state:

LED spotlight with colour rendering Ra >90 and integrated driver for use with 3-phase tracks (Thorn Supertrack2). Available in 3000K and 4000K with four different beam shapes. Chromaticity tolerance (MacAdam ellipse): 3. Lifetime performance: 50000 h L70; world wide mains input voltage range 100-240V at 50/60Hz; anti-glare ring in housing color; highly efficient and iridescence-free faceted lenses; lenses designed to be interchangeable.

As Thorn Tonic Spot.