

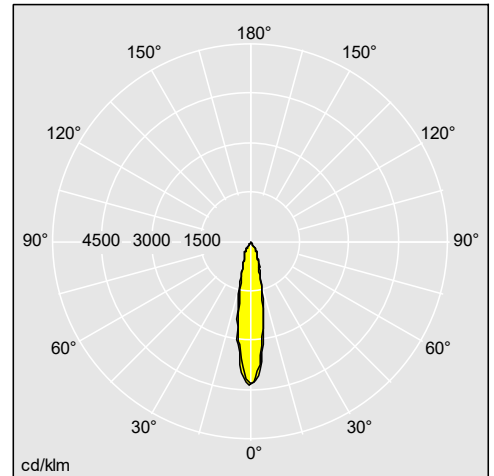
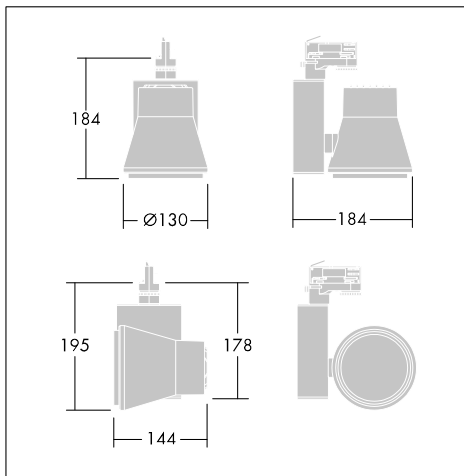
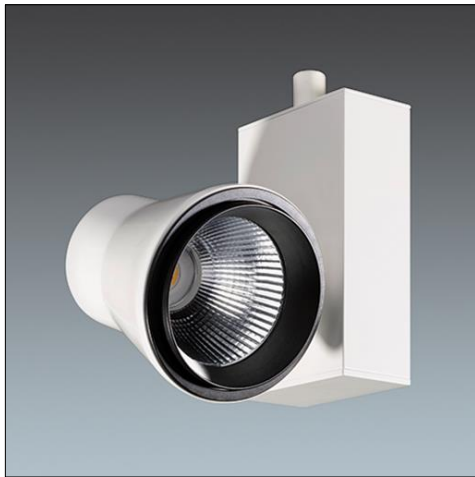
Virgule LED

Efficient LED spotlight range with interchangeable reflectors for spot and wide flood beam angles

- The unobtrusive design features complement all environments and integrates well into a variety of architectural surroundings
- Easy to clean transparent glass on the front protects the LED light source
- Choice of surface mounting or connecting to 3 circuit track
- Easy to install interchangeable reflectors with simple bayonet function



Photographs, line drawings and photometric data are representative only. For specific product detail please select an individual product.



96644507

Material/Finish

Body: aluminium painted, white or black
Trackbox: aluminium painted, white or black
Reflector: anodised aluminium, faceted

Installation/Mounting

Suitable for 3 circuit multiadapter or surface mounting. Track mounting: mechanical and electrical track connection is made using the track multiadapter, which locates quickly to the track stable clamping points with a simple clockwise turn of the fixing lever. Select the desired circuit (1, 2 or 3) using the selector on the top of the trackbox before installing onto the track. Rotation 0° - 355°, tilt 0° - 180° Interchangeable reflectors easily mounted by tool-free bayonet function.

Specification

To specify state:

LED spotlight optimised for efficient accent lighting for shops and showrooms; innovative thermal design for passive cooling; luminaire with 3-phase universal adapter; Colour rendering $R_a > 80$; chromaticity tolerance (MacAdam ellipse) 3; reflector anodized with rotationally symmetrical light beam; lifetime: 50 000 hours L70; UVA-free and IR-free light; mains voltage: 220-240V/ 50/60Hz; spotlight can rotate through 355° and tilt through 180°; spotlight housing made of die-cast aluminium, surface finish: painted white or black; glare reduction via front ring of polycarbonate, black; faceted specular reflector made of polycarbonate (PC) highly reflective aluminium anodised finish; standard 20° beam angle, reflector designed to be interchangeable and retrofitted with 10°/12° spot beam or 40° wide flood beam.

As Thorn Virgule LED.