

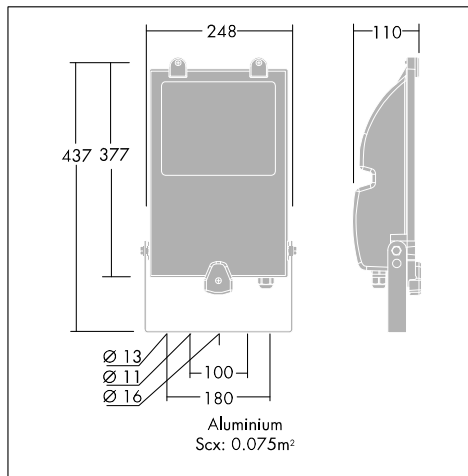
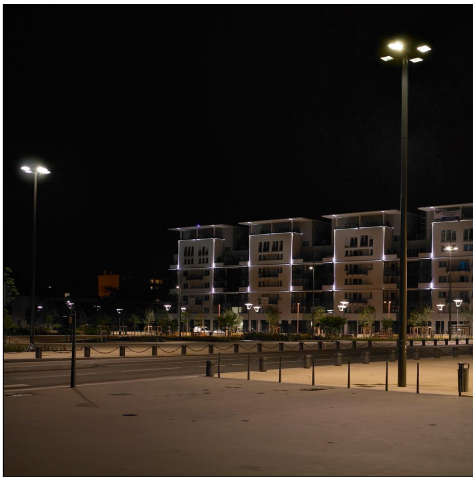
Sonpak LX 7-15

A range of easy to install performance floodlights supplied complete with lamp.

- Asymmetric reflector
- Easy to install with drop down front glass and cable entry.
- Vandal resistant option with polypropylene body and high impact clear polycarbonate visor. Exterior optical attachments available



Photographs, line drawings and photometric data are representative only. For specific product detail please select an individual product.



Material/Finish

Body: polypropylene, black colour, reinforced with fibreglass and mineral loads. Resistant to atmospheric, chemical and corrosive agents such as: gas, salty fogs, pollution, etc. or die-cast aluminium alloy UNI EN 46100, painted with polyester powders, RAL9005 to align with size 2.

Diffuser / lens : self-extinguishing polycarbonate or flat toughened glass, thickness 5mm.

Reflector: Hammered aluminium sheet P-AL 99,85% alloy 1060, polished, oxidized and anodised, suitable thickness.

Screws: Chrome-galvanised steel.

Cable gland: M20 cable gland Ø9-11 mm.

Gasket: anti-ageing rubber,

Terminal block: Screw type connection terminal, terminal section 4.0 mm².

Fixing of supply cable: plastic clamp for cables diameter 9-11mm.

Electrical wiring: supply unit is composed by magnetic ballast, ignitor complying with lamp type, power correction capacitor, which is fixed to the gear tray.

Bracket : in steel and (black colour) RAL 9005, can be fixed through M6 screws, supplied with graduated scale for floodlight aiming.

Installation/Mounting

All products have one cable glanded entry for Ø9-11mm cable with 3 pole terminal blocks. LX7-15 stirrup fixed by single bolt through Ø16mm hole.

Two additional Ø11mm fixing holes at 100mm centres, with a further two Ø13mm fixing holes at 180mm centres. Cable gland and stirrup already mounted on body.

Sonpak LX 7-15

Specification

To specify state:

Enclosed black polypropylene floodlight with polycarbonate visor, integral control gear with or without photocell, asymmetrical reflector for 70-150W HIT-DE and HSE-I lamps. Sealed to IP65.

As Thorn Sonpak LX7-15