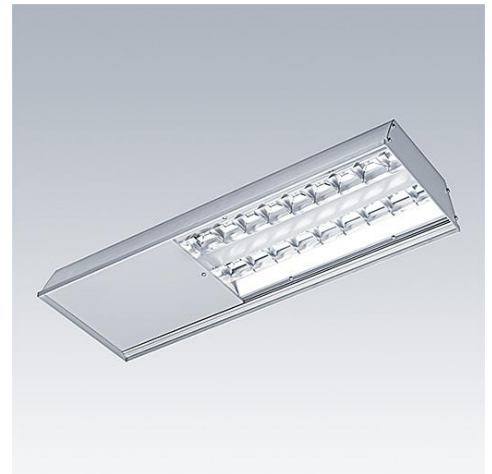


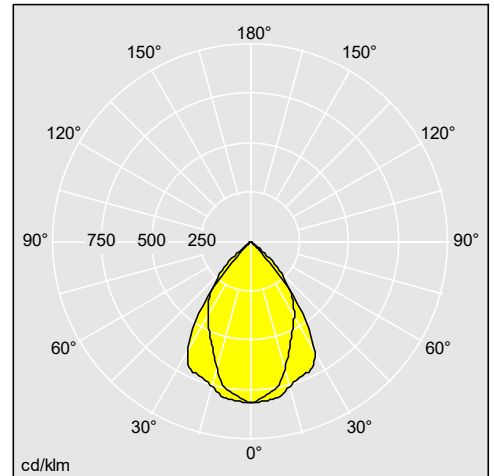
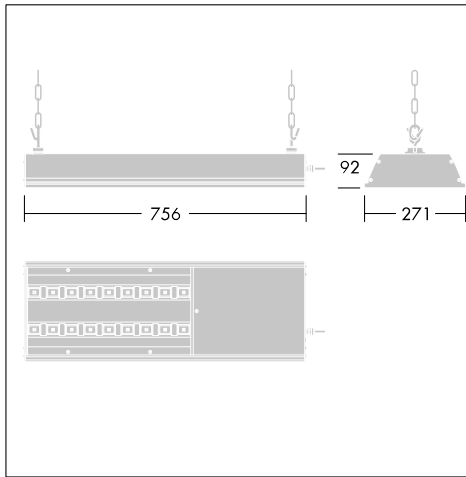
HiPak Pro

Extremely efficient, robust and low maintenance LED High Bay

- Highly efficient operation of up to 160lm/W for significant energy savings compared to traditional HID high bays
- Dedicated optics for precise light control for racking, open areas and sports applications
- Integral PIR sensor and DALI dimmable to maximise energy savings
- On board thermal management system ensures LED performance and lifetime



Photographs, line drawings and photometric data are representative only. For specific product detail please select an individual product.



96642946

Material/Finish

Housing: anodised aluminium extrusion with steel powder coated end caps (close to RAL 9006).
Reflector: high grade MIRO 5 aluminium with plastic front cover.

Installation/Mounting

All mounting kits to be ordered separately and clip tool free onto the back of the body. Chain suspension (96241507), cable tray via 20mm holes (96241497), catenary suspension (96241515). To mechanically join two luminaires together both a mounting kit (options from above) and accessory 96241508 need to be ordered. For sports applications an additional bracket should be ordered (96628086) to ensure security upon impact. A 2.5mm² piano key terminal block is accessed via a sliding gear tray cover offering two 20mm cable entries. Integral sensor versions offer movement detection as well as daylight control and can be mounted up to 16m heights. Hand held programmer (96627935) can be used from the floor to customise sensor settings. Emergency versions suitable for maximum ambient temperature up to 30°C.

Specification

To specify state:

LED high bay luminaire made from extruded anodised aluminium, with a choice of open area, rack or asymmetric optic, DALI with sensor or emergency options as standard, LEDs supplied offering 14,000 and 19,000 lumen output, 4000K, 50,000 hours L80, up to 160lm/W, sliding gear tray cover for quick terminal block access.

As Thorn HiPak Pro LED.