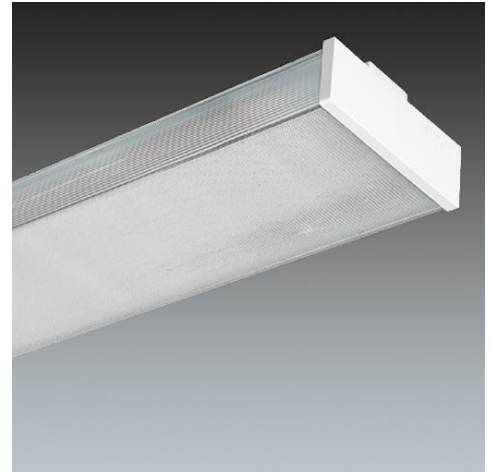


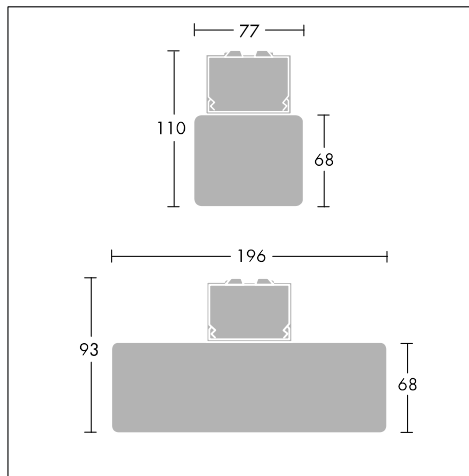
## Popular Range Attachments

### Economy diffusers and reflectors for use with original Popular Range battens

- For cost conscious schemes
- Diffusers retained by spring loaded end caps for quick and simple maintenance
- A wide beam reflector to provide wider luminaire spacing
- A narrow beam reflector where focussed directional light is needed



*Photographs, line drawings and photometric data are representative only. For specific product detail please select an individual product.*



### Material/Finish

Diffusers: UV stabilised styrene with white ABS end caps

Reflectors: steel with precoated high reflectivity white finish

### Installation/Mounting

Diffusers attach to the batten using spring loaded end caps. All clips and end caps supplied. Allow a minimum of 50 mm spacing between end caps of adjacent fittings. Reflectors attach to the batten with mounting kits (supplied).

### Specification

To specify state:

Diffuser in extruded opal polystyrene with external reeding/prismatic controller in clear extruded polystyrene with finely embossed prismatic pattern in base.

As Thorn Popular Range Economy Diffuser

To specify state:

Open ended, trough reflector in white stove enamelled steel with optional wire guard.

As Thorn Popular range Economy Reflector

To specify state:

Rack lighting reflector in high reflectivity polished aluminium.

As Thorn Popular Range Rack Lighting Reflector

To specify state:

Single side angled reflector in white stove enamelled steel.

As Thorn Popular Range Asymmetric Reflector