

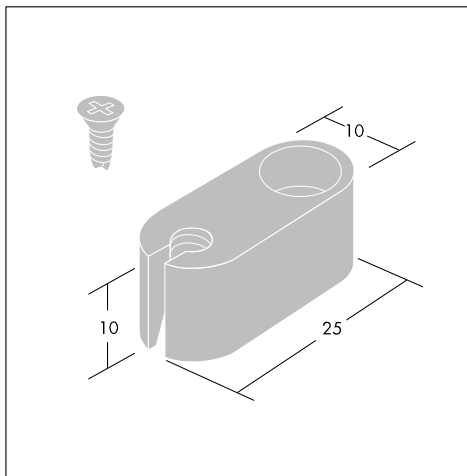
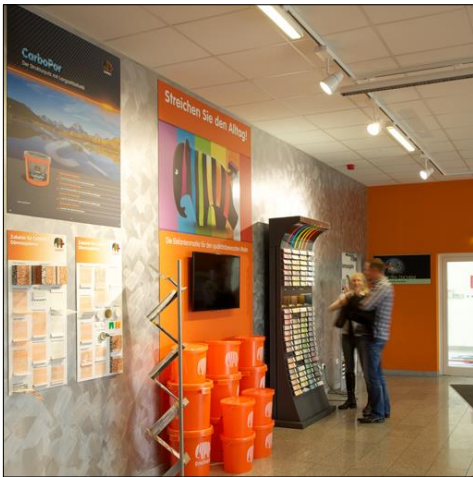
Supertrack 2

A versatile 3-circuit lighting track system, with a full range of power feeds, connectors, couplers and suspensions

- 16A track units in high quality extruded aluminium with three separately switchable circuits. Choice of mounting: surface or suspended, plus flanged option for suspended ceilings.
- Compatible with universal adaptors provided on all Thorn mains voltage spotlights.
- Extensive selection of power feed connector options allows alternative to live-end feed
- Versatile suspension system features height adjustment and rapid fixing to suspension clamps



Photographs, line drawings and photometric data are representative only. For specific product detail please select an individual product.



Material/Finish

Track: extruded aluminium section with white or black finish, housing copper conductors
Connectors: black or white polycarbonate

Installation/Mounting

Pendant Tube Suspension kit : Provides rigid support up to 1m from ceiling and can be cut to length on site Cable (up to 5 x 1.5mm²) connects directly to the feed through the tube. After the central nut is removed, the tube locates into the suspension clamp via a twist and lock mechanism. Supplied with ceiling rose.

Threaded Rod Suspension kit : With ceiling rose. Mechanical kit providing rigid suspension up to 1m from the ceiling.

Screws directly into the suspension clamp Can be cut to length on site.

Wire Suspension kit : Mechanical kit. Includes a height adjustable lock. The versatile suspension dome allows you to suspend track from a sloping surface or from a point not directly above the point of suspension.

Track Surface Mounting kits : Used for surface mounting on uneven ceilings. Screws and wall plugs included.

T-bar clips : For use on 20mm T sections and above. There is also a push out component on the track to allow the screw to be fastened into the unit.

Recessed clips : Used to attach recessed track to the internal grid of a suspended ceiling (used in connection with MRE track unit and MRE connector covers to support the ceiling tiles).

Specification

To specify state:

Three-circuit extruded aluminium track system in white/natural/black finish with wide range of black/white feeds, connectors and couplers, for suspended/surface/recessed mounting. 3 circuit AC terminal 220v-400v: max installed load 3x3680 = 11,040W; fuse protection 3x16A feed cable min 5x1.5mm².

As Thorn Supertrack 2