

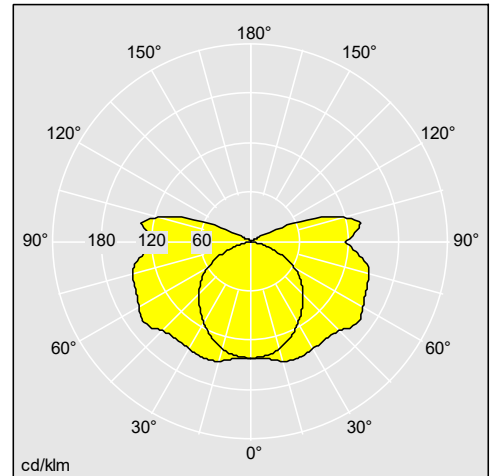
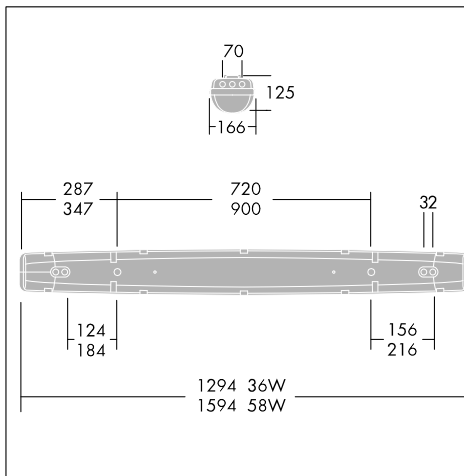
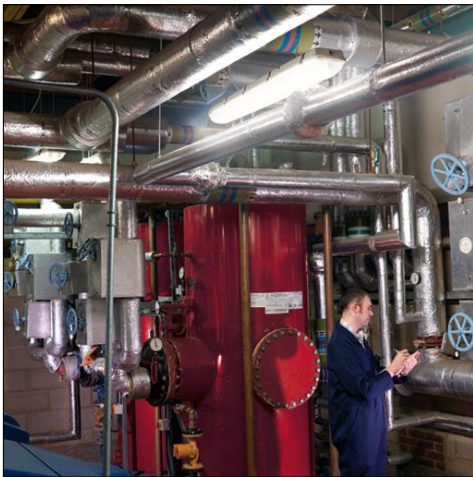
HeatForce

High performance IP65 proof luminaire that performs in high ambient temperature locations

- Robust industrial ballast ensures reliable operation up to 65°C (36W) or 55°C (58W)
- Deep channel single pour gasket ensures IP65 seal
- For quick and easy maintenance, gear tray simply hangs from internal clips



Photographs, line drawings and photometric data are representative only. For specific product detail please select an individual product.



96234628

Material/Finish

Canopy: glass-fibre reinforced polyester
 Diffuser: polycarbonate with linear prisms
 Gasket: expanded polyurethane
 Toggles: stainless steel
 Gear tray: steel, white enamelled finish

Installation/Mounting

Cable entry positions at the back and each end of the fitting. Supplied with IP65 grommet. Stainless steel quick-fix brackets supplied with each luminaire. Stainless steel toggles are captive in the canopy to prevent loss during maintenance, and steel gear tray is retained by spring latches. BESA box and conduit mounting, chain suspension and catenary suspension kits, plus through wire kits are all available. LSOH cables as standard. If through wire kits are used the maximum ambient temperature is reduced (58W=47°C / 36W=57°C). Suitable for all indoor plus external 'under cover only' applications.

Specification

To specify state:

High performance, IP65, dust and moisture proof impact resistant luminaire with GRP canopy, polycarbonate diffuser and stainless steel toggles. 36-58W T26 (T8) linear fluorescent lamps, industrial ballast for reliable operation up to 65°C and up to 50,000 hour life at maximum temperature.

As Thorn HeatForce.