

THORN

Voyager E

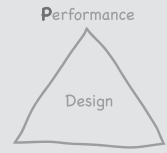
Competitive emergency lighting
bulkhead and exit sign



Voyager E Bulkhead

Economical escape route and anti-panic area lighting

- IP65 Bulkhead supplied complete with lamp and self adhesive legend kit
- Suitable for escape route and anti-panic (open area) lighting applications
- 3 hour maintained and non-maintained versions
- Durable polycarbonate construction



Comfort Efficiency

Performance:

- Optic allows wide luminaire spacing
- 3-hour maintained and non-maintained

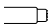
Efficiency:

- IP65 protection
- Easy fix
- Hinged gear tray for easy internal access

Comfort:

- High brightness green LED battery charging indicator for easy viewing
- Ease of mind emergency lighting

Lamps

 8W, T16 (FDH)
3000K linear fluorescent.
Cap: G5

Materials/Finish

Body: polycarbonate
(colour similar to RAL 9003)

Diffuser: polycarbonate,
prismatic

Gear tray: mild steel
(colour similar to RAL 9003)


Installation/ Mounting

Surface with 20mm cable entry each end and rear.
Drill points for mounting on recessed ceiling or wall boxes including BESA. 3/4 way terminal block, 2x1.5mm² or 1x4 mm² capacity.)



Standard

Designed and manufactured to comply with EN 60598.2.22

 Class I electrical
850° fire retardant

   IP65   CE



Voyager E Bulkhead
Lamps: 8W T16, Maintained
DLOR: 0.7 LOR: 0.84
LMC (Luminaire Maint. Category): E

Escape route					
Min illum (lux)	Mounting height (m)	Max spacing (m)			
		Centre to end		Between centres	
1.0	trans 3	1.05	5.00		
	axial 2.5	1.4	4.30		
1.0	axial 3	1.05	4.20		
Open area					
Min illum (lux)	Mounting height (m)	Max spacing (m)			
		Centre to end		Between centres	
2.5	1.85	1.85	6.60	6.2	
0.5	3	1.8	1.8	6.90	6.5
	3.5	1.65	1.65	7.10	6.7

Ordering Guide Supplied complete with lamp and legends.

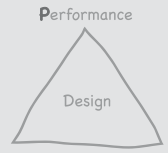
Description	Ilcos code	Socket	Weight (kg)	SAP code	New UK Cat No.	Existing UK Cat No.
VOYAGER E BULKHEAD E3M	FDH	G5	1.27	96502952	EVB3M	EVWB3M
VOYAGER E BULKHEAD E3NM	FDH	G5	0.9	96502953	EVB3NM	EVWB3NM

E3M - maintained, E3NM - non-maintained

Voyager E Exit Sign

Economical escape route signage

- Suitable for escape route and anti-panic (open area) lighting applications
- Integrated door illumination panel
- Supplied complete with lamp and three legend plates
- Strong, durable construction
- 3 hour duration



Comfort Efficiency

Performance:

- Optic allows wide luminaire spacing
- 3-hour maintained and non-maintained

Efficiency:

- IP65 protection
- Easy fix
- Hinged gear tray for easy internal access

Comfort:

- High brightness green LED battery charging indicator for easy viewing
- Ease of mind emergency lighting

Lamps

□= 8W, T16 (FDH)
3000K linear fluorescent.
Cap: G5

Materials/Finish

Body/Gear Tray: mild steel (colour similar to RAL 9003)
Panel: polycarbonate (colour similar to RAL 9003)

Installation/ Mounting

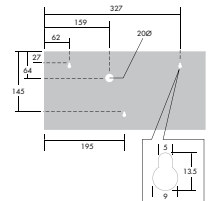
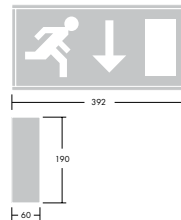
Wall mounted with cable
20mm cable entry top
and rear.
Screw fixings (3) on rear.
3 way terminal block
2x1.5mm² or 1x4 mm²
capacity.



Standard

Designed and manufactured to comply with EN 60598.2.22

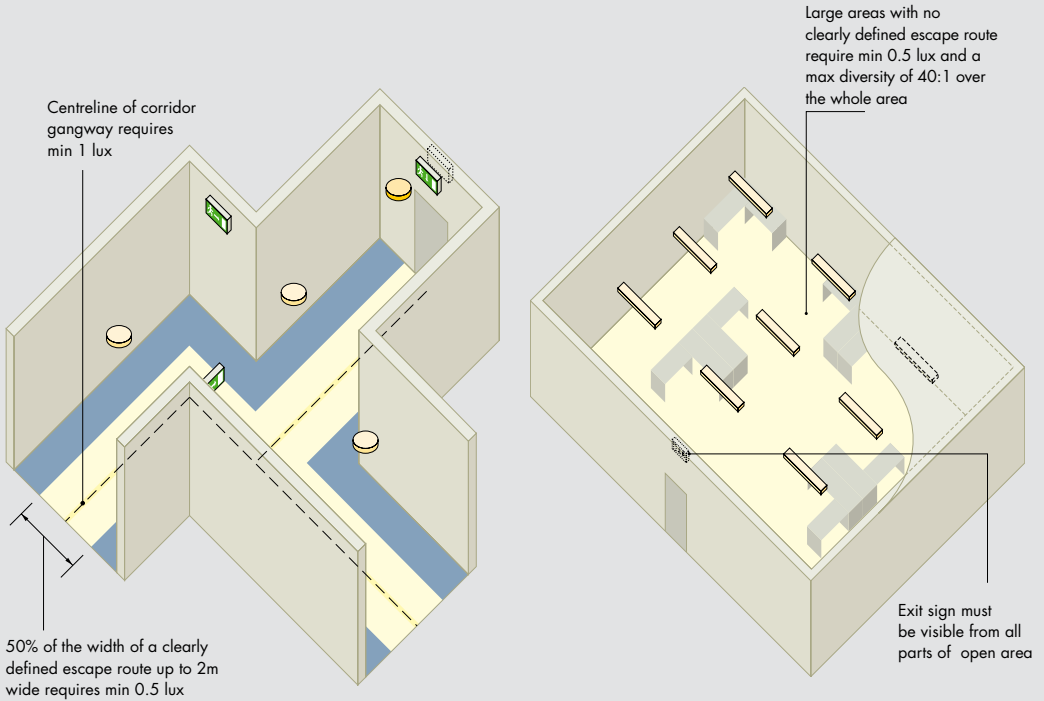
⊕ Class I electrical
850° fire retardant
IP20



Ordering Guide Supplied complete with lamp and legends.

Description	Ilcos code	Socket	Weight (kg)	SAP code	New UK Cat No.	Existing UK Cat No.
VOYAGER E EXIT E3M	FDH	G5	2.6	96502954	EVE3M	EEX3MMK13
E3M - maintained						

Where to use Voyager E Bulkhead and Voyager E Exit



Head Office

Thorn Lighting Limited
Silver Screens, Elstree Way, Borehamwood,
Hertfordshire, WD6 1FE
Tel: 020 8732 9800
Fax: 020 8732 9801
E-mail: brochures@thornlight.com

www.thornlighting.co.uk

Thorn Lighting is constantly developing and improving its products. All descriptions, illustrations, drawings and specifications in this publication present only general particulars and shall not form part of any contract. The right is reserved to change specifications without prior notification or public announcement. All goods supplied by the company are supplied subject to the company's General Conditions of Sale, a copy of which is available on request. All measurements are in millimetres and weights in kilograms unless otherwise stated.

Publication No: 387(GB) Publication Date: 05/07
SAP Code: 96503229

