

# THORN

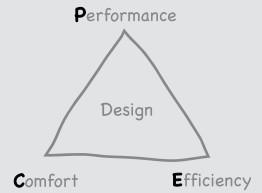
# Sonpak LX

A new range of easy to install  
general purpose floodlights  
supplied complete with lamp



Sonpak, our best selling general purpose floodlight has been completely redesigned –  
**Sonpak LX!**

- **Improved** photometric performance
- Smaller, lighter and **easier to install**
- **Streamlined shape** to reduce windage
- **Supplied complete** with a choice of high pressure sodium or metal halide lamps
- **Two sizes:** 70W and 150/250/400W



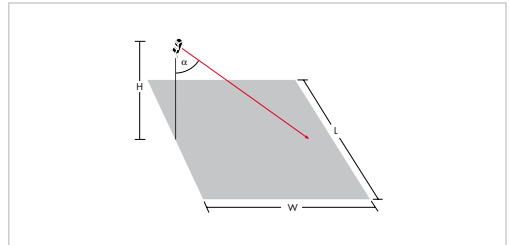
**Performance:** Improved light distribution

**Efficiency:** European quality level of components

**Comfort:** Ease of installation, weight reduced



A new, efficient discharge floodlight for security applications, building facades and perimeters, car parks, loading bays and precincts



Sonpak LX7 A/S	
Lamp	HSE-I
Wattage	70W
Mounting height (H)	5m
Width (W) x Length (L)	10x10m
Average horizontal illuminance	17
Uniformity (minimum/average)	0.1
Aiming angle ( $\alpha$ )	20°

Sonpak LX7 A/S	
Lamp	HSE-I
Wattage	70W
Mounting height (H)	7m
Width (W) x Length (L)	15x15m
Average horizontal illuminance	9
Uniformity (minimum/average)	0.1
Aiming angle ( $\alpha$ )	20°

Sonpak LX15/25/40 A/S		
Lamp	HST	HST
Wattage	150W	150W
Mounting height (H)	7m	10m
Width (W) x Length (L)	20x20m	25x20m
Average horizontal illuminance	18	14
Uniformity (minimum/average)	0.1	0.1
Aiming angle ( $\alpha$ )	25°	10°

Sonpak LX15/25/40 A/S		
Lamp	HST	HST
Wattage	250W	400W
Mounting height (H)	12m	15m
Width (W) x Length (L)	30x30m	35x25m
Average horizontal illuminance	14	25
Uniformity (minimum/average)	0.2	0.1
Aiming angle ( $\alpha$ )	30°	15°

# Sonpak LX7

A general purpose floodlight supplied with a 70W high pressure sodium or metal halide lamp

- Tough, polypropylene body
- Asymmetrical reflector
- Vandal resistant construction with high impact clear polycarbonate visor
- Integral control gear
- Attachments available
- Sealed to IP65
- Photocell versions available

## Applications

Suitable for small area applications such as yards, car parks, building façades, perimeters and gardens

## Lamps

☉ HSE-I (SE-I) 70W high pressure sodium.

Cap: E27

☉ HIT-DE (MD) 70W metal halide. Cap: RX7s



Compact design



Easy access via hinged visor



Easy installation of attachments

## Materials/Finish

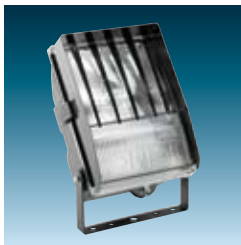
Body: polypropylene, finished black  
 Visor: polycarbonate  
 Screws: chrome galvanised steel  
 Reflector: hammered aluminium  
 Gasket: anti-ageing rubber  
 Stirrup: mild steel painted black

## Installation/ Mounting

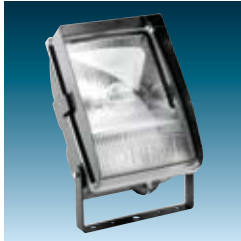
All products have one cable glanded entry for 9-11 mm o/d cable with 3 pole terminal block for 3 x 10mm<sup>2</sup>. Stirrup fixed by single bolt through 16mmØ hole. Two additional 11mmØ fixing holes at 100mm centres, with a further two 13mmØ fixing holes at 180mm centres.

## Standards

Designed and manufactured to comply with EN 60598.  
 ⚡ Class I Electrical.  
 960°C fire retardant.  
 Ta Max. +25°C.  
 IK08 ⚡ ⚡ ⚡ IP65 CE



Louvre attachment



Visor attachment



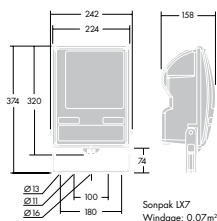
Spigot accessory Ø76mm (LX7/15/25/40)

## Ordering Guide

Supplied complete with lamp

Description	Ilcos Code	Socket	Wt (kg)	SAP code	Cat. No.
<b>Sonpak LX7</b>					
SONPAK LX 70W 240V HSE-I/E27/220 A/S	SE-I	E27	2.9	96232640	OTX70
SONPAK LX 70W 240V HIT-DE/RX7S/620 A/S	MD	RX7S	2.9	96232642	OTXMH70
<b>Sonpak LX7 with Photocell</b>					
SONPAK LX 70W 240V HSE-I/E27 A/S P	SE-I	E27	2.9	96232641	OTXP70
SONPAK LX 70W 240V HIT-DE/RX7S A/S P	MD	RX7S	2.9	96232643	OTXPMH70
<b>Attachments</b>					
SONPAK LX 70W LV		LOUVRE	0.8	96250690	OTX70L
SONPAK LX 70W VS		VISOR	1.0	96250691	OTX70V
SONPAK LX MA 76		SPIGOT	2.0	96250695	OTX76S

A/S - Asymmetrical, P - Photocell



# Sonpak LX15/25/40


A general purpose floodlight supplied with a 150, 250 or 400W high pressure sodium or metal halide lamp

- Easy to install with drop down front glass and cable entry
- Robust die-cast aluminium body
- Asymmetrical reflector
- Toughened front glass
- Integral control gear
- Attachments available
- Sealed to IP65


## Applications

Suitable for large area applications such as loading bays, town squares, precincts, parks or large building façades

## Lamps

 HST (ST) 150-400W high pressure sodium.

Cap: E40

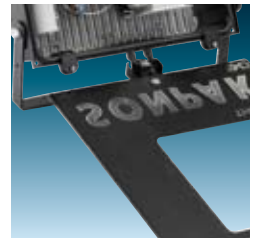
 HIT (MT) 150-400W metal halide. Cap: E40



Simple aiming device



Easy installation of attachments



Easy access via hinged front glass

## Materials/Finish

Body: die-cast aluminium, painted black  
 Glass: 5mm flat toughened  
 Screws: chrome galvanised steel, stainless steel for external  
 Reflector: aluminium sheet  
 Gasket: foamed silicone  
 Stirrup: mild steel painted black

## Installation/ Mounting

All products have one cable glanded entry for 9-11mm  $\phi$ /d cable with 3 pole terminal block for 3 x 10mm<sup>2</sup>. Stirrup fixed by single bolt through 21mm $\phi$  hole. Two additional 13mm $\phi$  fixing holes at 250mm centres.

## Standards

Designed and manufactured to comply with EN 60598.  
 ⚡ Class I Electrical.  
 960°C fire retardant.  
 Ta Max. +25°C.  
 IK06 ⚡ ⚡ ⚡ IP65 CE

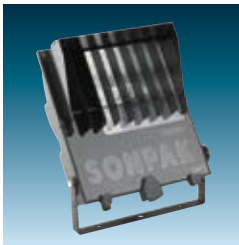
## Ordering Guide Supplied complete with lamp

Description	Ilcos Code	Socket (Kg)	Wt	SAP code	Cat. No.
<b>Sonpak LX15</b>					
SONPAK LX 150W 240V HIT/E40/745 A/S	MT	E40	7.6	96232645	OTXMH150
SONPAK LX 150W 240V HST/E40/220 A/S	ST	E40	7.6	96232644	OTX150
<b>Sonpak LX25</b>					
SONPAK LX 250W 240V HIT/E40/745 A/S	MT	E40	7.2	96232647	OTXMH250
SONPAK LX 250W 240V HST/E40/220 A/S	ST	E40	7.8	96232646	OTX250
<b>Sonpak LX40</b>					
SONPAK LX 400W 240V HIT/E40/742 A/S	MT	E40	7.8	96232649	OTXMH400
SONPAK LX 400W 240V HST/E40/220 A/S	ST	E40	9.0	96232648	OTX400
<b>Attachments</b>					
SONPAK LX 150/250/400W LV	LOUVRE		1.2	96250692	OTX250L
SONPAK LX 150/250/400W VS	VISOR		1.3	96250693	OTX250V
SONPAK LX 150/250/400W WG	WIRE GUARD		1.0	96250694	OTX250W
SONPAK LX MA 76	SPIGOT		2.0	96250695	OTX76S

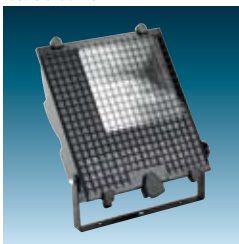
A/S - Asymmetrical



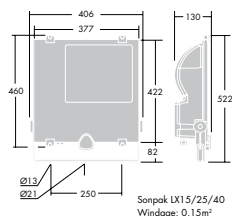
Visor attachment



Louvre attachment



Wire guard attachment





**Head Office**

Thorn Lighting Limited  
Silver Screens, Elstree Way, Borehamwood,  
Hertfordshire, WD6 1FE  
Tel: 020 8732 9800  
Fax: 020 8732 9801  
E-mail: brochures@thornlight.com

**[www.thornlighting.co.uk](http://www.thornlighting.co.uk)**



Thorn Lighting is constantly developing and improving its products. All descriptions, illustrations, drawings and specifications in this publication present only general particulars and shall not form part of any contract. The right is reserved to change specifications without prior notification or public announcement. All goods supplied by the company are supplied subject to the company's General Conditions of Sale, a copy of which is available on request. All measurements are in millimetres and weights in kilograms unless otherwise stated.

**Publication No: 393(UK) Publication Date: 11/06**