

# THORN

## EyeKon

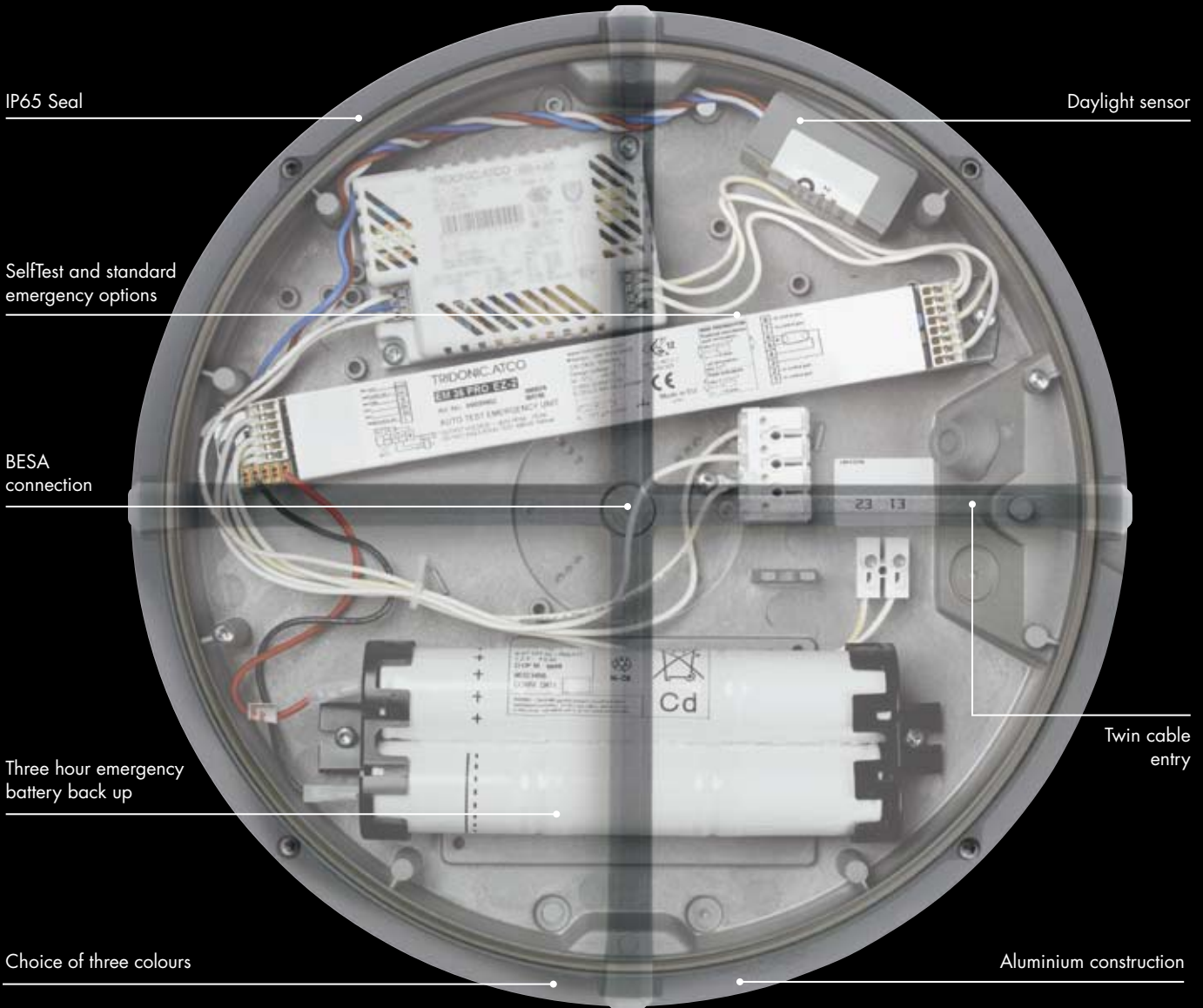
A range of robust, vandal resistant bulkheads designed for outdoor applications





# EyeKon

Offering a choice of four designs, two sizes and three colour options to suit every exterior lighting scheme



Tamper resistant screws



Robust double wall conceals cable from view (also with cable clamp)



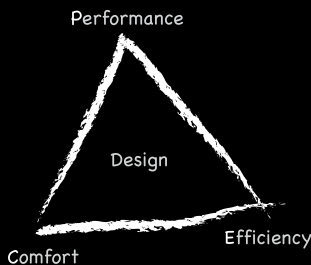
Tough polycarbonate opal diffuser (clear diffuser option)



Energy saving with an integral daylight sensing photocell

# Performance, Efficiency and Comfort (PEC) – for a better lit environment

EyeKon evokes the spirit of Thorn Lighting's dynamic, results-orientated PEC programme



The programme is based on the principle that Performance, Efficiency and Comfort determine the effectiveness of lighting, its impact on the people using it, and its impact on the natural environment. EyeKon delivers the right light on the right place at the right time.



**Performance:** Providing the best visual effectiveness

- Engineered for improved visibility, EyeKon supplies sufficient light to provide orientation and direction for security after dark. EyeKon has been designed to spread light sideways, allowing fittings to be widely spaced without leaving dark areas between fittings. The optics also distribute light in front of the luminaire to illuminate paths and thoroughfares
- Good modelling - enhances human features and reveals patterns in surfaces and objects
- Optical control options reduce glare to a minimum
- Good colour rendering for pedestrians, improving visual perception

**Efficiency:** Conserving energy and effort, reducing CO<sub>2</sub> emissions and waste, providing lighting that is practical and efficient to install, operate and maintain.

- Electronic ballast for reduced power consumption and longer lamp life
- Visor version reduces upward light, which helps limit obtrusive light and improves the efficiency of the installation
- Photocell ensures luminaires are turned off when not needed. This will reduce power demand, conserve energy and reduce global warming. The installation will be more economic due to reduced running costs

- Integrated emergency lighting variants that allow remote monitoring of the luminaire status via a PC ensure timely maintenance and compliance with legal requirements for record keeping
- Easy to install and service, reducing the cost of ownership
- Designed to be fit for purpose, EyeKon is sealed to IP65 (dust-tight and jet-proof), is supplied with tamper resistant screws, and has an impact rating of IK10, meaning it is robust and impact resistant
- Sustainable materials - body and bezel of LM6 aluminium

**Comfort:** giving people satisfaction and stimulation

- In open areas when mounted at its optimum mounting height good vertical light is delivered onto adjacent areas, helping to create a feeling of general safety and well-being. Models can also be used to guide, attract, warm and invite
- Choice of four modern minimalist designs to compliment and preserve the character of the architecture, making it a pleasant space
- Halo visor contributes with a soft halo glow that creates a warm, friendly environment
- The use of high frequency control gear provides flicker free light and prevents stress to the visual system
- Bollard use brings light down to the human level, creating intimate pools of light on pavements

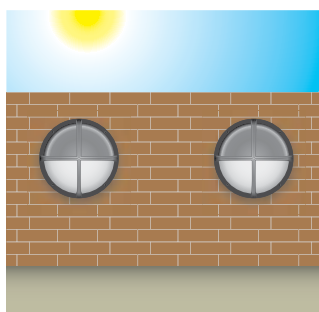
# Energy saving with EyeKon



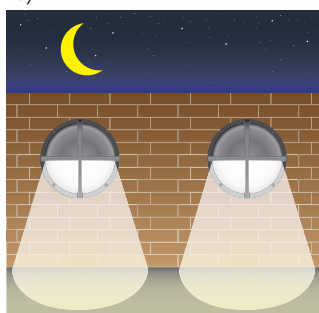
## Energy saving with daylight sensing

In a world where we all strive to save energy and the environment, the new EyeKon range helps you to save money at the same time as cutting carbon emissions.

Lighting accounts for around twenty per cent of a companies' energy costs, so anything that can help reduce those costs is a great benefit. One response is to ensure that luminaires are not illuminated during daylight hours. The EyeKon range can be supplied with an integrated sensor that will automatically detect the daylight and switch off the luminaire, helping to protect the planet and reduce electricity bills. There are photocell variants with emergency available as standard.



Day\*



Night\*

\*Not to scale for illustration only

EyeKon can be supplied with an option of a daylight sensor fitted as standard. Helping save energy costs by automatically switching the luminaire on or off depending on the ambient light levels.

## Emergency Lighting

European safety standards specify that emergency lighting is required in all public places to enable a safe exit if the normal lighting fails. Emergency lighting has to provide sufficient lighting to aid safe evacuation.

EyeKon offers a number of emergency lighting options that are integrated into the luminaire. This self-contained approach improves the appearance of the location while reducing installation cost and complexity.

The options support integrated emergency operation for three hours, allowing full continuity of emergency lighting after an evacuation. SelfTest emergency lighting options include a diagnostic microprocessor that will automatically perform function tests and duration tests. It monitors and automatically tests emergency luminaires at specified intervals, displaying the status of each unit using a two-colour LED. As a result, any problems with battery and lamp health are detected early, without requiring manual inspection.





## Applications

EyeKon is suitable for a wide range of outdoor applications and can be fitted to the ceiling, wall or mounted into a bollard

### Typical applications:

- Retail and commercial buildings
- Schools and universities
- Hospitals
- Sports and leisure centres
- Car parks
- Forecourts
- Entrances
- Amenity lighting
- Gardens and parks
- Building perimeters
- Emergency exit routes



< Visor bollard mounted, anthracite

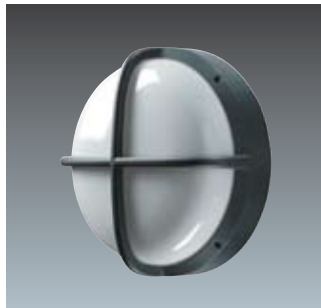




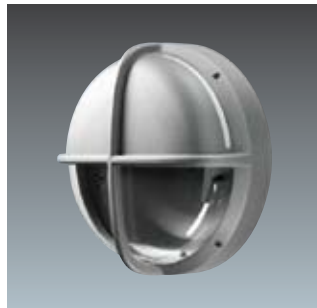
# Product features



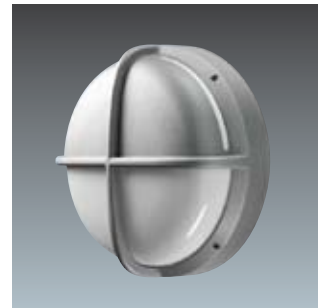
Small, bezel, silver grey, opal diffuser



Small, cross, anthracite, opal diffuser



Small, halo visor, silver grey, clear diffuser



Small, halo visor, silver grey, opal diffuser



Large, bezel, anthracite, opal diffuser



Large, cross, black, opal diffuser



Large, visor, anthracite, opal diffuser



Large, halo visor, black, opal diffuser

## Lamps

### Small

☛ 18W TC-DEL (FSQ) compact fluorescent. Cap: G24q-2

☛ 26W TC-TEL (FSM) compact fluorescent. Cap: GX24q-3

### Large

☛ 28-55W TC-DDEL (FSS) compact fluorescent. Cap: GR10

☛ 42W TC-TEL (FSM) compact fluorescent. Cap: GX24q-4

## Materials/Finish

Housing and decorative feature (cross, bezel and visor): die-cast aluminium

Diffusers: opal or clear polycarbonate

Reflector: aluminium

Gaskets: extruded silicone rubber sponge

Vandal proof screws, torx key supplied with every luminaire

## Installation/Mounting

Wall or ceiling (except 38W and 42W E3 versions) mounting with central BESA provision and four fixing points (2 horizontal holes to aid adjustment, additional holes for security or uneven surfaces). Two cable entries to rear or side (not for conduit use) into 3-way terminal block (4-way for E3 versions). Looping possible. Separate gear tray secures with two screws.

## Standards

Designed and manufactured to comply with EN 60598

Emergency versions with EN 60598 2. 22

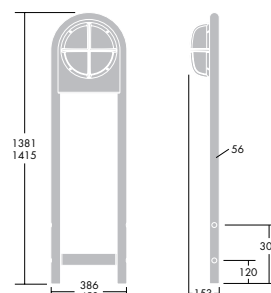
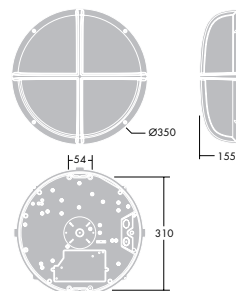
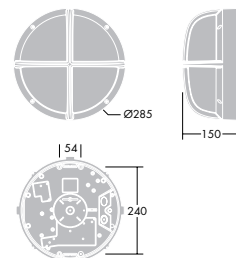
Ⓢ Class I electrical IK10

⚡ IP65 ♻️ CE

## Specification

Surface mounted bulkhead with die-cast black/silver grey/anthracite aluminium body and opal/clear polycarbonate diffuser. IP65. IK10/double wall design that will conceal cable from view. Round large/small with plain/cross/visor/halo visor. For compact fluorescent/metal halide lamps. With emergency/and photocell/lighting. As Thorn EyeKon.

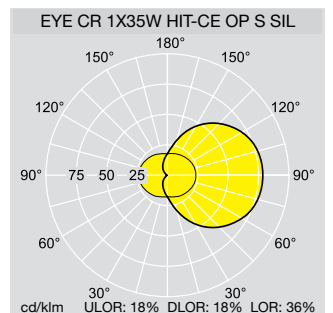
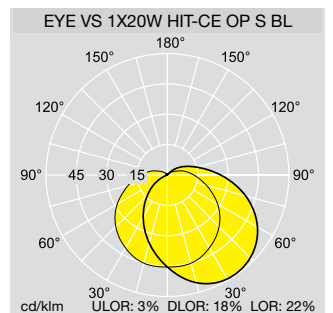
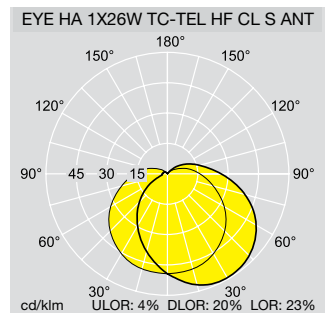
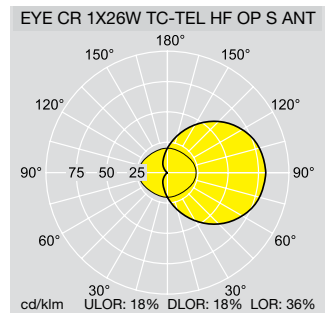
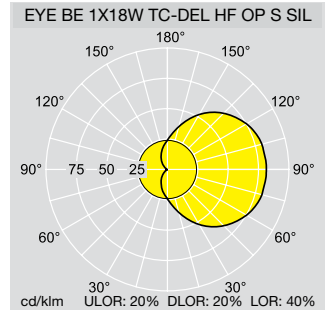
For more information visit the EyeKon microsite [www.thornlighting.com/eyeKon](http://www.thornlighting.com/eyeKon)



# Ordering Guides

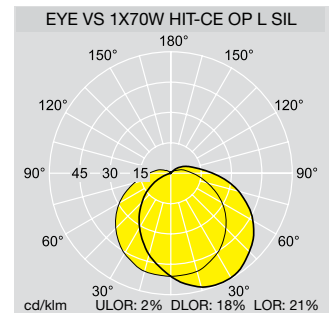
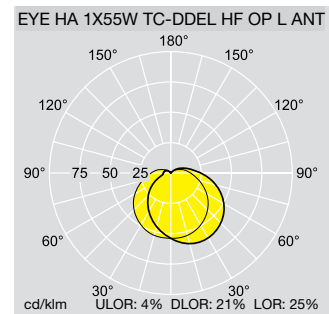
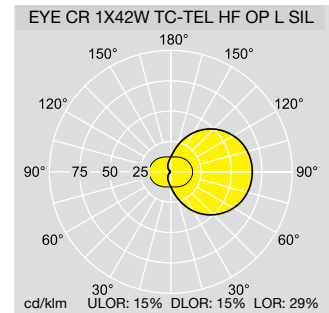
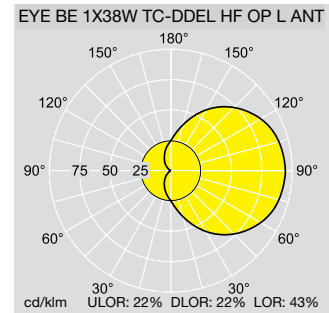
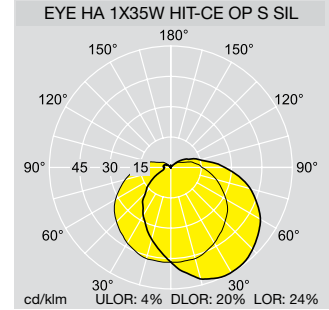
**Ordering Guide** Lamp (s) to be ordered separately

Description	Bezel	Icos code	Socket	Weight (Kg)	SAP Code		
					Anthracite	Black	Silver
<b>Small version</b>							
<b>Clear diffuser</b>							
EYE HA 1X18W TC-DEL HF CL S	HaloVisor	F5Q	GX24q-2	2.0	96206319	96206320	96206321
EYE HA 1X26W TC-TEL HF CL S	HaloVisor	F5M	GX24q-3	2.0	96206344	96206345	96206346
<b>Clear diffuser - Emergency versions</b>							
EYE HA 1X18W TC-DEL HF E3 CL S	HaloVisor	F5Q	GX24q-2	2.6	96206334	96206335	96206336
<b>Opal diffuser</b>							
EYE CR 1X18W TC-DEL HF OP S	Cross	F5Q	GX24q-2	2.0	96206322	96206323	96206324
EYE CR 1X26W TC-TEL HF OP S	Cross	F5M	GX24q-3	2.0	96206337	96206338	96206339
EYE CR 2X18W TC-DEL HF OP S	Cross	F5Q	GX24q-2	1.9	96206365	96206366	96206367
EYE BE 1X18W TC-DEL HF OP S	Bezel	F5Q	GX24q-2	1.8	96206325	96206326	96206327
EYE BE 1X26W TC-TEL HF OP S	Bezel	F5M	GX24q-3	1.7	96206340	96206342	96206343
EYE BE 2X18W TC-DEL HF OP S	Bezel	F5Q	GX24q-2	1.6	96207061	96206368	96206369
EYE HA 1X18W TC-DEL HF OP S	HaloVisor	F5Q	GX24q-2	2.0	96206328	96206329	96206330
EYE HA 1X26W TC-TEL HF OP S	HaloVisor	F5M	GX24q-3	2.0	96206341	96206953	96206954
EYE HA 2X18W TC-DEL HF OP S	HaloVisor	F5Q	GX24q-2	1.9	96206370	96206371	96206372
EYE VS 1X18W TC-DEL HF OP S	Visor	F5Q	GX24q-2	2.0	96206331	96206332	96206333
EYE VS 1X26W TC-TEL HF OP S	Visor	F5M	GX24q-3	2.0	96206347	96206348	96206349
EYE VS 2X18W TC-DEL HF OP S	Visor	F5Q	GX24q-2	1.9	96206373	96206374	96206375
<b>Opal diffuser - Emergency version</b>							
EYE CR 1X18W TC-DEL HF E3 OP S	Cross	F5Q	GX24q-2	2.6	96206307	96206308	96206309
EYE BE 1X18W TC-DEL HF E3 OP S	Bezel	F5Q	GX24q-2	2.4	96206310	96206311	96206312
EYE HA 1X18W TC-DEL HF E3 OP S	HaloVisor	F5Q	GX24q-2	2.6	96206313	96206314	96206315
EYE VS 1X18W TC-DEL HF E3 OP S	Visor	F5Q	GX24q-2	2.6	96206316	96206317	96206318
<b>Large Version</b>							
<b>Opal diffuser</b>							
EYE CR 1X28W TC-DDEL HF OP L	Cross	F5S	GR10q	2.6	96206473	96206474	96206475
EYE CR 1X38W TC-DDEL HF OP L	Cross	F5S	GR10q	2.6	96206545	96206546	96206547
EYE CR 1X42W TC-TEL HF OP L	Cross	F5M	GX24q-4	2.5	96206631	96206632	96206633
EYE CR 1X55W TC-DDEL HF OP L	Cross	F5S	GRY10q-3	2.5	96206655	96206656	96206657
EYE BE 1X28W TC-DDEL HF OP L	Bezel	F5S	GR10q	2.4	96206476	96206477	96206478
EYE BE 1X38W TC-DDEL HF OP L	Bezel	F5S	GR10q	2.4	96206548	96206549	96206550
EYE BE 1X42W TC-TEL HF OP L	Bezel	F5M	GX24q-4	2.3	96206634	96206635	96206636
EYE BE 1X55W TC-DDEL HF OP L	Bezel	F5S	GRY10q-3	2.3	96206658	96206659	96206660
EYE HA 1X28W TC-DDEL HF OP L	HaloVisor	F5S	GR10q	2.8	96206479	96206480	96206481
EYE HA 1X38W TC-DDEL HF OP L	HaloVisor	F5S	GR10q	2.8	96206551	96206552	96206553
EYE HA 1X55W TC-DDEL HF OP L	HaloVisor	F5S	GRY10q-3	2.7	96206661	96206662	96206663
EYE VS 1X28W TC-DDEL HF OP L	Visor	F5S	GR10q	2.8	96206482	96206483	96206484
EYE VS 1X38W TC-DDEL HF OP L	Visor	F5S	GR10q	2.8	96206554	96206555	96206556
EYE VS 1X42W TC-TEL HF OP L	Visor	F5M	GX24q-4	2.7	96206640	96206641	96206642
EYE VS 1X55W TC-DDEL HF OP L	Visor	F5S	GRY10q-3	2.7	96206664	96206665	96206666
<b>Large Version</b>							
<b>Opal diffuser - photocell versions</b>							
EYE CR 1X28W TC-DDEL P HF OP L	Cross	F5S	GR10q	2.6	96206461	96206462	96206463
EYE CR 1X38W TC-DDEL P HF OP L	Cross	F5S	GR10q	2.6	96206533	96206534	96206535
EYE CR 1X42W TC-TEL P HF OP L	Cross	F5M	GX24q-4	2.5	96206605	96206606	96206607
EYE CR 1X55W TC-DDEL P HF OP L	Cross	F5S	GRY10q-3	2.5	96206643	96206644	96206645
EYE BE 1X28W TC-DDEL P HF OP L	Bezel	F5S	GR10q	2.4	96206464	96206465	96206466



**Ordering Guide** Lamp (s) to be ordered separately

Description	Bezel	Ilcos code	Socket	Weight (Kg)	SAP Code		
					Anthracite	Black	Silver
<b>Large Version</b>							
<b>Opal diffuser - photocell versions</b>					<b>Anthracite</b>	<b>Black</b>	<b>Silver</b>
EYE BE 1X38W TC-DDEL P HF OP L	Bezel	FSS	GR10q	2.4	96206536	96206537	96206538
EYE BE 1X42W TC-TEL P HF OP L	Bezel	FSM	GX24q-4	2.3	96206608	96206609	96206610
EYE BE 1X55W TC-DDEL P HF OP L	Bezel	FSS	GRY10q-3	2.3	96206646	96206647	96206648
EYE HA 1X28W TC-DDEL P HF OP L	HaloVisor	FSS	GR10q	2.8	96206467	96206468	96206469
EYE HA 1X38W TC-DDEL P HF OP L	HaloVisor	FSS	GR10q	2.8	96206539	96206540	96206541
EYE HA 1X42W TC-TEL P HF OP L	HaloVisor	FSM	GX24q-4	2.7	96206611	96206612	96206613
EYE HA 1X55W TC-DDEL P HF OP L	HaloVisor	FSS	GRY10q-3	2.7	96206649	96206650	96206651
EYE VS 1X28W TC-DDEL P HF OP L	Visor	FSS	GR10q	2.8	96206470	96206471	96206472
EYE VS 1X38W TC-DDEL P HF OP L	Visor	FSS	GR10q	2.8	96206542	96206543	96206544
EYE VS 1X42W TC-TEL P HF OP L	Visor	FSM	GX24q-4	2.7	96206614	96206615	96206616
EYE VS 1X55W TC-DDEL P HF OP L	Visor	FSS	GRY10q-3	2.7	96206652	96206653	96206654
<b>Opal diffuser - SelfTest emergency versions</b>					<b>Anthracite</b>	<b>Black</b>	<b>Silver</b>
EYE CR 1X28W TC-DDEL HF E3TX OP L	Cross	FSS	GR10q	3.3	96206449	96206450	96206451
EYE CR 1X38W TC-DDEL HF E3TX OP L	Cross	FSS	GR10q	3.6	96206521	96206522	96206523
EYE CR 1X42W TC-TEL HF E3TX OP L	Cross	FSM	GX24q-4	3.6	96206593	96206594	96206595
EYE BE 1X28W TC-DDEL HF E3TX OP L	Bezel	FSS	GR10q	3.1	96206452	96206453	96206454
EYE BE 1X38W TC-DDEL HF E3TX OP L	Bezel	FSS	GR10q	3.4	96206524	96206525	96206526
EYE BE 1X42W TC-TEL HF E3TX OP L	Bezel	FSM	GX24q-4	3.4	96206596	96206597	96206598
EYE HA 1X28W TC-DDEL HF E3TX OP L	HaloVisor	FSS	GR10q	3.5	96206455	96206456	96206457
EYE HA 1X38W TC-DDEL HF E3TX OP L	HaloVisor	FSS	GR10q	3.8	96206527	96206528	96206529
EYE HA 1X42W TC-TEL HF E3TX OP L	HaloVisor	FSM	GX24q-4	3.8	96206599	96206600	96206601
EYE VS 1X28W TC-DDEL HF E3TX OP L	Visor	FSS	GR10q	3.5	96206458	96206459	96206460
EYE VS 1X38W TC-DDEL HF E3TX OP L	Visor	FSS	GR10q	3.8	96206530	96206531	96206532
EYE VS 1X42W TC-TEL HF E3TX OP L	Visor	FSM	GX24q-4	3.8	96206602	96206603	96206604
<b>Opal diffuser - SelfTest emergency with photocell</b>					<b>Anthracite</b>	<b>Black</b>	<b>Silver</b>
EYE CR 1X28W TC-DDEL P HF E3TX OP L	Cross	FSS	GR10q	3.3	96206437	96206438	96206439
EYE CR 1X38W TC-DDEL P HF E3TX OP L	Cross	FSS	GR10q	3.6	96206509	96206510	96206511
EYE CR 1X42W TC-TEL P HF E3TX OP L	Cross	FSM	GX24q-4	3.6	96206581	96206582	96206583
EYE BE 1X28W TC-DDEL P HF E3TX OP L	Bezel	FSS	GR10q	3.1	96206440	96206441	96206442
EYE BE 1X38W TC-DDEL P HF E3TX OP L	Bezel	FSS	GR10q	3.4	96206512	96206513	96206514
EYE BE 1X42W TC-TEL P HF E3TX OP L	Bezel	FSM	GX24q-4	3.4	96206584	96206585	96206586
EYE HA 1X28W TC-DDEL P HF E3TX OP L	HaloVisor	FSS	GR10q	3.5	96206443	96206444	96206445
EYE HA 1X38W TC-DDEL P HF E3TX OP L	HaloVisor	FSS	GR10q	3.8	96206515	96206516	96206517
EYE HA 1X42W TC-TEL P HF E3TX OP L	HaloVisor	FSM	GX24q-4	3.8	96206587	96206588	96206589
EYE VS 1X28W TC-DDEL P HF E3TX OP L	Visor	FSS	GR10q	3.5	96206446	96206447	96206448
EYE VS 1X38W TC-DDEL P HF E3TX OP L	Visor	FSS	GR10q	3.8	96206518	96206519	96206520
EYE VS 1X42W TC-TEL P HF E3TX OP L	Visor	FSM	GX24q-4	3.8	96206590	96206591	96206592
<b>Bollards</b>					<b>Anthracite</b>	<b>Black</b>	<b>Silver</b>
EYE BOLLARD LARGE					96207081	96207079	96207082
EYE BOLLARD SMALL					96207085	96207083	96207086



# THORN

Lighting people and places

## Thorn Lighting Limited

### UK

Silver Screens, Elstree Way, Borehamwood,  
Hertfordshire, WD6 1FE

### UK Sales desk -

#### Orders/Stock Enquiries

Tel: 0844 855 4810

Fax: 0844 855 4811

### Ireland

Thorn Lighting (Ireland) Limited  
Century House  
Harolds Cross Road  
Dublin 6W

Tel: (353) 1 4922 877

Fax: (353) 1 4922 724

E-mail: [dublinsales@thornlighting.com](mailto:dublinsales@thornlighting.com)

### Thorn Olympics Sports Lighting Team

Tel: 07785 251 438

E-mail: [olympics.team@thornlighting.com](mailto:olympics.team@thornlighting.com)

### Spare Parts

Tel: 0191 301 3131

Fax: 0191 301 3038

E-mail: [spares@thornlighting.com](mailto:spares@thornlighting.com)

### Technical Support

Tel: 0844 855 4812

Fax: 020 8732 9882

E-mail: [technical@thornlighting.com](mailto:technical@thornlighting.com)

### Brochureline Answering Service

Brochures on specific products/ranges

Tel: 020 8732 9898

Fax: 020 8732 9899

E-mail: [brochures.uk@thornlighting.com](mailto:brochures.uk@thornlighting.com)

**[www.thornlighting.co.uk](http://www.thornlighting.co.uk)**

Thorn Lighting is constantly developing and improving its products. All descriptions, illustrations, drawings and specifications in this publication present only general particulars and shall not form part of any contract. The right is reserved to change specifications without prior notification or public announcement. All goods supplied by the company are supplied subject to the company's General Conditions of Sale, a copy of which is available on request. All measurements are in millimetres and weights in kilograms unless otherwise stated.

**Publication No: 455 (GB) Publication Date: 08/09**



Member of The Lighting  
Industry Federation



ISO 9001:2000  
Reg: 2916/0  
Manufacturing & Distribution