

Technical Information



Design

BSEN40, PD6547: 2004+A1: 2009 (No Sign)  
 Load Class B  
 Deflection Class 3

Head load - See Table

Finish

Galvanised to BSEN 1461:2022

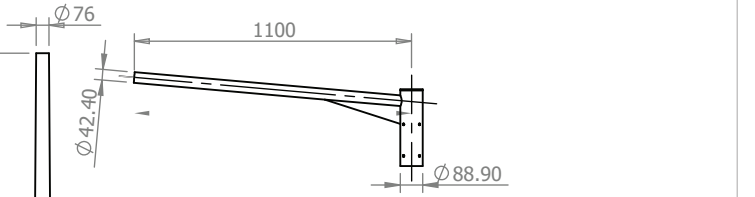
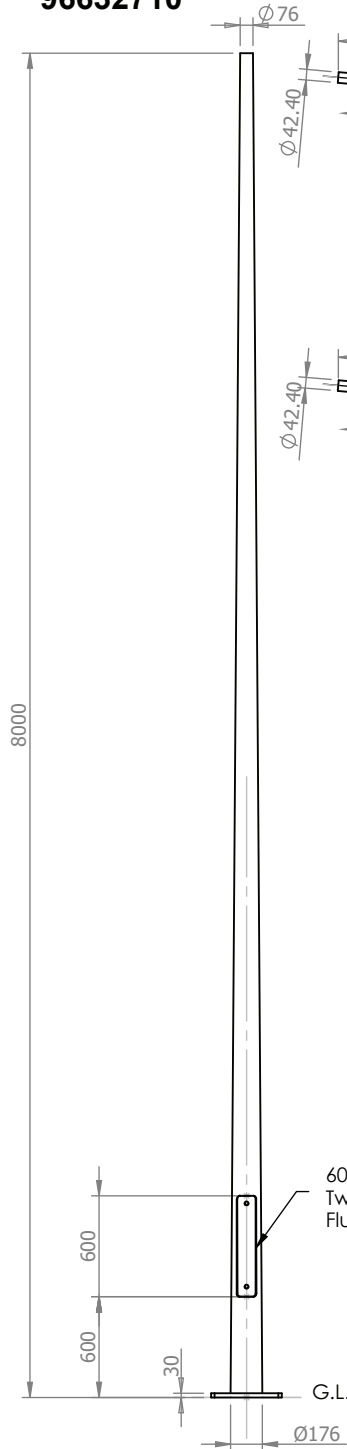
Welding

In accordance with BSEN1011  
 Procedures to BSEN ISO 15614-1:2017  
 Welders qualified to BSEN ISO 9606-1:2017

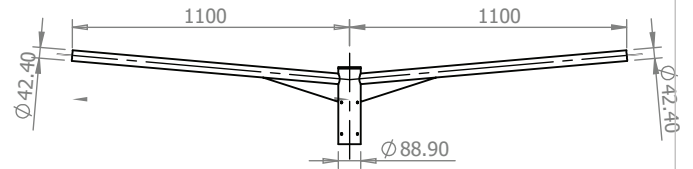
\* Maximum design head load based on wind loading region with orientation of bracket/ luminaire(s) being on the same plane as door

Approximate Column Weight: 137.53kg

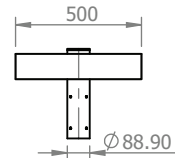
**96632710**



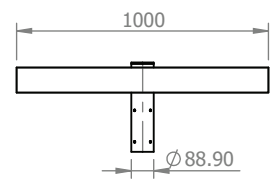
**96632718 - Single Arm Bracket**  
 Approx Weight: 7.15kg



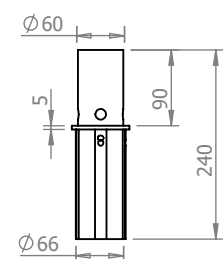
**96632719 - Twin Arm Bracket**  
 Approx Weight: 11.19kg



**96632720 - Single Flood Light Bracket**  
 Approx Weight: 6.22kg

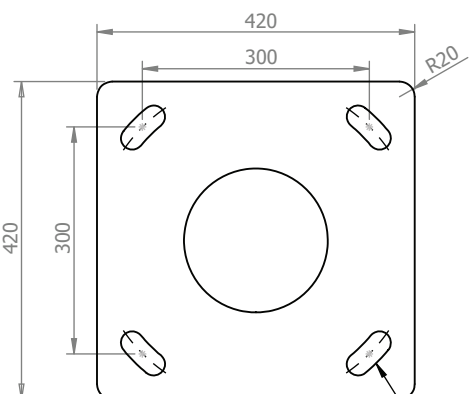


**96632721 - Double/Quad Flood Light Bracket**  
 Approx Weight: 9.62kg



**96633562 - 60mm Post Top Adaptor**  
 Approx Weight: 1kg

Maximum Loading Including Bracket		
Wind Loading Region	Terrain Category	Weight/Area
Extra Light	I	100kg/0.96m <sup>2</sup>
	II	110kg/1.2m <sup>2</sup>
Light	I	85kg/0.80m <sup>2</sup>
	II	100kg/1.05m <sup>2</sup>
Medium	I	75kg/0.71m <sup>2</sup>
	II	90kg/0.95m <sup>2</sup>
Heavy	I	65kg/0.63m <sup>2</sup>
	II	80kg/0.85m <sup>2</sup>
Extra Heavy	I	50kg/0.42m <sup>2</sup>
	II	60kg/0.61m <sup>2</sup>



Flange Plate  
 Scale 1:10  
 4No. 30 x 70 slots to suit M24 Fixings




Title  
 8 Metre Tapered/Conical Flange Plated Post Top Column

Drg No. 49380-0  
 Scale:1:45  
 Sheet 1 of 1

Notes  
 All dimensions in millimetres unless stated otherwise.  
 When Multiple views are shown 3rd Angle Projection is assumed.