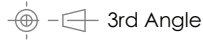


Technical Information



Design

BSEN40, PD6547: 2004+A1: 2009 (No Sign)
 Load Class B
 Deflection Class 3

Head load - See Table

Finish

Galvanised to BSEN 1461:2022

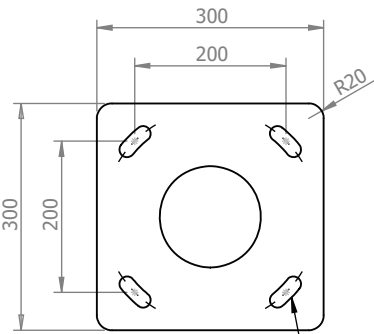
Welding

In accordance with BSEN1011
 Procedures to BSEN ISO 15614-1:2017
 Welders qualified to BSEN ISO 9606-1:2017

* Maximum design head load based on wind loading region with orientation of bracket/ luminaire(s) being on the same plane as door

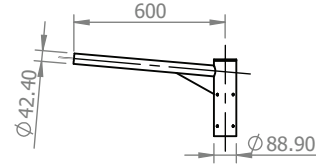
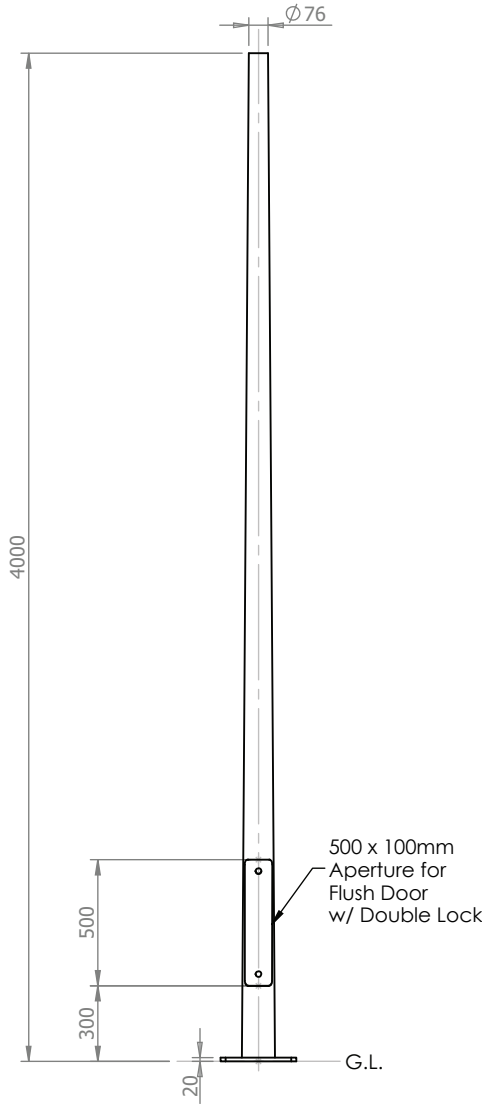
Approximate Column Weight: 41kg

Maximum Loading Including Bracket		
Wind Loading Region	Terrain Category	Weight/Area
Extra Light	II	115kg/0.98m ²
	III	125kg/1.12m ²
Light	II	105kg/0.86m ²
	III	115kg/0.98m ²
Medium	II	95kg/0.80m ²
	III	105kg/0.89m ²
Heavy	II	85kg/0.74m ²
	III	95kg/0.83m ²
Extra Heavy	II	70kg/0.59m ²
	III	80kg/0.66m ²

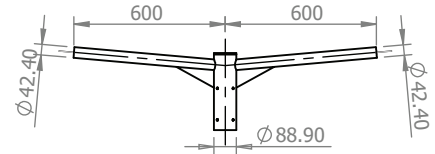


Flange Plate Scale 1:10
 4No. 20 x 50 slots to suit M16 Fixings

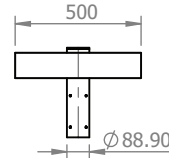
96632704



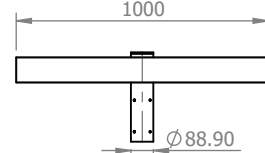
96632716 - Single Arm Bracket
 Approx Weight: 5.23kg



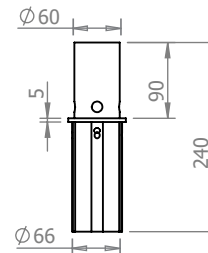
96632717 - Twin Arm Bracket
 Approx Weight: 7.36kg



96632720 - Single Flood Light Bracket
 Approx Weight: 6.22kg



96632721 - Double/Quad Flood Light Bracket
 Approx Weight: 9.62kg



96633562 - 60mm Post Top Adaptor
 Approx Weight: 1kg



Title		
4 Metre Tapered/Conical Flange Plated Post Top Column		

Title
 4 Metre Tapered/Conical Flange Plated Post Top Column

Drg No. 49369-0

Scale:1:30
 Sheet 1 of 1

Notes
 All dimensions in millimetres unless stated otherwise.
 When Multiple views are shown 3rd Angle Projection is assumed.