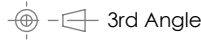


Technical Information



Design

BSEN40, PD6547: 2004+A1: 2009 (No sign)

Load class B

Deflection class 3

Head load- See Table

Finish

Galvanised to BSEN 1461:2009

Welding

In accordance with BSEN1011

Procedures to BSEN ISO 15614-1:2017

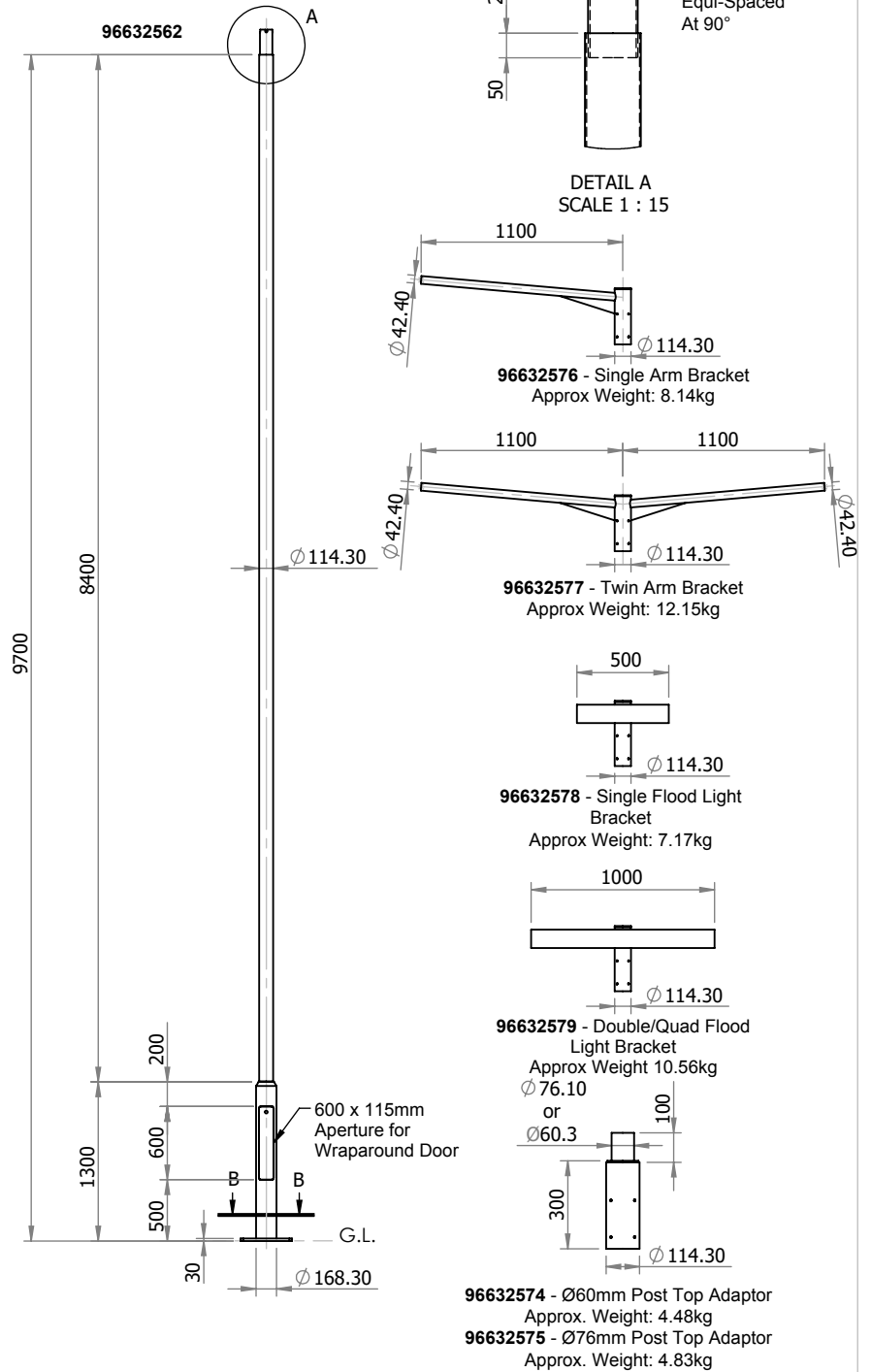
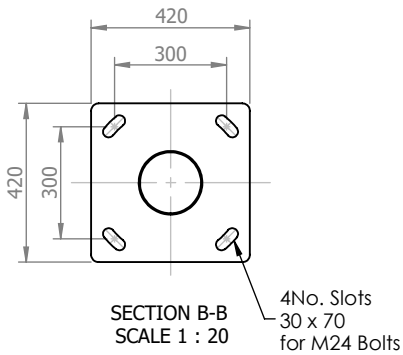
Welders qualified to BSEN ISO 9606-1:2017

* Maximum design head load based on wind loading region with orientation of bracket/luminaire(s) being on same plane as door

Approximate Column Weight: 148.51kg

Maximum Loading including Bracket

Wind Loading Region	Terrain Category	Weight/Area
Extra Light	I	50kg/0.54m ²
	II	65kg/0.65m ²
Light	I	45kg/0.44m ²
	II	60kg/0.56m ²
Medium	I	36kg/0.38m ²
	II	55kg/0.51m ²
Heavy	I	30kg/0.32m ²
	II	50kg/0.45m ²
Extra Heavy	I	20kg/0.18m ²
	II	30kg/0.28m ²



THORN

LIGHTING

Notes

All dimensions in millimetres unless stated otherwise.

When Multiple views are shown 3rd Angle Projection is assumed.

Title

10 Metre Stepped/Tubular Flange Plated Post Top Column

Drg No. 35926-1

Scale:1:60

Sheet 1 of 1