

Technical Information



Design

BSEN40, PD6547: 2004+A1: 2009 (No sign)

Load class B

Deflection class 3

Head load See Table

Finish

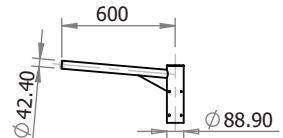
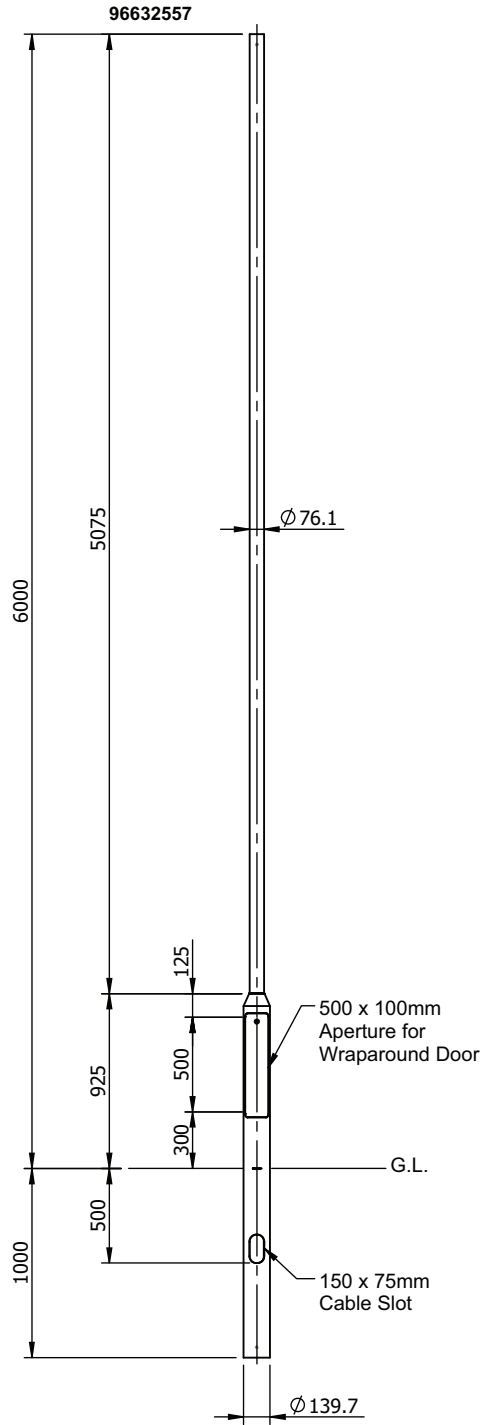
Galvanised to BSEN 1461:2022

Welding

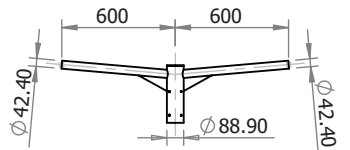
In accordance with BSEN1011
 Procedures to BSEN ISO 15614-1:2017
 Welders qualified to BSEN ISO 9606-1:2017

* Maximum design head load based on wind loading region with orientation of bracket/ luminaire(s) being on same plane as door
 Approximate Column Weight: 46.27kg

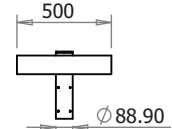
Maximum Loading including Bracket		
Wind Loading Region	Terrain Category	Weight/Area
Extra Light	II	55kg/0.46m ²
	III	60kg/0.61m ²
Light	II	40kg/0.40m ²
	III	60kg/0.51m ²
Medium	II	38kg/0.36m ²
	III	50kg/0.47m ²
Heavy	II	35kg/0.32m ²
	III	45kg/0.42m ²
Extra Heavy	II	30kg/0.24m ²
	III	34kg/0.31m ²



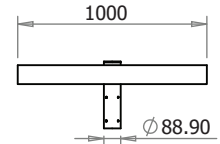
96632566 - Single Arm Bracket
 Approx Weight: 5.23kg



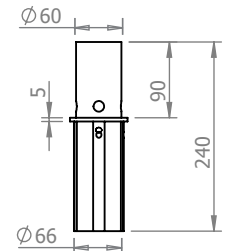
96632567 - Twin Arm Bracket
 Approx Weight: 7.36kg



96632568 - Single Flood Light Bracket
 Approx Weight: 6.22kg



96632569 - Double/Quad Flood Light Bracket
 Approx Weight: 9.62kg



96633563 - 60mm Post Top Adaptor
 Approx Weight: 1kg



Notes

All dimensions in millimetres unless stated otherwise.

When Multiple views are shown 3rd Angle Projection is assumed.

Title

6 Metre Stepped/Tubular Root Mounted Post Top Column

Drq No. 35921-5

Scale:1:40

Sheet 1 of 1